

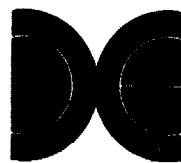
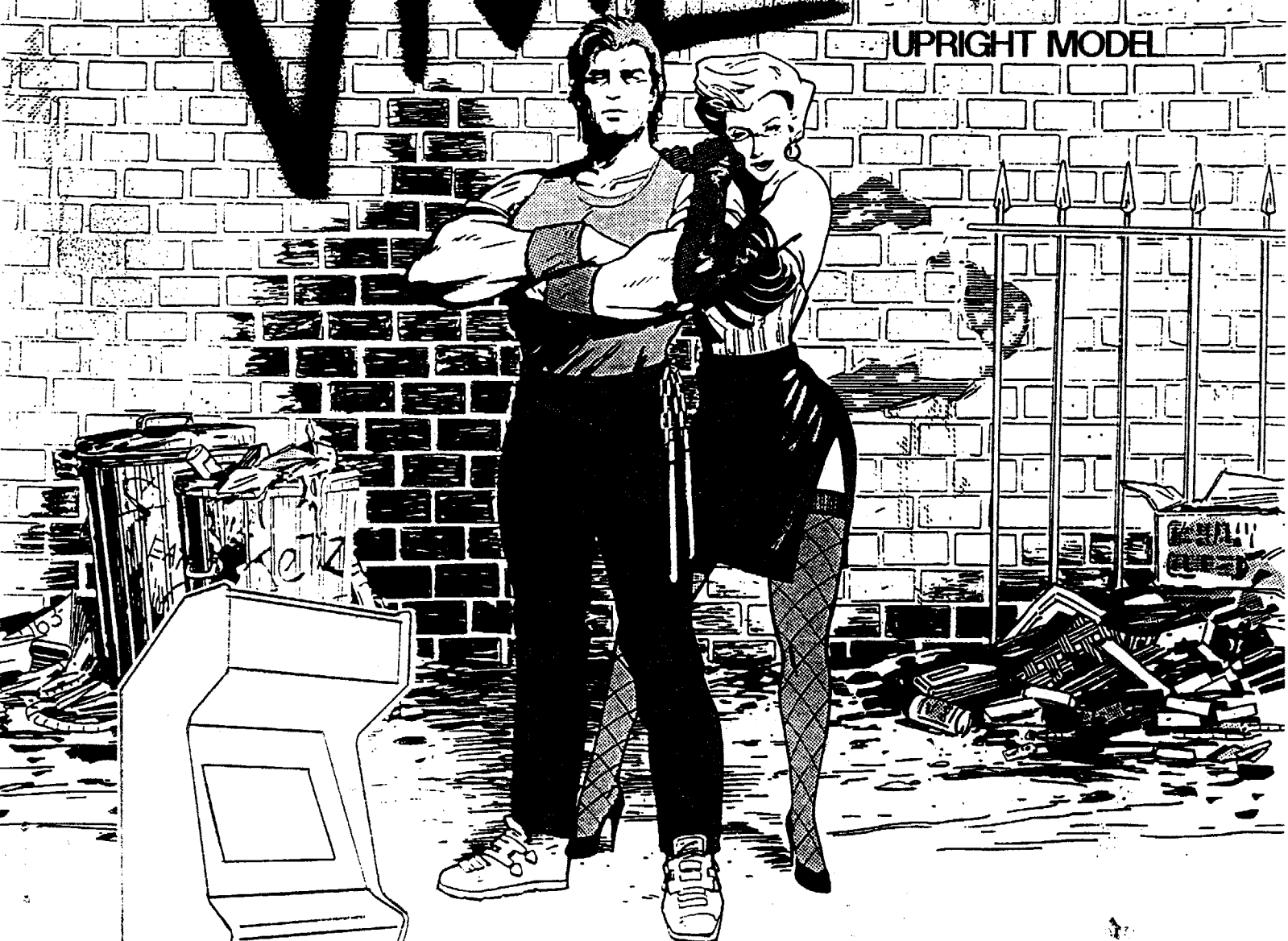
SERVICE & INSTALLATION MANUAL

437

PART NUMBER: 780-0084-00

TIGLIANTE

UPRIGHT MODEL



DATA EAST USA, INC.

470 NEEDLES DRIVE
SAN JOSE, CA 95112
TELEPHONE: (408) 286-7074

FCC WARNING

This equipment generates and uses radio frequency energy and if not installed and used properly, ie; in strict accordance with this instructions manual, may cause harmful interference to radio communications. This equipment has been tested and found to comply with the limits for a Class A computing device pursuant to Subpart J of Part 15 of the FCC rules, which are designed to provide reasonable protection against such interference when the equipment is operated in a commercial environment.

Operation of this equipment in a residential environment is likely to cause interference in which case the user, at his own expense, will be required to take whatever measures are necessary to correct the interference.

FBI WARNING

Federal law provides severe civil and criminal penalties for the unauthorized reproduction, distribution, or exhibition of copyrighted audio-visual works and video games. The Federal Bureau of Investigation investigates allegations of criminal copyright infringement.

COPYRIGHT NOTICE

Vigilante™ is Copyright 1987 Irem Corporation, licensed and sold exclusively in the United States of America and Canada by Data East USA, Inc. All rights reserved.

ENVIRONMENTAL DATA

This product is intended for use indoor use only, power requirements are 105-125 volts AC, 50-60 hz, and requires a 3 wire grounded outlet.

SERVICE PROCEDURES

To obtain replacement parts and technical service, contact the authorized Data East Distributor in your area. If you require referral or further technical assistance, you may contact Data East's Customer Service department during the hours of 8:00 am to 5:00 pm Pacific Time at (408) 286-7074.



UPRIGHT MODEL
SERVICE & OPERATION MANUAL
TABLE OF CONTENTS

1. GENERAL INFORMATION	
A. Installation and Set-Up.....	1
2. GAME INFORMATION	
A. Game Options.....	2
B. Power-Up Self-Test.....	3
C. System Adjustments.....	4
D. Main Harness Diagram.....	5
3. REPLACEMENT PARTS LIST.....	6
4. PCB SCHEMATIC DIAGRAMS.....	7

© 1987 DATA EAST USA, INC.
470 NEEDLES DRIVE
SAN JOSE, CA. 95112
(408) 286-7074

FIRST PRINTING
JANUARY 1988

PN: 780-0084-00

1. GENERAL INFORMATION

A. Installation and Set-Up.

NOTE: There are two models of the Vigilante™ upright video game. The first release version had a detachable control panel box and can be identified by a curved Marquee Plex. The second release utilizes a conventional cabinet that has the control panel mounted to the cabinet. If you have a second release game, skip to step 4 below.

1. Remove the shipping screws to remove the Rear Access Door using the key supplied. The 2 bolts used to hold the Control Panel to the rear access door during shipment are also used to mount the control panel to the cabinet. The two remaining bolts required can be found threaded into T-nuts in the control panel. Remove the Control Panel from the back door at this time.

2. Locate the keys in the package on the front of the cabinet, open the Coin Door. The control panel has two (2) retaining clamps that hold down the hinged section of the panel. Release the clamps at this time. Position the control panel on the front of the cabinet. Raise up the hinged section of the panel and reach inside the cabinet to start threading in the four mounting bolts. Thread in the bolts until they are finger tight. Using a ratchet with a 7/16" socket, tighten the mounting bolts. These may be easier to reach from the rear of the cabinet.

3. Plug the 12 pin Molex connector from the control panel into the Main Harness. Close the Control Panel and secure with the clamps.

4. Check the Main Harness for loose or unplugged connectors, and check for secure mounting of the monitor, power supply, and game pcb. Stabilize the cabinet using the leg levelers in the floor of the cabinet to prevent the game from rocking.

5. The selectable options have been pre-set at the factory for optimum player appeal, however, refer to Chapter 2, Section A; Dip Switch Options in this manual to set the game up for special requirements.

6. Remove the power cord from the inside of the cabinet and insert the strain relief plate into the slot at the bottom of the rear access door opening. Plug the AC cord into a grounded 117 VAC outlet and flip the power switch to the ON position. Allow 2 to 3 minutes for the monitor to warm up and check for proper demonstration mode video on the screen. Insert the proper coinage into a coin slot and start a game. Check for proper operation of all joystick controls and switches.

2. GAME INFORMATION

A. Game Options.

The game options can be changed via 2 banks of dip-switches on the game PCB set. Be certain to remove power to the game when changing settings.

DIP SWITCH 1:

ITEM	ACTION	1	2	3	4	5	6	7	8
NUMBER OF FIGHTERS	THREE (3):	OFF	OFF						
	TWO (2):	ON	OFF						
	FOUR (4):	OFF	ON						
	FIVE (5):	ON	ON						
DIFFICULTY	NORMAL:			OFF					
	HARD:			ON					
DECREASE OF ENERGY	NORMAL:				OFF				
	FAST:				ON				
COIN MODE 2	1 COIN = 1 CREDIT:					OFF	OFF		
	2 COIN = 1 CREDIT:					ON	OFF		
	3 COIN = 1 CREDIT:					OFF	ON		
	5 COIN = 1 CREDIT:					ON	ON		
	1 COIN = 2 CREDIT:							OFF	OFF
	1 COIN = 3 CREDIT:							ON	ON
	1 COIN = 5 CREDIT:							OFF	ON
	1 COIN = 6 CREDIT:							ON	ON
COIN MODE 1	1 COIN = 1 CREDIT:					OFF	OFF	OFF	OFF
	2 COIN = 1 CREDIT:					ON	OFF	OFF	OFF
	3 COIN = 1 CREDIT:					OFF	ON	OFF	OFF
	4 COIN = 1 CREDIT:					ON	ON	OFF	OFF
	5 COIN = 1 CREDIT:					OFF	OFF	ON	OFF
	6 COIN = 1 CREDIT:					ON	OFF	ON	OFF
	1 COIN = 2 CREDIT:					OFF	ON	ON	OFF
	1 COIN = 3 CREDIT:					ON	ON	ON	OFF
	1 COIN = 4 CREDIT:					OFF	OFF	OFF	ON
	1 COIN = 5 CREDIT:					ON	OFF	OFF	ON
	1 COIN = 6 CREDIT:					OFF	ON	OFF	ON
	2 COIN = 3 CREDIT:					ON	ON	OFF	ON
	3 COIN = 2 CREDIT:					OFF	OFF	ON	ON
	5 COIN = 3 CREDIT:					ON	OFF	ON	ON
	8 COIN = 3 CREDIT:					OFF	ON	ON	ON
FREE PLAY:					ON	ON	ON	ON	

DIP SWITCH 2:

ITEM	ACTION	1	2	3	4	5	6	7	8
FLIP PICTURE	NO: YES:	OFF ON							
CABINET TYPE	TABLE: UPRIGHT:	OFF ON							
COIN MODE	MODE 1: MODE 2:	OFF ON							
SOUND IN DEMO MODE	YES: NO:	OFF ON							
BUY-IN MODE	YES: NO:	OFF ON							
DEMO FREEZE MODE	NO:	OFF							
2P=STOP 1P=CONTINUE	YES:	ON							
NO DEATH MODE	NO: YES:	OFF ON							
ALWAYS KEEP SWITCH 8 OFF		OFF							

NOTE: For Coin 1 and Coin 2 = same value, use COIN MODE 1. For Coin 1 and Coin 2 = different value, use COIN MODE 2.

B. Power-Up Self Test.

When power is turned on, the following test is conducted automatically:

1. RAM TEST ;tests system RAMs for read and write capability.
2. ROM TEST ;tests system ROMs for valid data.

The RAM test causes various video patterns to appear on the screen for several seconds, and then displays results of RAM and ROM test.

If a RAM fails the test, the screen will display an error message indicating the defective device.

If a ROM fails the test, the screen will display an error message indicating the defective device.

C. System Adjustments.

The Volume Control, Coin Counter, and Service Switch are located on the Service Panel. The Service Panel is located inside the Coin Door, mounted on the wall of the cabinet on the left side.

The Coin Counter increments once for every coin dropped through either coin entry slots.

The Volume Control is used to adjust the overall loudness of the game sounds. NOTE: The volume control potentiometer on the Main pcb is pre-set to mid-range at the factory and should not be adjusted.

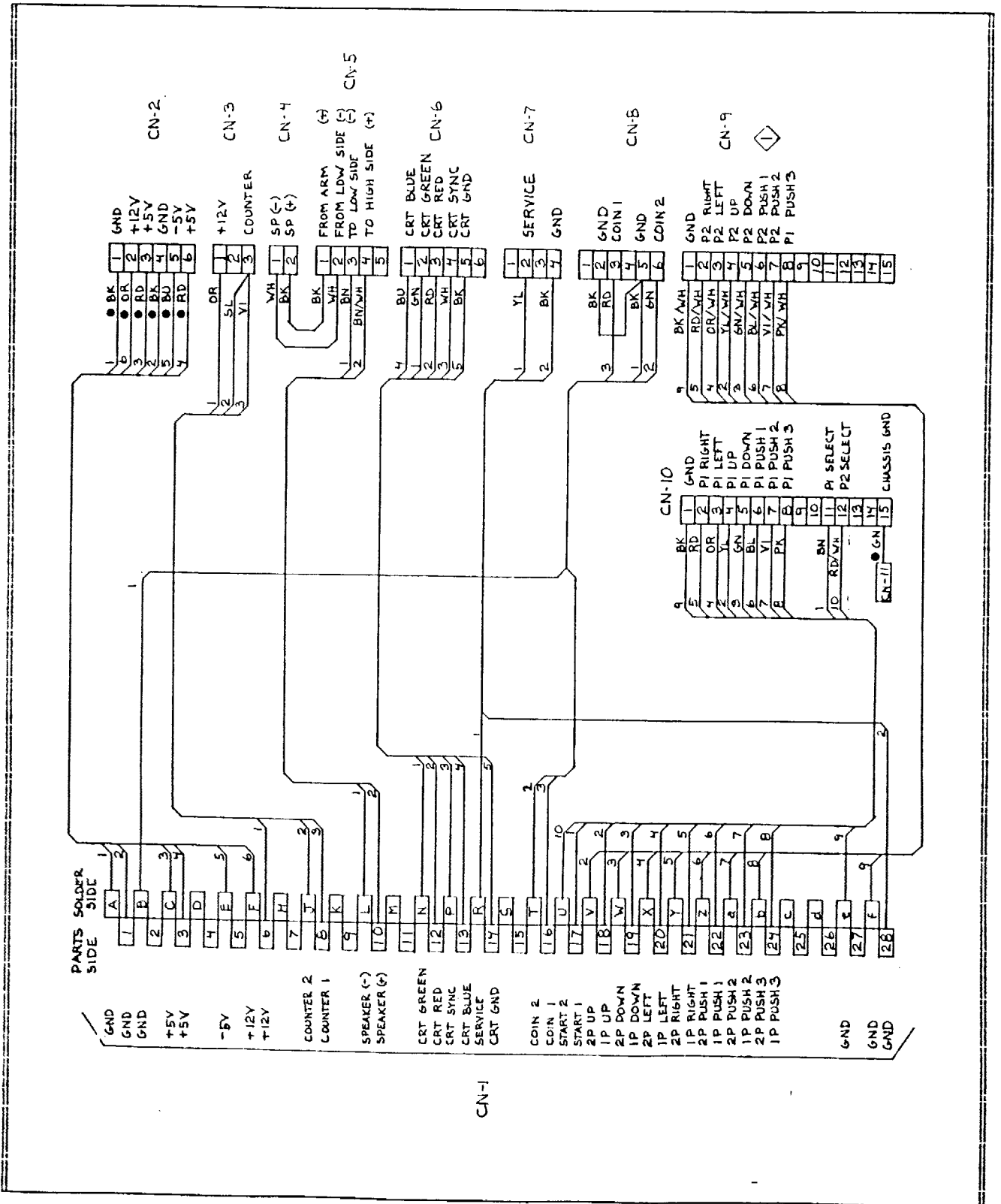
The Service Switch can be used to add credits to the game without incrementing the Coin Counter.

The fuses for the AC power line and the 12 volts for the Coin Door lamps are located on the Switch Bracket of the Power Supply assembly as is the ON/OFF switch. The fuse holders are labeled on the Switch Bracket as to the proper fuse ratings.

The +5 vdc adjustment level control is on the Power Supply's Switching Regulator is pre-set at the factory. In the event that an adjustment is required, measure the +5 volt level present at the game logic pcb with a Digital Multi-Meter while adjusting the output level of the Switching Regulator. The voltage must measure between +4.90 vdc to 5.10 vdc at the game logic pcb for proper operation.

WARNING: DANGEROUS VOLTAGE LEVELS ARE PRESENT IN AND AROUND THE MONITOR AND POWER SUPPLY ASSEMBLY. ADJUSTMENTS AND REPAIRS SHOULD BE ATTEMPTED ONLY BY QUALIFIED ELECTRONIC TECHNICIANS.

D. Wiring Diagram.



3. REPLACEMENT PARTS LIST

FINAL ASSEMBLY

CABINET, EMPTY, 1US30, GREY	365-0012-00*
CABINET, EMPTY, 1US25, GREY	365-0010-00
CONTROL PANEL ASSY., VIGILANTE	510-0127-00
COIN DOOR, COIN CONTROL 2 SLOT, WIDE	510-0127-00*
COIN DOOR ASSY., COIN CONTROL	510-0004-00
MONITOR ASSY., UNIVERSAL H/V	510-0120-00
POWER SUPPLY ASSY., 11AMP	510-0002-01
PCB SET, VIGILANTE	510-0124-00
RETAINER, PLEX, MONITOR	535-0073-00*
PLEX, CLEAR, DISPLAY 23.75 X 23.75	660-0001-01
UNDERLAY CARD, VIGILANTE	810-0028-00
LABEL, INSTR. VIGILANTE 'A'	406-0088-01
LABEL, INSTR. VIGILANTE 'B'	406-0088-02
DECAL, SIDE, VIGILANTE	820-0045-00
PLEX, MARQUEE, VIGILANTE	830-0036-00
RETAINER, PLEX, MARQUEE, CURVED	535-0078-00*
RETAINER, PLEX, MARQUEE	535-0009-00
SPEAKER, 6 X 9" OVAL	031-0006-00
HARNESS, MAIN, JAMMA STD. U/R	036-0159-00

CONTROL PANEL

CONTROL PANEL, BARE	535-0083-00
OVERLAY, CTRL PNL, VIGILANTE	800-0031-00
PUSHBUTTON, BLACK	350-0001-00
PUSHBUTTON, YELLOW	350-0001-04
PUSHBUTTON, BLUE	350-0001-06
HARNESS, CTRL PNL, 1P/2P, 2S.	036-0115-01
JOYSTICK, MONROE 4/8 WAY	450-0014-01

MISCELLANEOUS PARTS

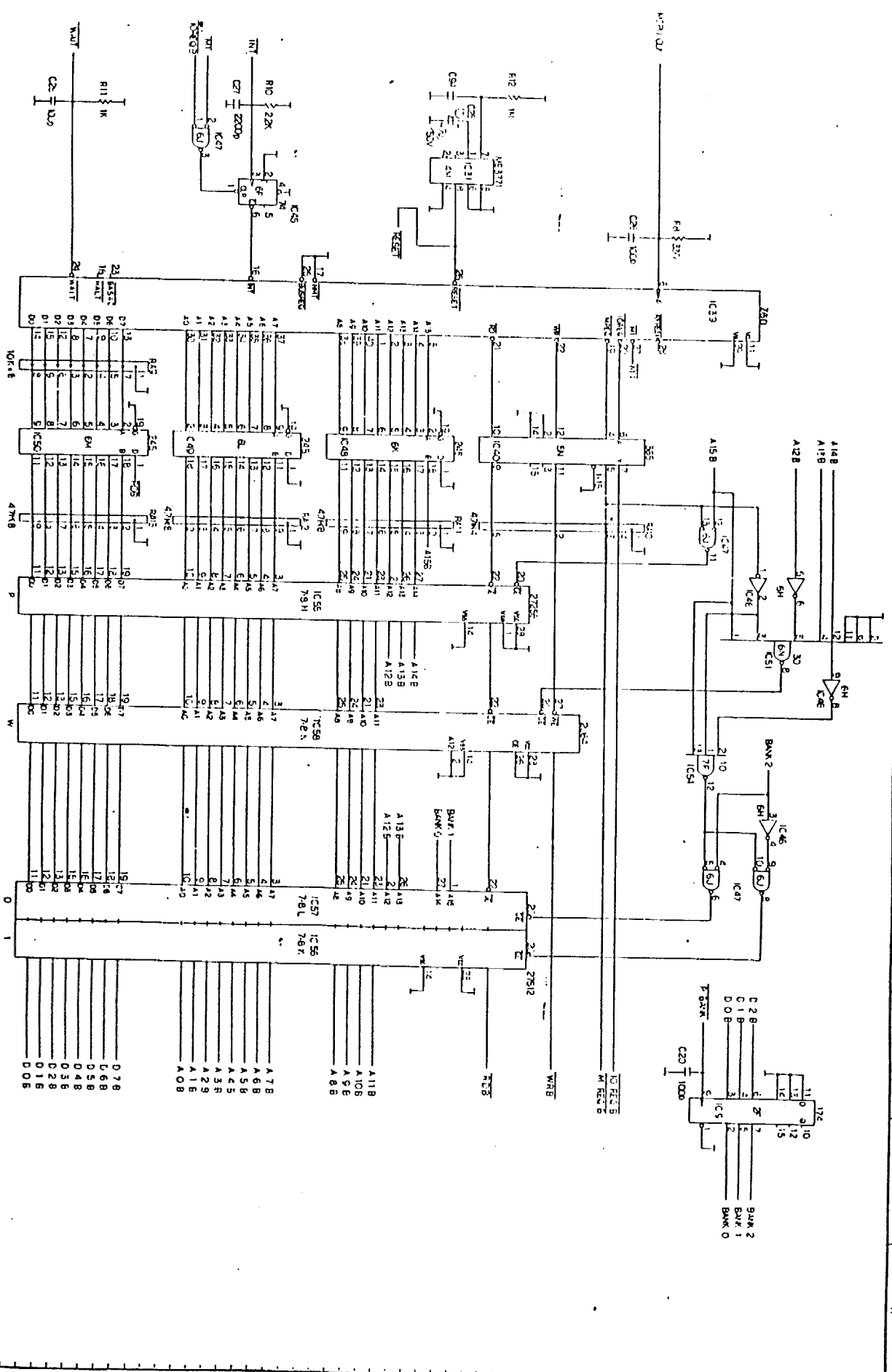
REGULATOR, 5V @ 11 A & 12V @ 1 A	001-0012-00
ISOLATION TRANSFORMER	010-0001-00
NOISE FILTER	150-0004-00
SWITCH BRACKET W/FUSEHOLDERS	515-0004-00
HARNESS, DC OUT, 11A	036-0031-02
CASHBOX, 3 SLOT, METAL	535-0076-00*
CASHBOX BRACKET, LOCKING	535-0077-00*
CASHBOX, PLASTIC	545-0004-00
FIXTURE, LAMP, DUAL	170-0002-00
LAMP, 40 WATT, INCANDESCENT	165-0004-01
LAMP, 14 VDC .19 AMP WEDGE, #161	165-0009-00
SERVICE PANEL ASSY.	515-0029-00
COIN COUNTER, 12 VOLT	090-0002-00
POT, 50 Ω 12.5W, 1/8" SHAFT	123-0009-12
POT, 100 Ω 4W 1/4" SHAFT (replaces above)	123-0008-11
SWITCH, PUSHBUTTON, MOM.	180-0022-00

* = FIRST RELEASE VERSION ONLY

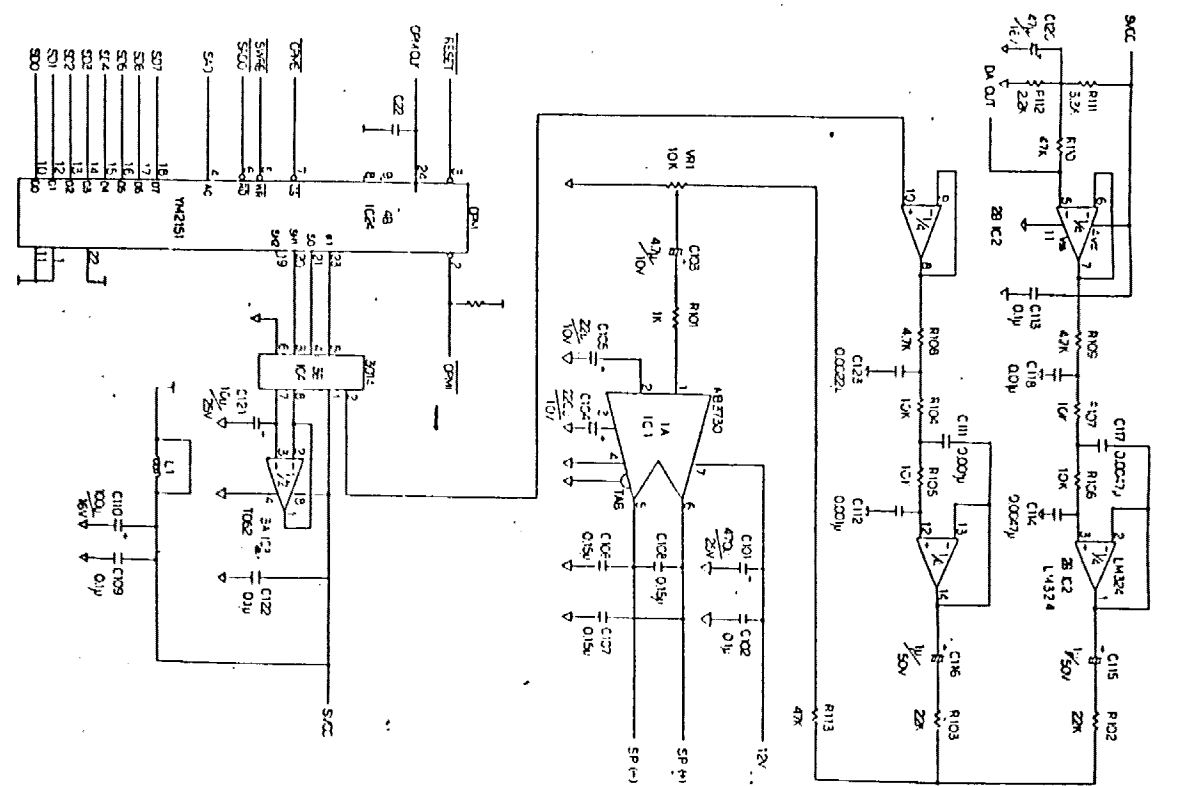
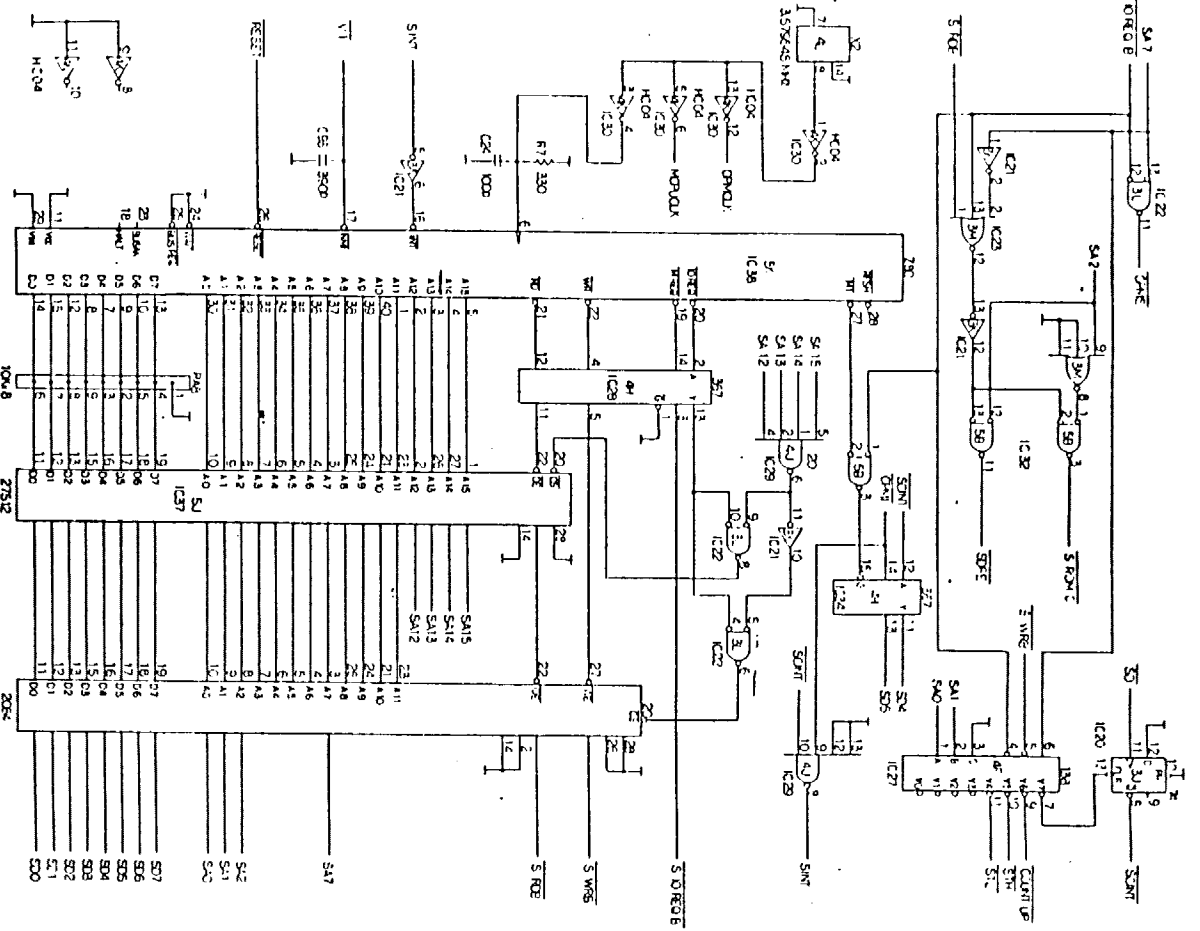
4. PCB SCHEMATIC DIAGRAMS

M75-A-B PCB: PAGES 1/5 THRU 5/5

M75-B-A PCB: PAGES 1/7 THRU 7/7

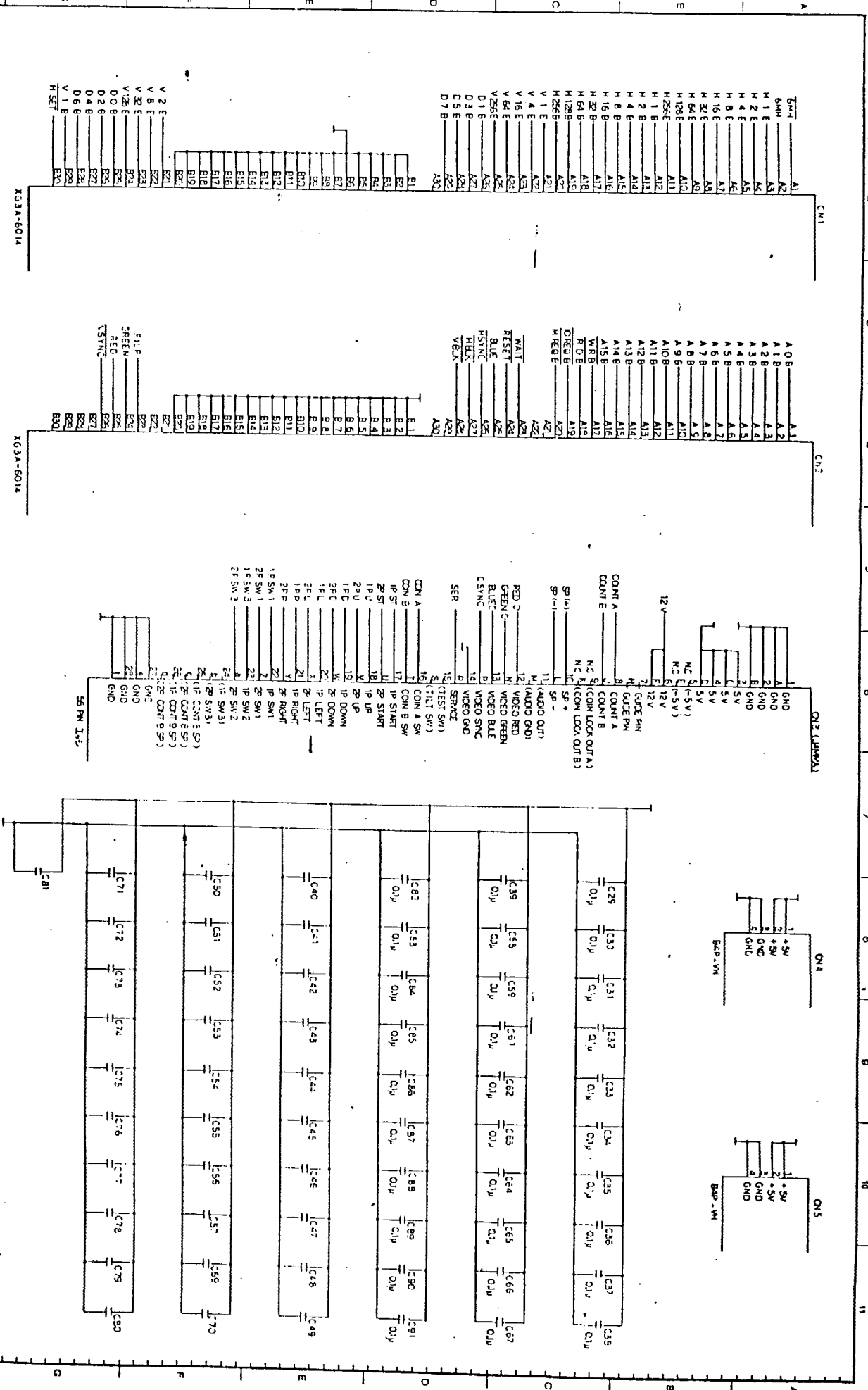


REVISION		DATE		BY		CHECKED		APPROVED	
1		07/21/78							
NANO CORPORATION NANO CORPORATION 1711 W. 17th St. Denver, CO 80202 TEL: 303-733-1111 FAX: 303-733-1111									
PROJECT		PART NO.		REV.		DATE		BY	
M75-A		M75-A		1		07/21/78		E-CO/43	
DRAWN		CHECKED		APPROVED		DATE		BY	
E-CO/43		E-CO/43		E-CO/43		07/21/78		E-CO/43	
SHEET		OF		TOTAL SHEETS		DATE		BY	
1		1		1		07/21/78		E-CO/43	



REF ID	DESCRIPTION	QUANTITY	UNIT
S0	SA1	1	IC
S1	SA2	1	IC
S2	SA3	1	IC
S3	SA4	1	IC
S4	SA5	1	IC
S5	SA6	1	IC
S6	SA7	1	IC
S7	SA8	1	IC
S8	SA9	1	IC
S9	SA10	1	IC
S10	SA11	1	IC
S11	SA12	1	IC
S12	SA13	1	IC
S13	SA14	1	IC
S14	SA15	1	IC
S15	SA16	1	IC
S16	SA17	1	IC
S17	SA18	1	IC
S18	SA19	1	IC
S19	SA20	1	IC
S20	SA21	1	IC
S21	SA22	1	IC
S22	SA23	1	IC
S23	SA24	1	IC
S24	SA25	1	IC
S25	SA26	1	IC
S26	SA27	1	IC
S27	SA28	1	IC
S28	SA29	1	IC
S29	SA30	1	IC

NANO NANO CORPORATION
 TITLE: M75-A
 DATE: 12/15/75
 DRAWN: [Signature]
 CHECKED: [Signature]
 DESIGNED: [Signature]
 E-CO/43
 4/5



XG3A-6014

XG3A-6014

XG3A-6014

XG3A-6014

XG3A-6014

XG3A-6014

XG3A-6014

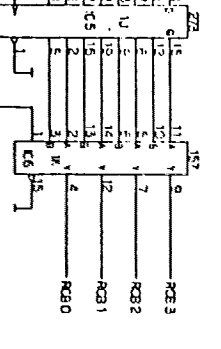
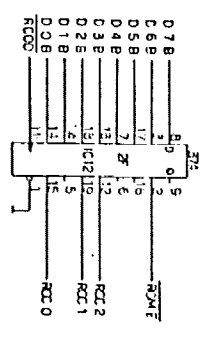
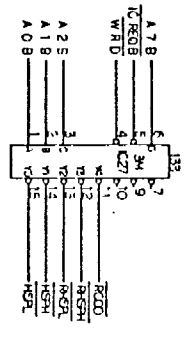
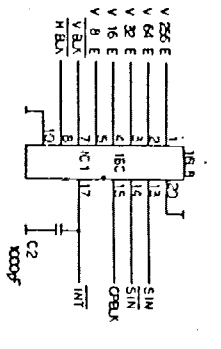
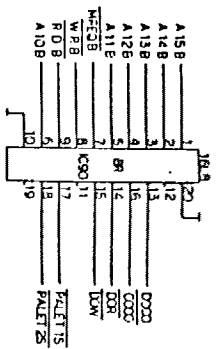
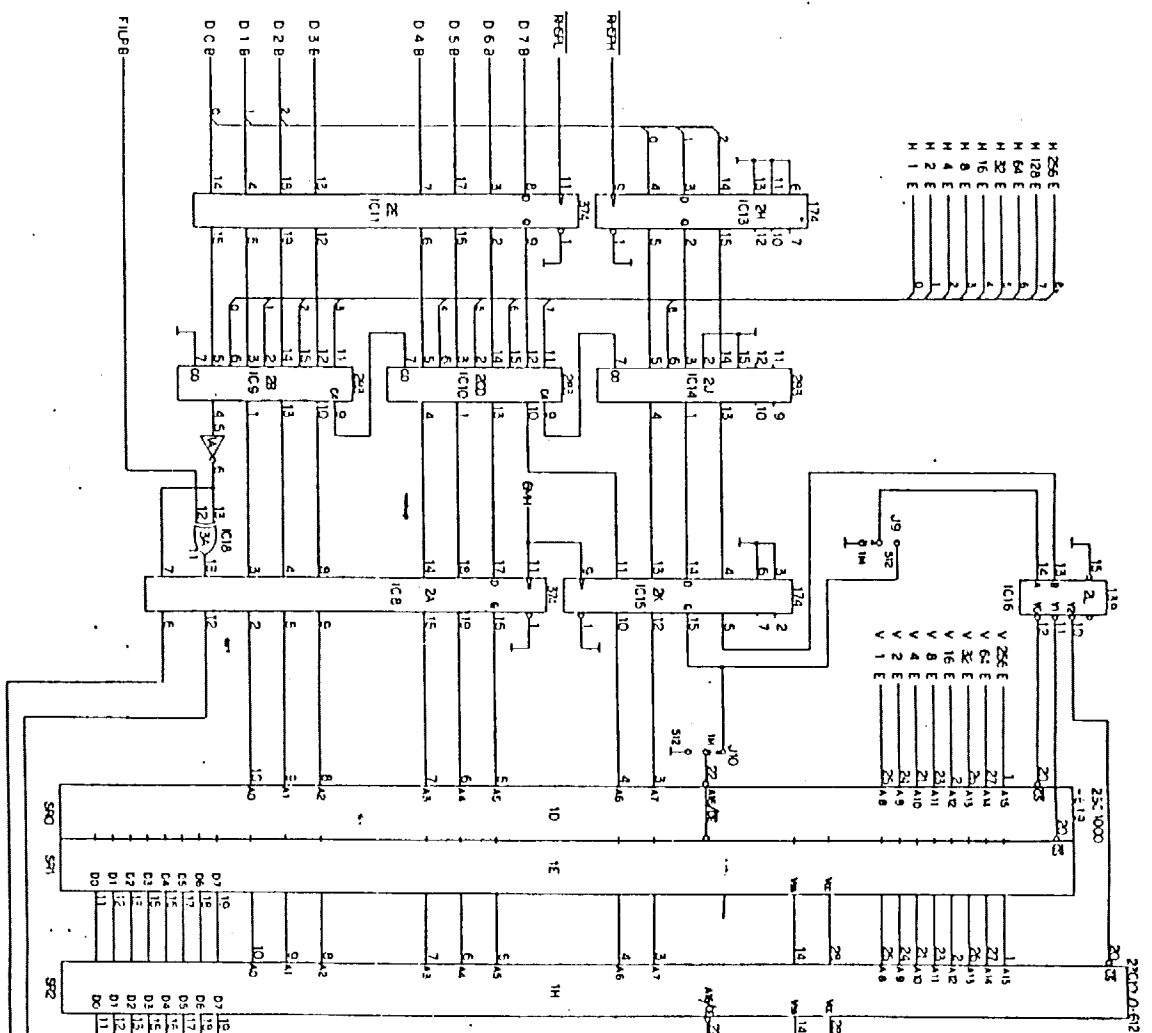
XG3A-6014

DATE	7/12/68
BY	HEVA
DESCRIPTION	REPAIR
TOLERANCE	AS SHOWN
APPROVED	
DATE	7/12/68
BY	HEVA
DESCRIPTION	REPAIR
TOLERANCE	AS SHOWN
APPROVED	

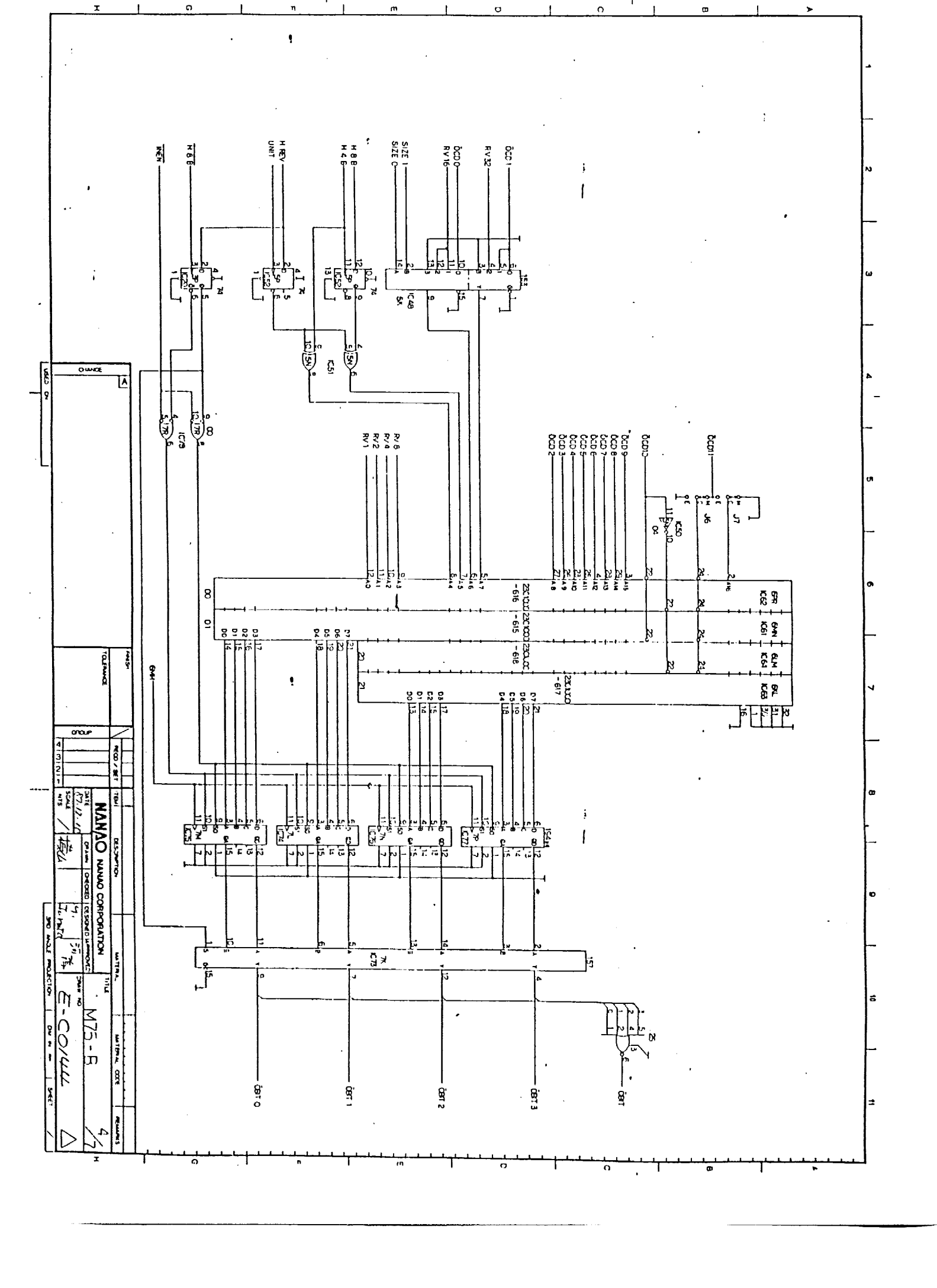
DATE	7/12/68
BY	HEVA
DESCRIPTION	REPAIR
TOLERANCE	AS SHOWN
APPROVED	
DATE	7/12/68
BY	HEVA
DESCRIPTION	REPAIR
TOLERANCE	AS SHOWN
APPROVED	

DATE	7/12/68
BY	HEVA
DESCRIPTION	REPAIR
TOLERANCE	AS SHOWN
APPROVED	
DATE	7/12/68
BY	HEVA
DESCRIPTION	REPAIR
TOLERANCE	AS SHOWN
APPROVED	

5/5

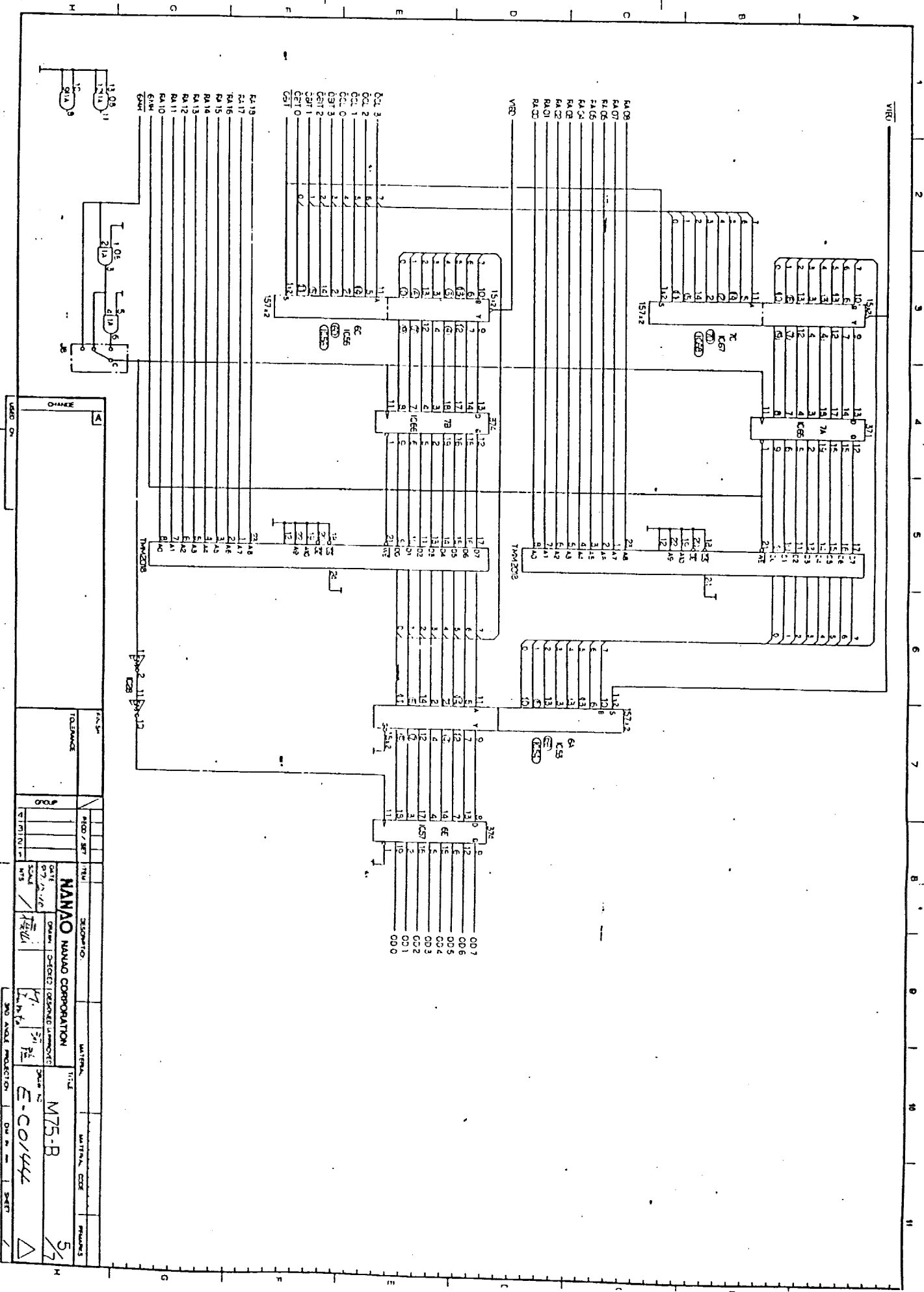


DATE: 7/11/66		DRAWN: [Signature]		CHECKED: [Signature]		DESIGNED: [Signature]		PROJECT: M75-B	
SCALE: 1/16"		SHEET: 2/7		REV: 1		MATERIAL: [Blank]		QUANTITY: [Blank]	
TOLERANCE: [Blank]		MATERIAL: [Blank]		MATERIAL: [Blank]		MATERIAL: [Blank]		MATERIAL: [Blank]	
DRAWN: [Signature]		CHECKED: [Signature]		DESIGNED: [Signature]		PROJECT: M75-B		DATE: 7/11/66	
SCALE: 1/16"		SHEET: 2/7		REV: 1		MATERIAL: [Blank]		QUANTITY: [Blank]	
TOLERANCE: [Blank]		MATERIAL: [Blank]		MATERIAL: [Blank]		MATERIAL: [Blank]		MATERIAL: [Blank]	



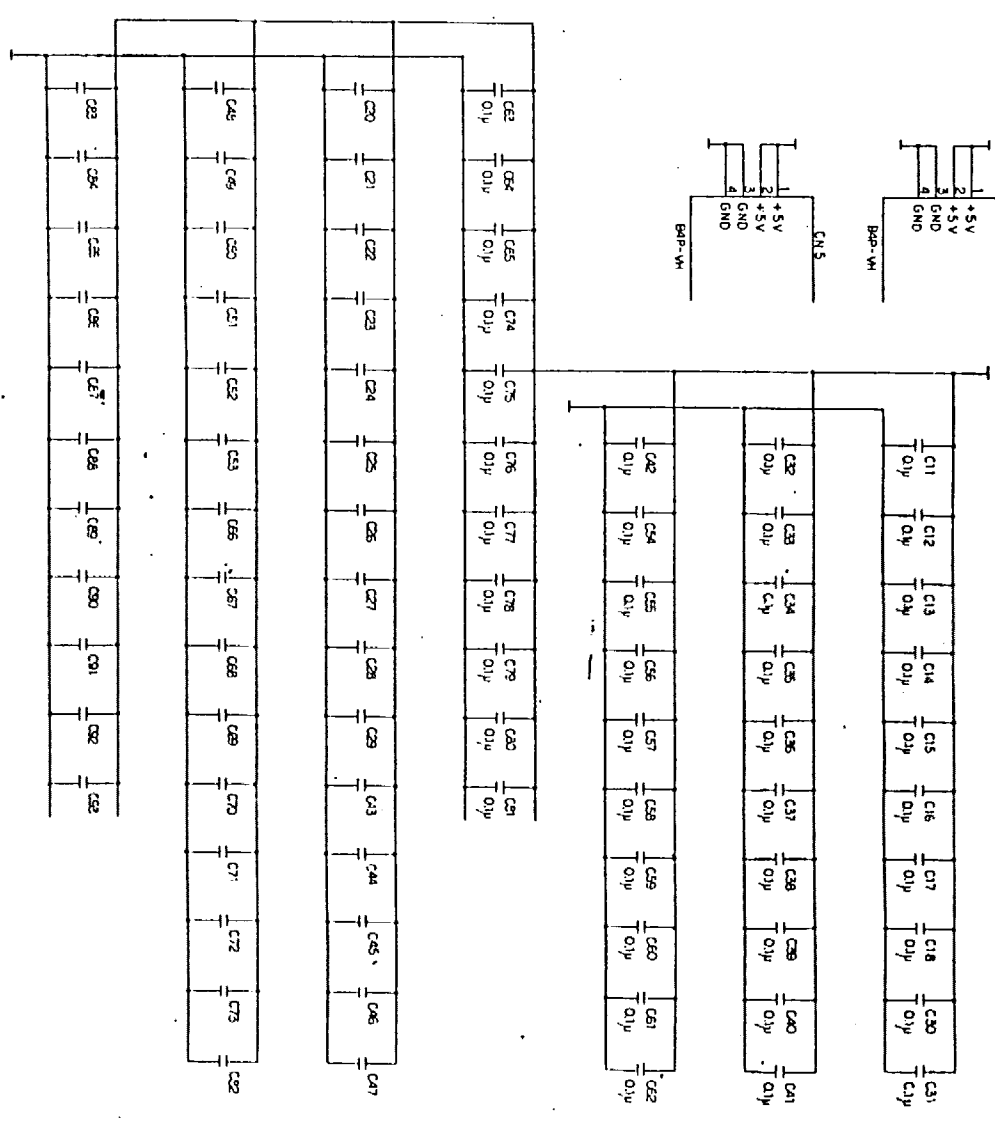
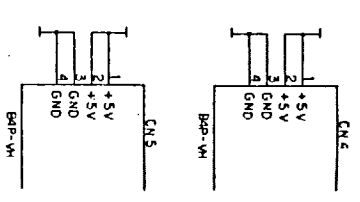
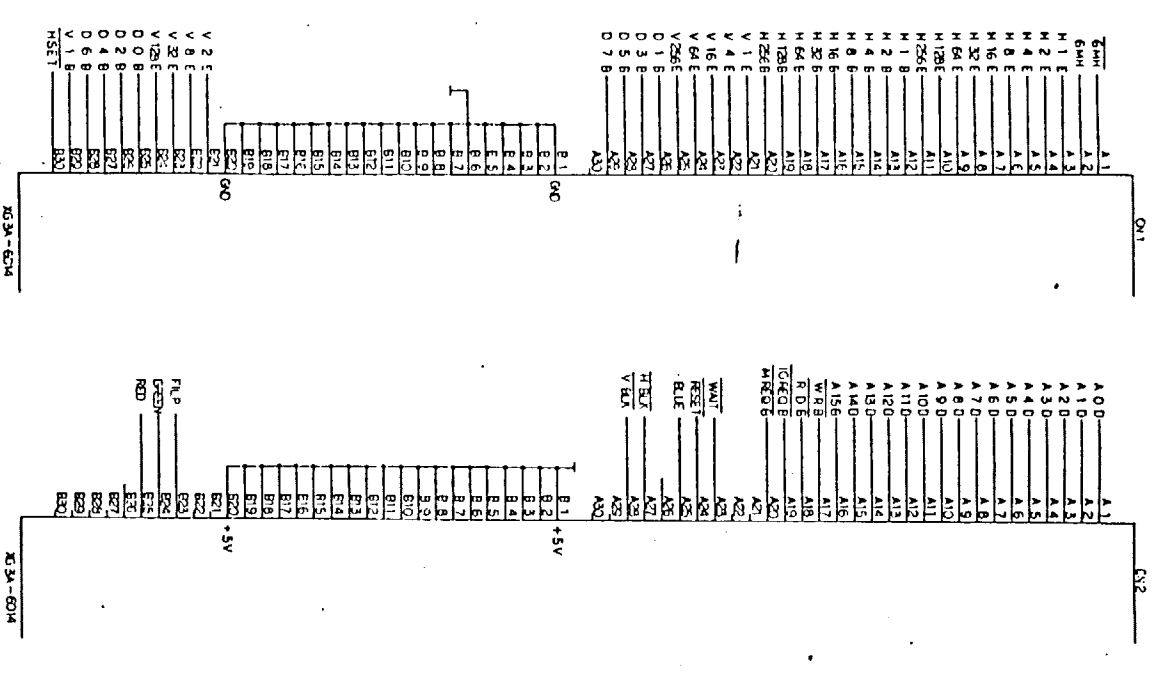
REV	DATE	DESCRIPTION	MATERIAL	TITLE	MATERIAL CODE	REVISIONS
REV 1	07/11/74	DESIGNED		M75-B		4/7
REV 2		DESIGNED				
REV 3		DESIGNED				
REV 4		DESIGNED				
REV 5		DESIGNED				
REV 6		DESIGNED				
REV 7		DESIGNED				
REV 8		DESIGNED				
REV 9		DESIGNED				
REV 10		DESIGNED				
REV 11		DESIGNED				
REV 12		DESIGNED				
REV 13		DESIGNED				
REV 14		DESIGNED				
REV 15		DESIGNED				
REV 16		DESIGNED				
REV 17		DESIGNED				
REV 18		DESIGNED				
REV 19		DESIGNED				
REV 20		DESIGNED				
REV 21		DESIGNED				
REV 22		DESIGNED				
REV 23		DESIGNED				
REV 24		DESIGNED				
REV 25		DESIGNED				
REV 26		DESIGNED				
REV 27		DESIGNED				
REV 28		DESIGNED				
REV 29		DESIGNED				
REV 30		DESIGNED				
REV 31		DESIGNED				
REV 32		DESIGNED				
REV 33		DESIGNED				
REV 34		DESIGNED				
REV 35		DESIGNED				
REV 36		DESIGNED				
REV 37		DESIGNED				
REV 38		DESIGNED				
REV 39		DESIGNED				
REV 40		DESIGNED				
REV 41		DESIGNED				
REV 42		DESIGNED				
REV 43		DESIGNED				
REV 44		DESIGNED				
REV 45		DESIGNED				
REV 46		DESIGNED				
REV 47		DESIGNED				
REV 48		DESIGNED				
REV 49		DESIGNED				
REV 50		DESIGNED				
REV 51		DESIGNED				
REV 52		DESIGNED				
REV 53		DESIGNED				
REV 54		DESIGNED				
REV 55		DESIGNED				
REV 56		DESIGNED				
REV 57		DESIGNED				
REV 58		DESIGNED				
REV 59		DESIGNED				
REV 60		DESIGNED				
REV 61		DESIGNED				
REV 62		DESIGNED				
REV 63		DESIGNED				
REV 64		DESIGNED				
REV 65		DESIGNED				
REV 66		DESIGNED				
REV 67		DESIGNED				
REV 68		DESIGNED				
REV 69		DESIGNED				
REV 70		DESIGNED				
REV 71		DESIGNED				
REV 72		DESIGNED				
REV 73		DESIGNED				
REV 74		DESIGNED				
REV 75		DESIGNED				
REV 76		DESIGNED				
REV 77		DESIGNED				
REV 78		DESIGNED				
REV 79		DESIGNED				
REV 80		DESIGNED				
REV 81		DESIGNED				
REV 82		DESIGNED				
REV 83		DESIGNED				
REV 84		DESIGNED				
REV 85		DESIGNED				
REV 86		DESIGNED				
REV 87		DESIGNED				
REV 88		DESIGNED				
REV 89		DESIGNED				
REV 90		DESIGNED				
REV 91		DESIGNED				
REV 92		DESIGNED				
REV 93		DESIGNED				
REV 94		DESIGNED				
REV 95		DESIGNED				
REV 96		DESIGNED				
REV 97		DESIGNED				
REV 98		DESIGNED				
REV 99		DESIGNED				
REV 100		DESIGNED				

NAME: NAMMO CORPORATION
 TITLE: M75-B
 DRAWING NO: E-CORVILL
 SHEET: 4/7
 DATE: 07/11/74
 DESIGNED: [Signature]
 CHECKED: [Signature]
 APPROVED: [Signature]
 MATERIAL CODE: [Blank]
 REVISIONS: [Blank]



CHANGE		USED ON	
NO.	DESCRIPTION	DATE	BY
1			
2			
3			
4			
5			
6			
7			
8			
9			
10			
11			
12			
13			
14			
15			
16			
17			
18			
19			
20			
21			
22			
23			
24			
25			
26			
27			
28			
29			
30			
31			
32			
33			
34			
35			
36			
37			
38			
39			
40			
41			
42			
43			
44			
45			
46			
47			
48			
49			
50			
51			
52			
53			
54			
55			
56			
57			
58			
59			
60			
61			
62			
63			
64			
65			
66			
67			
68			
69			
70			
71			
72			
73			
74			
75			
76			
77			
78			
79			
80			
81			
82			
83			
84			
85			
86			
87			
88			
89			
90			
91			
92			
93			
94			
95			
96			
97			
98			
99			
100			

REVISIONS:
 NO. DATE BY DESCRIPTION
 1 07/20/78 J.M.V. Initial
 2 08/15/78 J.M.V. Revise
 3 09/10/78 J.M.V. Revise
 4 10/15/78 J.M.V. Revise
 5 11/10/78 J.M.V. Revise
 6 12/15/78 J.M.V. Revise
 7 01/10/79 J.M.V. Revise
 8 02/15/79 J.M.V. Revise
 9 03/10/79 J.M.V. Revise
 10 04/15/79 J.M.V. Revise
 11 05/10/79 J.M.V. Revise
 12 06/15/79 J.M.V. Revise
 13 07/10/79 J.M.V. Revise
 14 08/15/79 J.M.V. Revise
 15 09/10/79 J.M.V. Revise
 16 10/15/79 J.M.V. Revise
 17 11/10/79 J.M.V. Revise
 18 12/15/79 J.M.V. Revise
 19 01/10/80 J.M.V. Revise
 20 02/15/80 J.M.V. Revise
 21 03/10/80 J.M.V. Revise
 22 04/15/80 J.M.V. Revise
 23 05/10/80 J.M.V. Revise
 24 06/15/80 J.M.V. Revise
 25 07/10/80 J.M.V. Revise
 26 08/15/80 J.M.V. Revise
 27 09/10/80 J.M.V. Revise
 28 10/15/80 J.M.V. Revise
 29 11/10/80 J.M.V. Revise
 30 12/15/80 J.M.V. Revise
 31 01/10/81 J.M.V. Revise
 32 02/15/81 J.M.V. Revise
 33 03/10/81 J.M.V. Revise
 34 04/15/81 J.M.V. Revise
 35 05/10/81 J.M.V. Revise
 36 06/15/81 J.M.V. Revise
 37 07/10/81 J.M.V. Revise
 38 08/15/81 J.M.V. Revise
 39 09/10/81 J.M.V. Revise
 40 10/15/81 J.M.V. Revise
 41 11/10/81 J.M.V. Revise
 42 12/15/81 J.M.V. Revise
 43 01/10/82 J.M.V. Revise
 44 02/15/82 J.M.V. Revise
 45 03/10/82 J.M.V. Revise
 46 04/15/82 J.M.V. Revise
 47 05/10/82 J.M.V. Revise
 48 06/15/82 J.M.V. Revise
 49 07/10/82 J.M.V. Revise
 50 08/15/82 J.M.V. Revise
 51 09/10/82 J.M.V. Revise
 52 10/15/82 J.M.V. Revise
 53 11/10/82 J.M.V. Revise
 54 12/15/82 J.M.V. Revise
 55 01/10/83 J.M.V. Revise
 56 02/15/83 J.M.V. Revise
 57 03/10/83 J.M.V. Revise
 58 04/15/83 J.M.V. Revise
 59 05/10/83 J.M.V. Revise
 60 06/15/83 J.M.V. Revise
 61 07/10/83 J.M.V. Revise
 62 08/15/83 J.M.V. Revise
 63 09/10/83 J.M.V. Revise
 64 10/15/83 J.M.V. Revise
 65 11/10/83 J.M.V. Revise
 66 12/15/83 J.M.V. Revise
 67 01/10/84 J.M.V. Revise
 68 02/15/84 J.M.V. Revise
 69 03/10/84 J.M.V. Revise
 70 04/15/84 J.M.V. Revise
 71 05/10/84 J.M.V. Revise
 72 06/15/84 J.M.V. Revise
 73 07/10/84 J.M.V. Revise
 74 08/15/84 J.M.V. Revise
 75 09/10/84 J.M.V. Revise
 76 10/15/84 J.M.V. Revise
 77 11/10/84 J.M.V. Revise
 78 12/15/84 J.M.V. Revise
 79 01/10/85 J.M.V. Revise
 80 02/15/85 J.M.V. Revise
 81 03/10/85 J.M.V. Revise
 82 04/15/85 J.M.V. Revise
 83 05/10/85 J.M.V. Revise
 84 06/15/85 J.M.V. Revise
 85 07/10/85 J.M.V. Revise
 86 08/15/85 J.M.V. Revise
 87 09/10/85 J.M.V. Revise
 88 10/15/85 J.M.V. Revise
 89 11/10/85 J.M.V. Revise
 90 12/15/85 J.M.V. Revise
 91 01/10/86 J.M.V. Revise
 92 02/15/86 J.M.V. Revise
 93 03/10/86 J.M.V. Revise
 94 04/15/86 J.M.V. Revise
 95 05/10/86 J.M.V. Revise
 96 06/15/86 J.M.V. Revise
 97 07/10/86 J.M.V. Revise
 98 08/15/86 J.M.V. Revise
 99 09/10/86 J.M.V. Revise
 100 10/15/86 J.M.V. Revise
 101 11/10/86 J.M.V. Revise
 102 12/15/86 J.M.V. Revise
 103 01/10/87 J.M.V. Revise
 104 02/15/87 J.M.V. Revise
 105 03/10/87 J.M.V. Revise
 106 04/15/87 J.M.V. Revise
 107 05/10/87 J.M.V. Revise
 108 06/15/87 J.M.V. Revise
 109 07/10/87 J.M.V. Revise
 110 08/15/87 J.M.V. Revise
 111 09/10/87 J.M.V. Revise
 112 10/15/87 J.M.V. Revise
 113 11/10/87 J.M.V. Revise
 114 12/15/87 J.M.V. Revise
 115 01/10/88 J.M.V. Revise
 116 02/15/88 J.M.V. Revise
 117 03/10/88 J.M.V. Revise
 118 04/15/88 J.M.V. Revise
 119 05/10/88 J.M.V. Revise
 120 06/15/88 J.M.V. Revise
 121 07/10/88 J.M.V. Revise
 122 08/15/88 J.M.V. Revise
 123 09/10/88 J.M.V. Revise
 124 10/15/88 J.M.V. Revise
 125 11/10/88 J.M.V. Revise
 126 12/15/88 J.M.V. Revise
 127 01/10/89 J.M.V. Revise
 128 02/15/89 J.M.V. Revise
 129 03/10/89 J.M.V. Revise
 130 04/15/89 J.M.V. Revise
 131 05/10/89 J.M.V. Revise
 132 06/15/89 J.M.V. Revise
 133 07/10/89 J.M.V. Revise
 134 08/15/89 J.M.V. Revise
 135 09/10/89 J.M.V. Revise
 136 10/15/89 J.M.V. Revise
 137 11/10/89 J.M.V. Revise
 138 12/15/89 J.M.V. Revise
 139 01/10/90 J.M.V. Revise
 140 02/15/90 J.M.V. Revise
 141 03/10/90 J.M.V. Revise
 142 04/15/90 J.M.V. Revise
 143 05/10/90 J.M.V. Revise
 144 06/15/90 J.M.V. Revise
 145 07/10/90 J.M.V. Revise
 146 08/15/90 J.M.V. Revise
 147 09/10/90 J.M.V. Revise
 148 10/15/90 J.M.V. Revise
 149 11/10/90 J.M.V. Revise
 150 12/15/90 J.M.V. Revise
 151 01/10/91 J.M.V. Revise
 152 02/15/91 J.M.V. Revise
 153 03/10/91 J.M.V. Revise
 154 04/15/91 J.M.V. Revise
 155 05/10/91 J.M.V. Revise
 156 06/15/91 J.M.V. Revise
 157 07/10/91 J.M.V. Revise
 158 08/15/91 J.M.V. Revise
 159 09/10/91 J.M.V. Revise
 160 10/15/91 J.M.V. Revise
 161 11/10/91 J.M.V. Revise
 162 12/15/91 J.M.V. Revise
 163 01/10/92 J.M.V. Revise
 164 02/15/92 J.M.V. Revise
 165 03/10/92 J.M.V. Revise
 166 04/15/92 J.M.V. Revise
 167 05/10/92 J.M.V. Revise
 168 06/15/92 J.M.V. Revise
 169 07/10/92 J.M.V. Revise
 170 08/15/92 J.M.V. Revise
 171 09/10/92 J.M.V. Revise
 172 10/15/92 J.M.V. Revise
 173 11/10/92 J.M.V. Revise
 174 12/15/92 J.M.V. Revise
 175 01/10/93 J.M.V. Revise
 176 02/15/93 J.M.V. Revise
 177 03/10/93 J.M.V. Revise
 178 04/15/93 J.M.V. Revise
 179 05/10/93 J.M.V. Revise
 180 06/15/93 J.M.V. Revise
 181 07/10/93 J.M.V. Revise
 182 08/15/93 J.M.V. Revise
 183 09/10/93 J.M.V. Revise
 184 10/15/93 J.M.V. Revise
 185 11/10/93 J.M.V. Revise
 186 12/15/93 J.M.V. Revise
 187 01/10/94 J.M.V. Revise
 188 02/15/94 J.M.V. Revise
 189 03/10/94 J.M.V. Revise
 190 04/15/94 J.M.V. Revise
 191 05/10/94 J.M.V. Revise
 192 06/15/94 J.M.V. Revise
 193 07/10/94 J.M.V. Revise
 194 08/15/94 J.M.V. Revise
 195 09/10/94 J.M.V. Revise
 196 10/15/94 J.M.V. Revise
 197 11/10/94 J.M.V. Revise
 198 12/15/94 J.M.V. Revise
 199 01/10/95 J.M.V. Revise
 200 02/15/95 J.M.V. Revise
 201 03/10/95 J.M.V. Revise
 202 04/15/95 J.M.V. Revise
 203 05/10/95 J.M.V. Revise
 204 06/15/95 J.M.V. Revise
 205 07/10/95 J.M.V. Revise
 206 08/15/95 J.M.V. Revise
 207 09/10/95 J.M.V. Revise
 208 10/15/95 J.M.V. Revise
 209 11/10/95 J.M.V. Revise
 210 12/15/95 J.M.V. Revise
 211 01/10/96 J.M.V. Revise
 212 02/15/96 J.M.V. Revise
 213 03/10/96 J.M.V. Revise
 214 04/15/96 J.M.V. Revise
 215 05/10/96 J.M.V. Revise
 216 06/15/96 J.M.V. Revise
 217 07/10/96 J.M.V. Revise
 218 08/15/96 J.M.V. Revise
 219 09/10/96 J.M.V. Revise
 220 10/15/96 J.M.V. Revise
 221 11/10/96 J.M.V. Revise
 222 12/15/96 J.M.V. Revise
 223 01/10/97 J.M.V. Revise
 224 02/15/97 J.M.V. Revise
 225 03/10/97 J.M.V. Revise
 226 04/15/97 J.M.V. Revise
 227 05/10/97 J.M.V. Revise
 228 06/15/97 J.M.V. Revise
 229 07/10/97 J.M.V. Revise
 230 08/15/97 J.M.V. Revise
 231 09/10/97 J.M.V. Revise
 232 10/15/97 J.M.V. Revise
 233 11/10/97 J.M.V. Revise
 234 12/15/97 J.M.V. Revise
 235 01/10/98 J.M.V. Revise
 236 02/15/98 J.M.V. Revise
 237 03/10/98 J.M.V. Revise
 238 04/15/98 J.M.V. Revise
 239 05/10/98 J.M.V. Revise
 240 06/15/98 J.M.V. Revise
 241 07/10/98 J.M.V. Revise
 242 08/15/98 J.M.V. Revise
 243 09/10/98 J.M.V. Revise
 244 10/15/98 J.M.V. Revise
 245 11/10/98 J.M.V. Revise
 246 12/15/98 J.M.V. Revise
 247 01/10/99 J.M.V. Revise
 248 02/15/99 J.M.V. Revise
 249 03/10/99 J.M.V. Revise
 250 04/15/99 J.M.V. Revise
 251 05/10/99 J.M.V. Revise
 252 06/15/99 J.M.V. Revise
 253 07/10/99 J.M.V. Revise
 254 08/15/99 J.M.V. Revise
 255 09/10/99 J.M.V. Revise
 256 10/15/99 J.M.V. Revise
 257 11/10/99 J.M.V. Revise
 258 12/15/99 J.M.V. Revise
 259 01/10/00 J.M.V. Revise
 260 02/15/00 J.M.V. Revise
 261 03/10/00 J.M.V. Revise
 262 04/15/00 J.M.V. Revise
 263 05/10/00 J.M.V. Revise
 264 06/15/00 J.M.V. Revise
 265 07/10/00 J.M.V. Revise
 266 08/15/00 J.M.V. Revise
 267 09/10/00 J.M.V. Revise
 268 10/15/00 J.M.V. Revise
 269 11/10/00 J.M.V. Revise
 270 12/15/00 J.M.V. Revise
 271 01/10/01 J.M.V. Revise
 272 02/15/01 J.M.V. Revise
 273 03/10/01 J.M.V. Revise
 274 04/15/01 J.M.V. Revise
 275 05/10/01 J.M.V. Revise
 276 06/15/01 J.M.V. Revise
 277 07/10/01 J.M.V. Revise
 278 08/15/01 J.M.V. Revise
 279 09/10/01 J.M.V. Revise
 280 10/15/01 J.M.V. Revise
 281 11/10/01 J.M.V. Revise
 282 12/15/01 J.M.V. Revise
 283 01/10/02 J.M.V. Revise
 284 02/15/02 J.M.V. Revise
 285 03/10/02 J.M.V. Revise
 286 04/15/02 J.M.V. Revise
 287 05/10/02 J.M.V. Revise
 288 06/15/02 J.M.V. Revise
 289 07/10/02 J.M.V. Revise
 290 08/15/02 J.M.V. Revise
 291 09/10/02 J.M.V. Revise
 292 10/15/02 J.M.V. Revise
 293 11/10/02 J.M.V. Revise
 294 12/15/02 J.M.V. Revise
 295 01/10/03 J.M.V. Revise
 296 02/15/03 J.M.V. Revise
 297 03/10/03 J.M.V. Revise
 298 04/15/03 J.M.V. Revise
 299 05/10/03 J.M.V. Revise
 300 06/15/03 J.M.V. Revise
 301 07/10/03 J.M.V. Revise
 302 08/15/03 J.M.V. Revise
 303 09/10/03 J.M.V. Revise
 304 10/15/03 J.M.V. Revise
 305 11/10/03 J.M.V. Revise
 306 12/15/03 J.M.V. Revise
 307 01/10/04 J.M.V. Revise
 308 02/15/04 J.M.V. Revise
 309 03/10/04 J.M.V. Revise
 310 04/15/04 J.M.V. Revise
 311 05/10/04 J.M.V. Revise
 312 06/15/04 J.M.V. Revise
 313 07/10/04 J.M.V. Revise
 314 08/15/04 J.M.V. Revise
 315 09/10/04 J.M.V. Revise
 316 10/15/04 J.M.V. Revise
 317 11/10/04 J.M.V. Revise
 318 12/15/04 J.M.V. Revise
 319 01/10/05 J.M.V. Revise
 320 02/15/05 J.M.V. Revise
 321 03/10/05 J.M.V. Revise
 322 04/15/05 J.M.V. Revise
 323 05/10/05 J.M.V. Revise
 324 06/15/05 J.M.V. Revise
 325 07/10/05 J.M.V. Revise
 326 08/15/05 J.M.V. Revise
 327 09/10/05 J.M.V. Revise
 328 10/15/05 J.M.V. Revise
 329 11/10/05 J.M.V. Revise
 330 12/15/05 J.M.V. Revise
 331 01/10/06 J.M.V. Revise
 332 02/15/06 J.M.V. Revise
 333 03/10/06 J.M.V. Revise
 334 04/15/06 J.M.V. Revise
 335 05/10/06 J.M.V. Revise
 336 06/15/06 J.M.V. Revise
 337 07/10/06 J.M.V. Revise
 338 08/15/06 J.M.V. Revise
 339 09/10/06 J.M.V. Revise
 340 10/15/06 J.M.V. Revise
 341 11/10/06 J.M.V. Revise
 342 12/15/06 J.M.V. Revise
 343 01/10/07 J.M.V. Revise
 344 02/15/07 J.M.V. Revise
 345 03/10/07 J.M.V. Revise
 346 04/15/07 J.M.V. Revise
 347 05/10/07 J.M.V. Revise
 348 06/15/07 J.M.V. Revise
 349 07/10/07 J.M.V. Revise
 350 08/15/07 J.M.V. Revise
 351 09/10/07 J.M.V. Revise
 352 10/15/07 J.M.V. Revise
 353 11/10/07 J.M.V. Revise
 354 12/15/07 J.M.V. Revise
 355 01/10/08 J.M.V. Revise
 356 02/15/08 J.M.V. Revise
 357 03/10/08 J.M.V. Revise
 358 04/15/08 J.M.V. Revise
 359 05/10/08 J.M.V. Revise
 360 06/15/08 J.M.V. Revise
 361 07/10/08 J.M.V. Revise
 362 08/15/08 J.M.V. Revise
 363 09/10/08 J.M.V. Revise
 364 10/15/08 J.M.V. Revise
 365 11/10/08 J.M.V. Revise
 366 12/15/08 J.M.V.



NAME		REV		DATE		DRAWN		CHECKED		APPROVED	
M75-B		1		12/1/74		E-COLL		E-COLL		E-COLL	
TOLERANCE		MATERIAL		QUANTITY		REVISIONS		DATE		BY	
		M75-B		74							