

After Burner Climax SDX Actuator replacement

1. Shut down all powers connected to the machine. It may cause an electric shock or a short circuit.
2. Remove the Front Cover by removing 9 M5X16L Truss Screws.

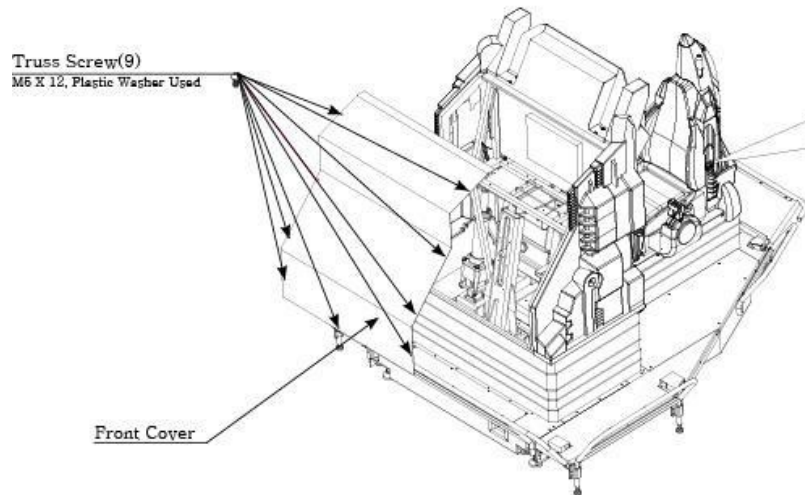
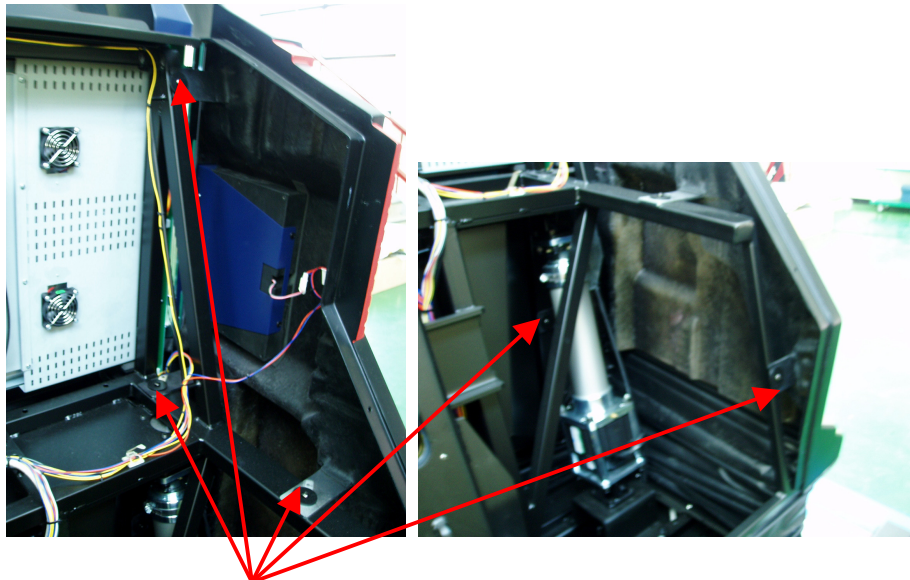


Fig.1

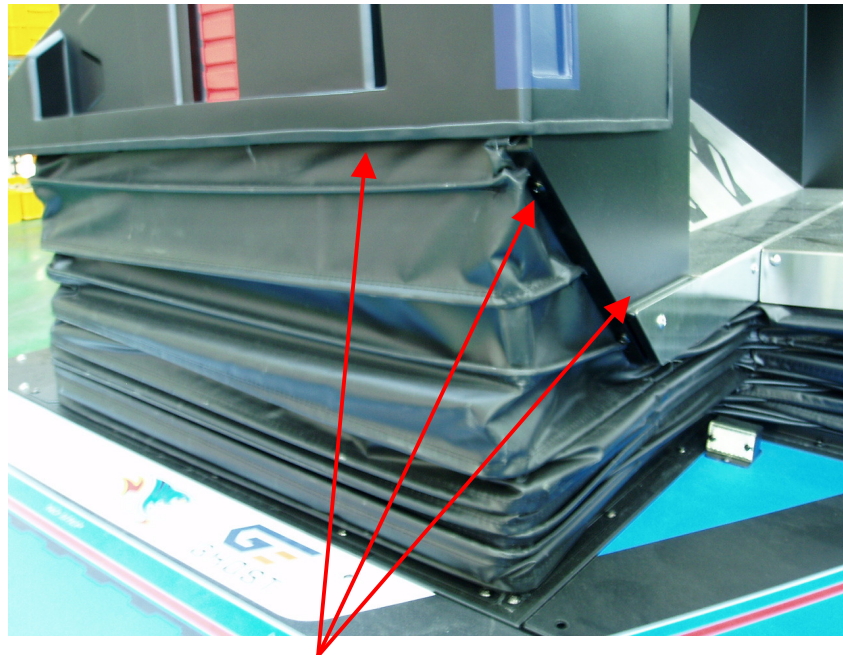
3. Remove the Front Speaker connector and the Side LED Board connector at the side of the actuator that needs to be replaced. Remove 5 M5X12L truss screws as shown below. Lift up slightly and remove.



Truss Screw (5)
M5X12L

Fig. 2

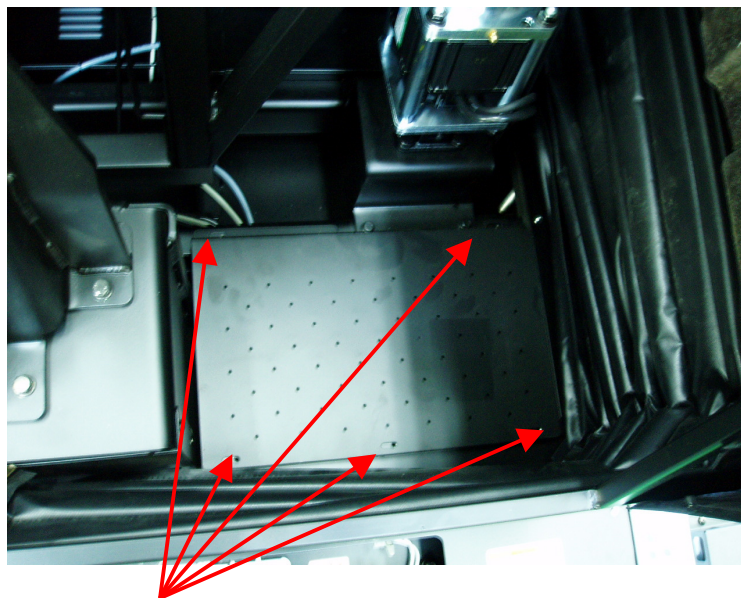
4. Remove the truss screws on the Cabin and remove the Bellows.



Truss Screw (18)

Fig. 3

4. Remove the Controller Cover by removing the 5 M5X12L truss screws.



Truss Screw (5)
M5X12L

Fig. 4

5. Remove the Earth, Limit switch cable and the 3 phase power line(Fig.5) from the

Motor Controller. Also, remove the clamps and ties holding these lines without damaging the lines themselves.

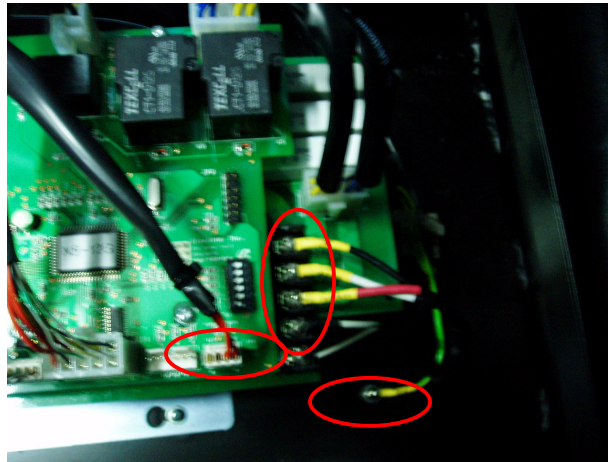


Fig. 5

6. Remove the cable tie(Fig. 6) and by using a Philips Head screwdriver, loosen the sus bend. Remove the Limit Switch Bracket.

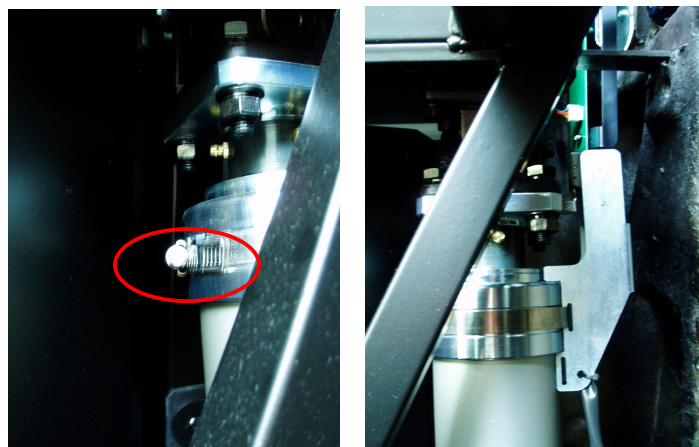


Fig. 6

7. Prepare a jig. (400mmX100mmX200mm : widthXlengthXheight)



Fig. 7

8. By lifting the points noted in Fig.8, place the jig so the cabin is stable. Use caution so the jig does not damage the Motor Controller Board.

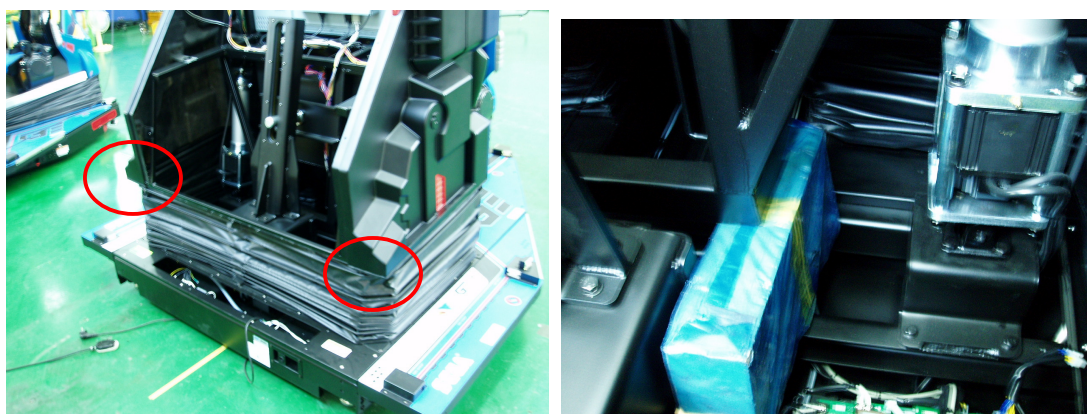


Fig. 8

9. Remove the 17mm hex bolts from the points noted in Fig 9. Replace the actuator.

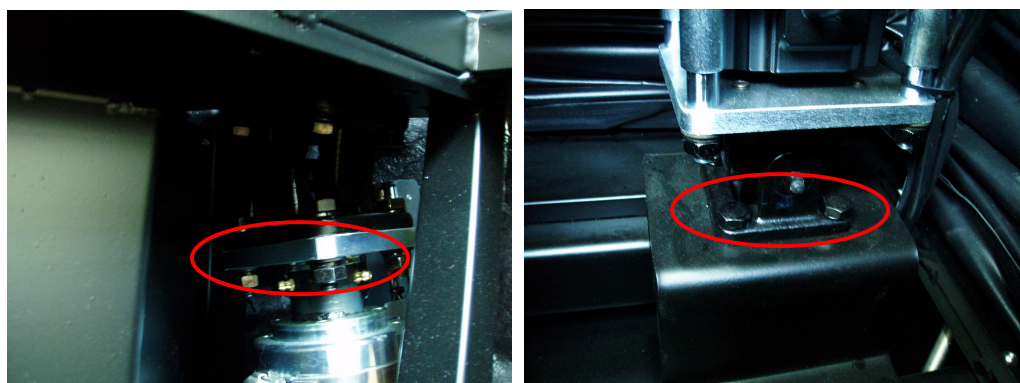


Fig. 9

10. Assembly can be done in a reverse order of disassemble.

<CAUTION>

1. Make sure the motor cable and the grease nipple faces outward when installing the Actuator.
2. Limit switch shall be installed after the actuator is installed. Push the bracket all the way up and position the limit switch at the center line of the universal joint plange. Fasten with a SUS bend.(Fig. 10)

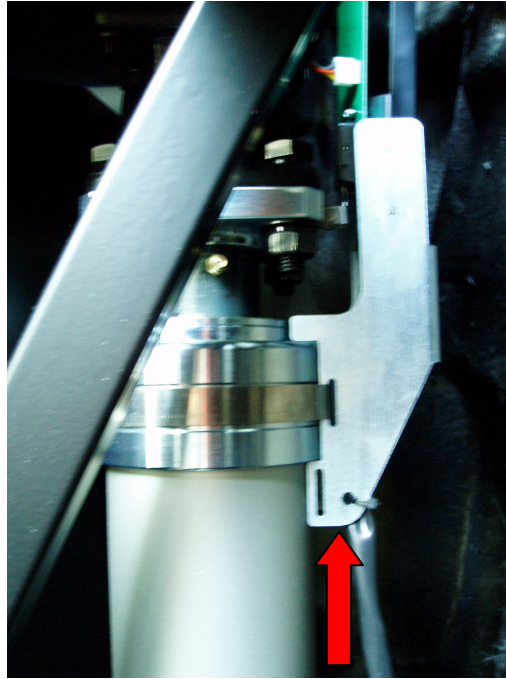


Fig. 10

3. Do not force the Side FRP too much. It may be damaged. Use caution.