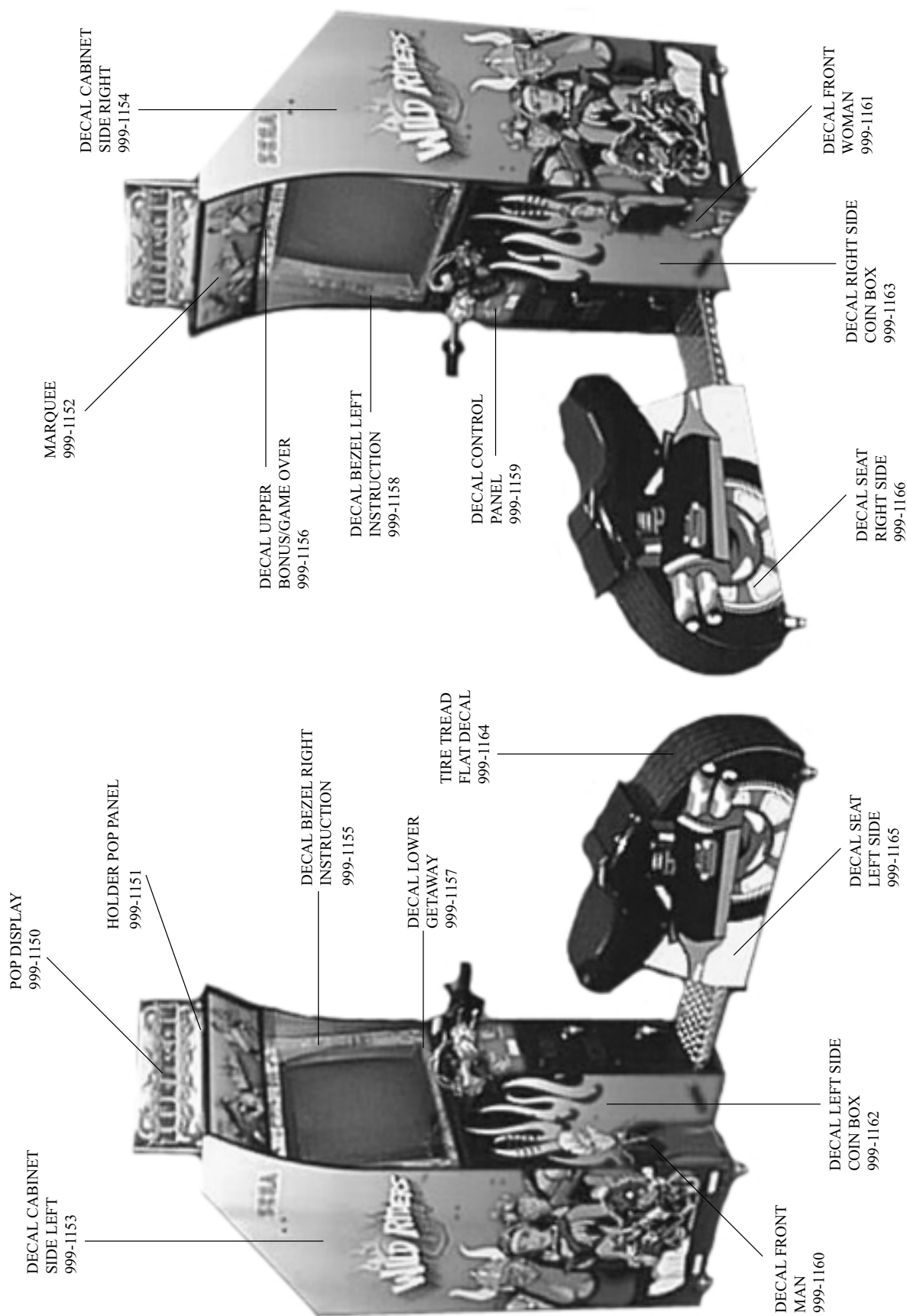
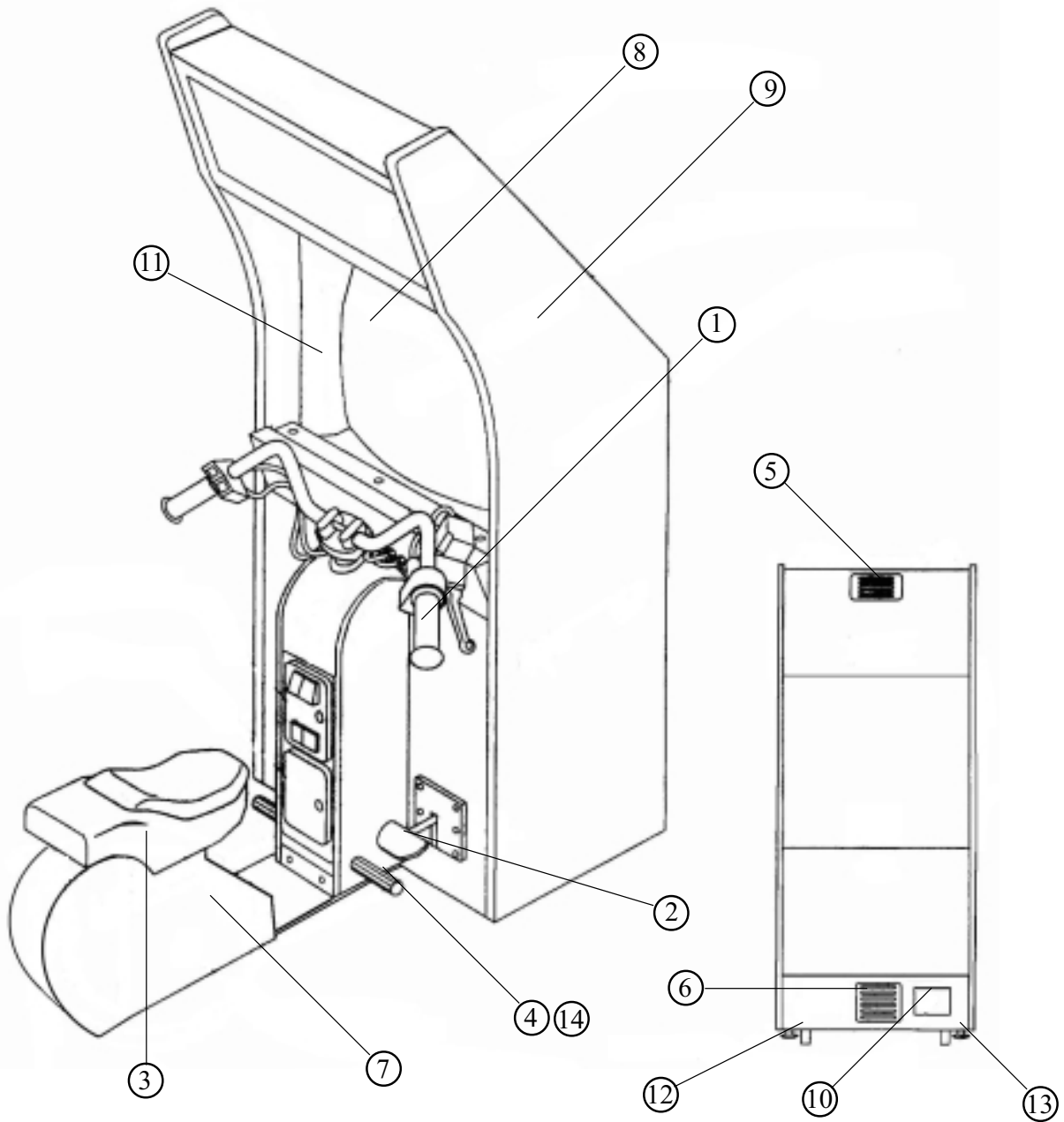


16. DESIGN RELATED PARTS



17. PARTS LIST

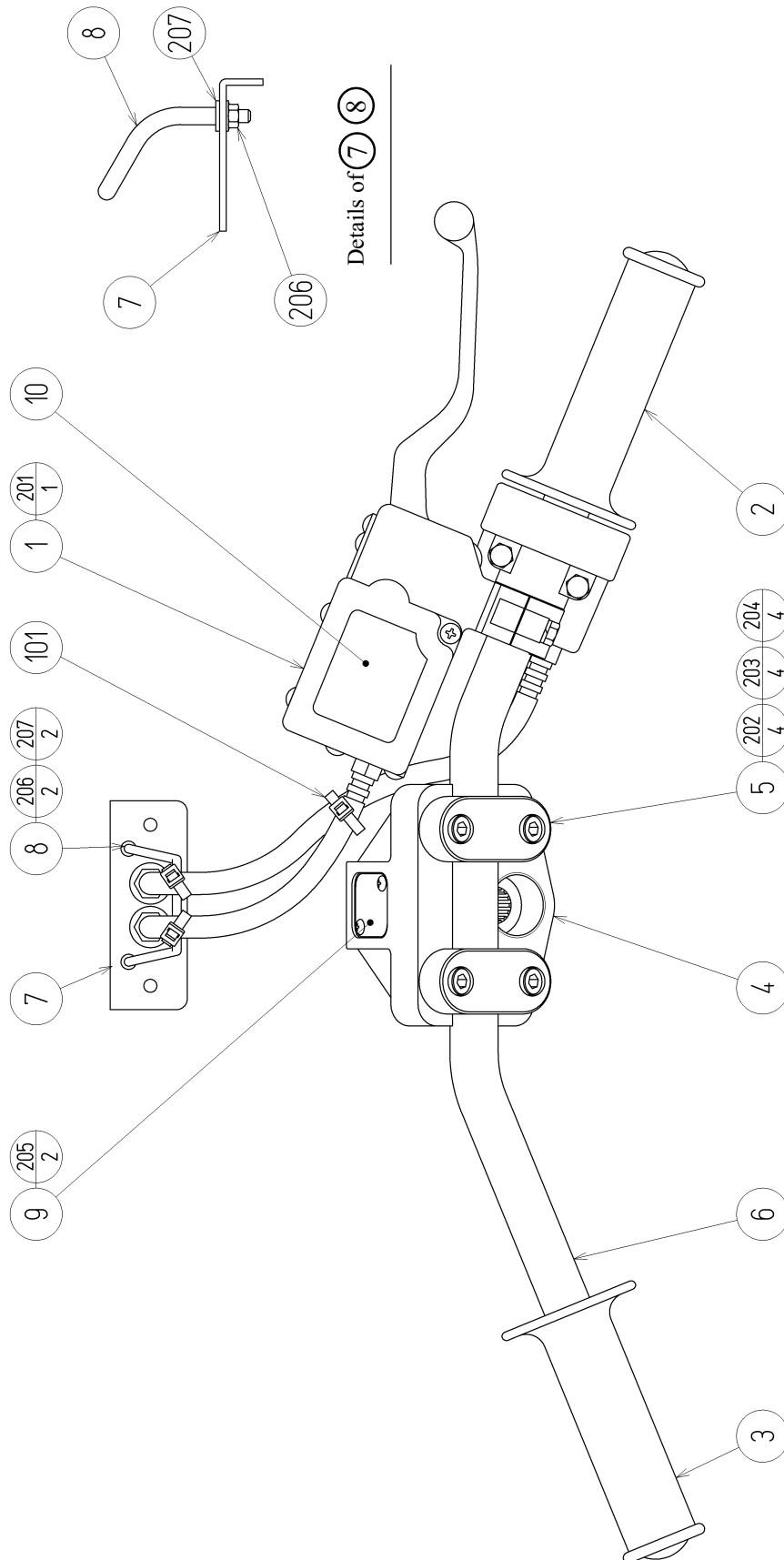
① TOP ASSY WRD



ITEM NO.	PART NO.	DESCRIPTION
1	WRD-2500	ASSY HANDLE
2	CTA-1650	BRAKE UNIT
3		SEAT CABI
4	999-1167	FOOT REST
5	999-1168	VENT -4 HOLE AIR BLACK PDRCOAT
6	999-1065	VENT -8 HOLE AIR BLACK PDRCOAT
7	LOC. PURCHASE	WOOFER
8		29 INCH MONITOR
9		CABINET
10		AC UNIT
11	999-1170	27" BEZEL
12	999-0169	CASTER
13	999-0167	LEG LEVELER
14	999-1169	COVER FOOT REST

② ASSY HANDLE (WRD-2500)

(D-1/2)



M6 SCREW FASTENING TORQUE TO BE : 8.8N•m

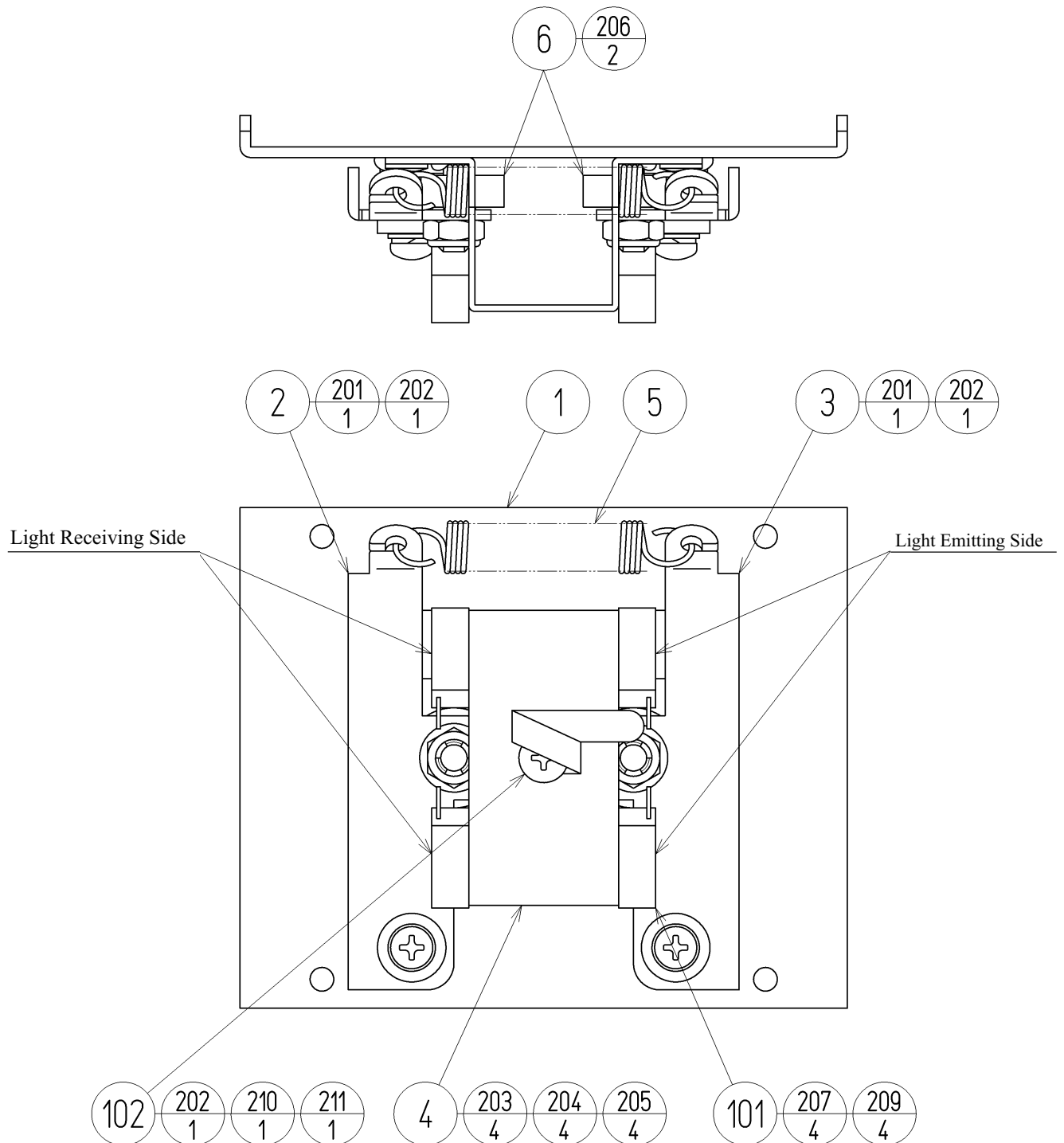
② ASSY HANDLE (WRD-2500)

(D-2/2)

ITEM NO.	PART NO.	DESCRIPTION
1	WRD-2550	ASSY BRAKE MEDHA
2	WRD-2600	ASSY THROTTLE
3	HLD-2002	GRIP LEFT
4	MJT-3603X	MOUNT BLOCK
5	MJT-3612	HANDLE HOLDER
6	WRD-2501	HANDLE BAR
7	WRD-2502	WIRE MOUNT PLATE
8	WRD-2503	WIRE STAY
9	WRD-2504	HOLE LID
10	WRD-2505	STICKER MASTER CYLINDER
101	280-6623-1S-0	PLASTIC TIE BELT PLT-1S-0
201	000-T00412-0B	M SCR TH BLK M4 X 12
202	020-000620-0Z	HEX SKT H CAP SCR BLK 0Z M6 X 20
203	060-F00600-0B	FLT WSHR BLK M6
204	060-S00600-0B	SPR WSHR BLK M6
205	000-T00310-0C	M SCR TH CRM M3 X 10
206	050-F00300	FLG NUT M3
207	060-F00300-0B	FLT WSHR BLK M3

③ ASSY CENTERING BASE (WRD-2100)

(D-1/2)



⑥ The tightening torque to each screw shall be 2.45 N•m.

③ ASSY CENTERING BASE (WRD-2100)

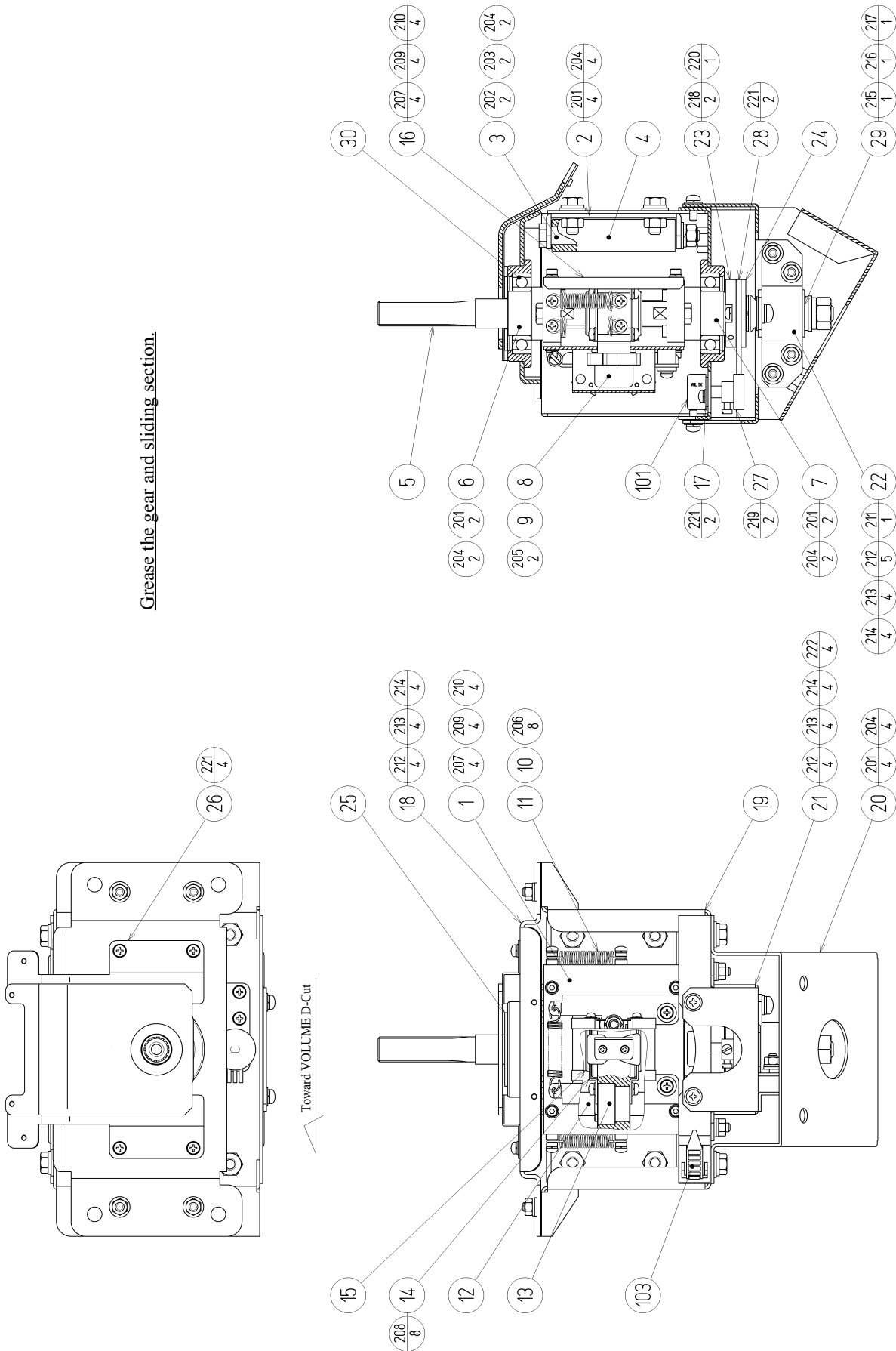
(D-2/2)

ITEM NO.	PART NO.	DESCRIPTION
1	WRD-2101	FRONT COVER
2	WRD-2102	CENTERING ARM L
3	WRD-2103	CENTERING ARM R
4	WRD-2104	SW BRKT
5	WRD-2105	SPRING HOLD
6	100-5050	ROLLER BEARING 19
7	421-7226-12-91	STICKER L LONG
8	421-7226-21-91	STICKER U LONG
101	370-5232	PHOTO SENSOR OMT-01DS
102	280-0419	HARNESS LUG
201	000-P00410-S	M SCR PH W/S M4 X 10
202	060-F00400	FLT WSHR M4
203	050-U00300	U NUT M3
204	060-S00300	SPR WSHR M3
205	060-F00300	FLT WSHR M3
206	050-U00600	U NUT M6
207	000-P00312-W	M SCR PH W/FS M3 X 12
209	050-H00300	HEX NUT M3
210	000-P00408	M SCR PH M4 X 8
211	060-S00400	SPR WSHR M4
301	WRD-60003	WH CENTERING MECHA01

④ ASSY HANDLE MECHA (WRD-2000)

(D-1/3)

Grease the gear and sliding section.



④ ASSY HANDLE MECHA (WRD-2000)

(D-2/3)

ITEM NO.	PART NO.	DESCRIPTION
1	WRD-2100	ASSY CENTERING MECHA
2	WRD-2001	STOPPER BRKT
3	WRD-2002	STOPPER SHAFT
4	WRD-2003	STOPPER ROT
5	WRD-2004	MAIN SHAFT
6	WRD-2005	SHAFT HOLDER UPPER
7	WRD-2006	SHAFT HOLDER LOWER
8	WRD-2007	SW SHADE
9	WRD-2009	HOLD CAM
10	WRD-2010	SPRING SUS
11	WRD-2011	SPRING HOOK
12	WRD-2012	GUIDE SHAFT
13	WRD-2013	GUIDE BLOCK
14	WRD-2014	STOPPER HOLDER
15	WRD-2015	STOPPER PP
16	WRD-2016	REAR COVER
17	WRD-2017	VR BRKT
18	WRD-2018	MECHA COVER
19	WRD-2019	MECHA BASE
20	WRD-2020	BASE BRKT
21	WRD-2021	ROSTA BASE
22	WRD-2022	ROSTA HOLDER
23	WRD-2023	GEAR BASE
24	WRD-2024	GEAR NUT PLATE
25	WRD-2025	HIDE PLATE
26	WRD-2026	TOP COVER
27	601-6555	GEAR Z=30 M=0.75
28	601-6450	GEAR 110
29	601-10999	TORSION RUBBER KURASHIKI 18 X 30
30	100-5071	BEARING 30
101	220-5373	VOL CONT B-5K
102	310-5029-F20	SUMITUBE F F 20MM
103	280-5009	CORD CLAMP 21

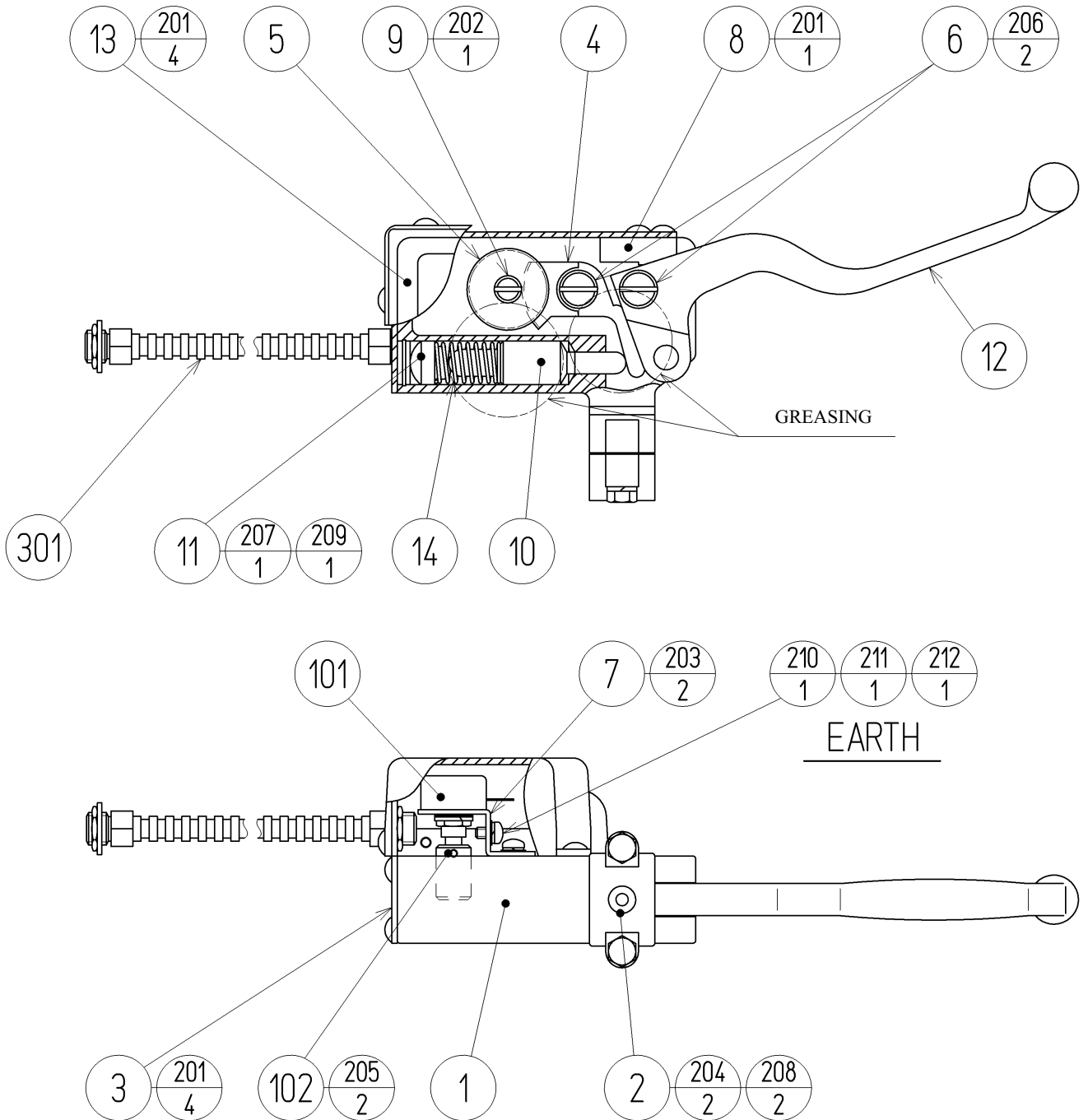
④ ASSY HANDLE MECHA (WRD-2000)

(D-3/3)

ITEM NO.	PART NO.	DESCRIPTION
201	030-000820-S	HEX BLT W/S M8 X 20
202	050-H00800	HEX NUT M8
203	060-S00800	SPR WSHR M8
204	060-F00800	FLT WSHR M8
205	000-P00416-W	M SCR PH W/FS M4 X 16
206	000-P00420-S	M SCR PH W/S M4 X 20
207	029-0427	HEX SKT H CAP SCR M4 X 10
208	000-P00408-W	M SCR PH W/FS M4 X 8
209	060-S00400	SPR WSHR M4
210	060-F00400	FLT WSHR M4
211	000-P00612-S	M SCR PH W/S M6 X 12
212	060-F00600	FLT WSHR M6
213	060-S00600	SPR WSHR M6
214	050-U00600	U NUT M6
215	050-H01200	HEX NUT M12
216	060-F01200	FLT WSHR M12
217	060-S01200	SPR WSHR M12
218	028-C00412-P	SET SCR CH CUP P M4 X 12
219	028-C00406-P	SET SCR CH CUP P M4 X 6
220	065-S025S0-Z	STP RING BLK 0Z S25
221	000-P00412-W	M SCR PH W/FS M4 X 12
222	000-P00512-W	M SCR PH W/FS M5 X 12
301	WRD-60004	WH HANDLE MECHA01

⑤ ASSY BRAKE MECHA (WRD-2550)

(D-1/2)



SCREW, NUT FASTENING TORQUE TO BE

M4 : 1.8 N•m

M6 : 7.3 N•m

Grease the gear and sliding section.

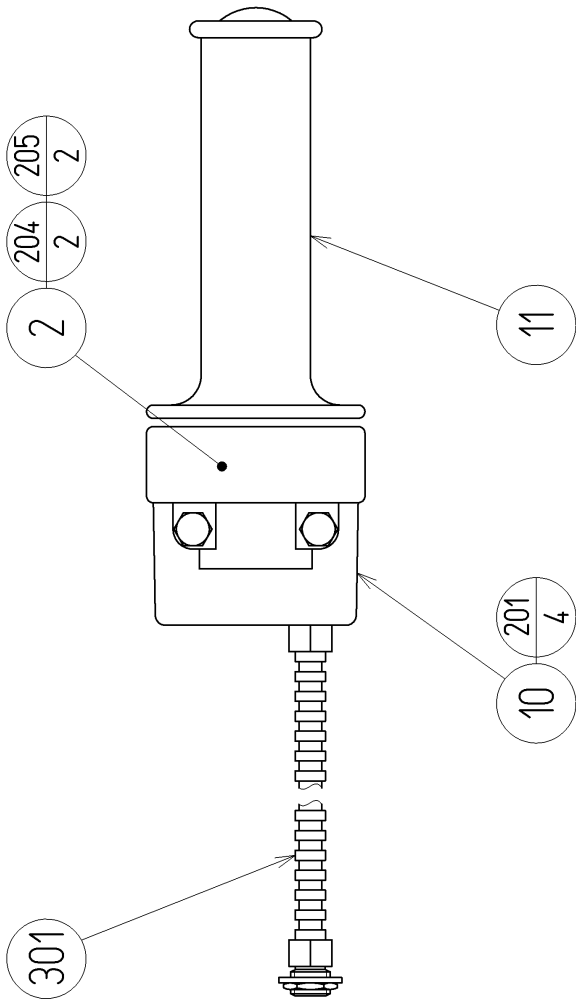
⑤ ASSY BRAKE MECHA (WRD-2550)

(D-2/2)

ITEM NO.	PART NO.	DESCRIPTION
1	HLD-2501	BRAKE MASTER CASE
2	HLD-2502	MASTER CASE HOLDER
3	HLD-2503	MASTER CASE COVER
4	HLD-2504	BRAKE GEAR
5	HLD-2505	IDOL GEAR
6	HLD-2506	PIVOT SHAFT
7	HLD-2507	VR BRKT
8	HLD-2508	LEVER STOPPER
9	HLD-2509	IDOL GEAR SHAFT
10	WRD-2551	MASTER PISTON
11	280-6619	RUBBER FOOT T 3G
12	HLD-2512	BRAKE LEVER
13	HLD-2513	VR COVER
14	HLD-2514	RETURN SPRING
101	220-5484	VOL CONT B-5K OHM
102	601-7944	GEAR 15
103	310-5029-F20	SUMITUBE F F 20MM
104	280-5275-SR10	CORD CLAMP SR10
201	000-T00408-0B	M SCR TH BLK M4 X 8
202	050-C00400-3B	CAP NUT TYPE3 BLK M4
203	000-P00408-W	M SCR PH W/FS M4 X 8
204	030-000620-SB	HEX BLT W/S BLK M6 X 20
205	028-A00306-P	SET SCR HEX SKT CUP P M3 X 6
206	FAS-500015	CAP NUT BLK M6
207	065-S016H0-Z	STP RING BLK OZ H16
208	068-441616	FLT WSHR 4.4-16 X 1.6
209	060-F00600-0B	FLT WSHR BLK M6
210	000-P00408	M SCR PH M4 X 8
211	060-S00400	SPR WSHR M4
212	060-F00400	FLT WSHR M4
301	WRD-60006	WH BRAKE MECHA01

⑥ ASSY THROTTLE (WRD-2600)

(D-1/2)

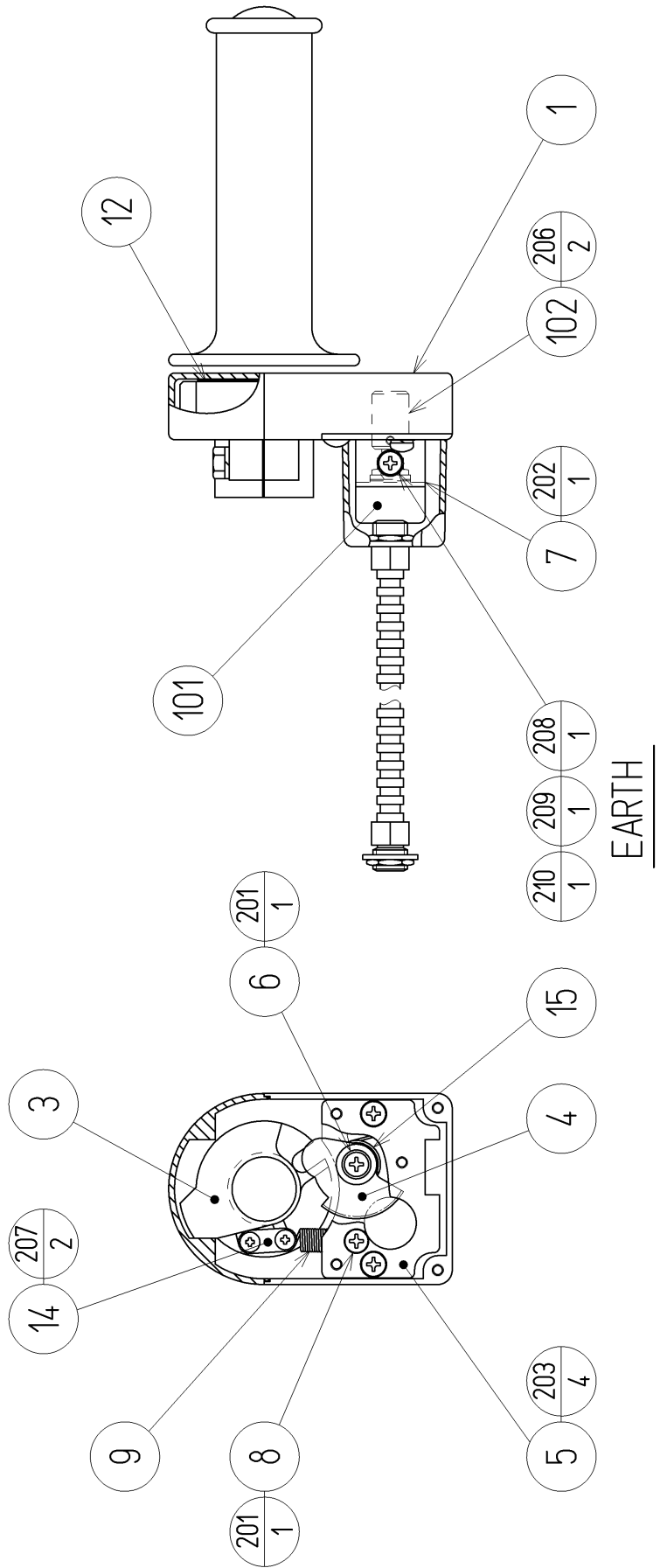


SCREW FASTENING TORQUE TO BE

M3 : 0.75 N•m

M4 : 1.8 N•m

Grease the gear section.



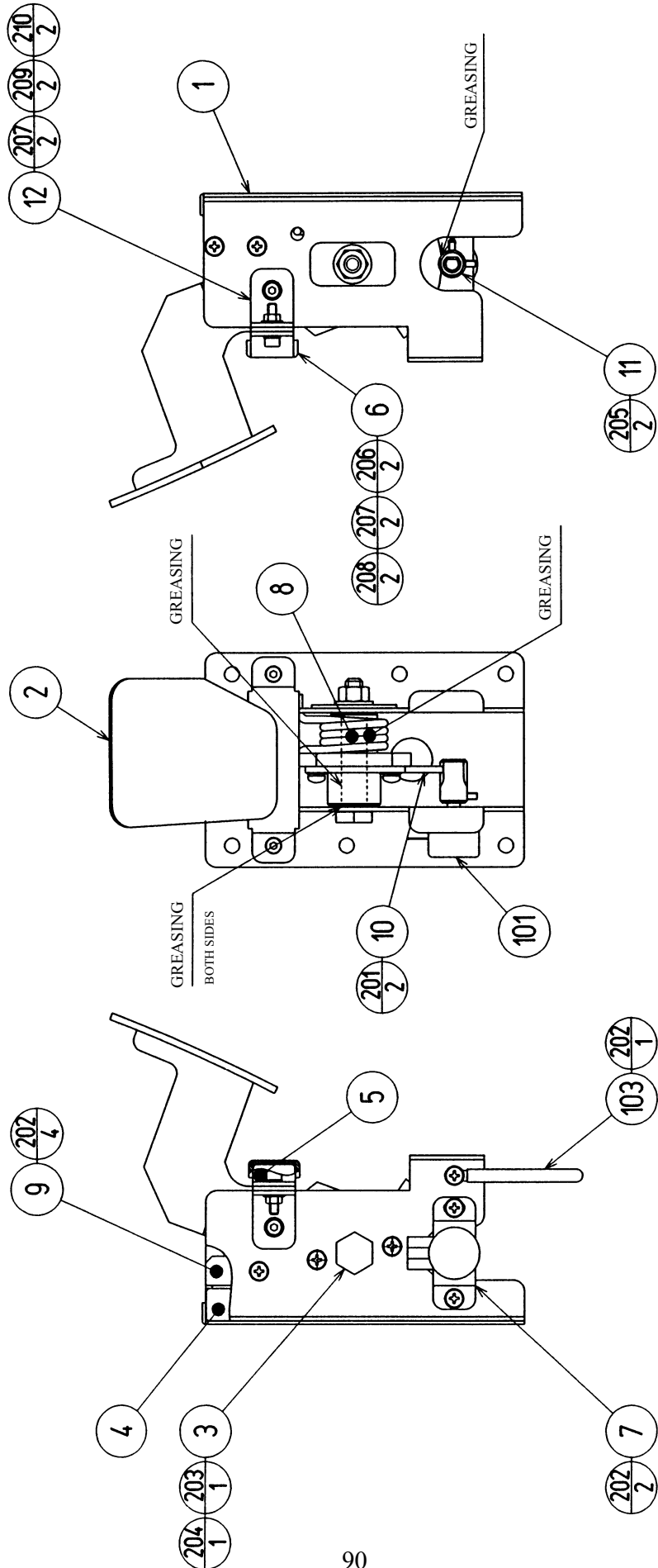
⑥ ASSY THROTTLE (WRD-2600)

(D-2/2)

ITEM NO.	PART NO.	DESCRIPTION
1	HLD-2601	THROTTLE CASE LOWER
2	HLD-2602	THROTTLE CASE UPPER
3	HLD-2603	INNER GRIP
4	HLD-2604	ACCEL GEAR
5	HLD-2605	BASE PLATE
6	HLD-2606	ACCEL GEAR SHAFT
7	HLD-2607	ACCEL VR BRKT
8	HLD-2608	SPRING HOOK
9	HLD-2609	RETURN SPRING
10	HLD-2610	VR COVER
11	HLD-2611	ACCEL GRIP
12	HLD-2612	SLIDE PLATE
14	HLD-2613	SPRING STOPPER
15	HLD-2614	GEAR SPRING
101	220-5484	VOL CONT B-5K OHM
102	601-7944	GEAR 15
103	310-5029-F20	SUMITUBE F F 20MM
201	000-T00408-0B	M SCR TH BLK M4 X 8
202	000-P00408-W	M SCR PH W/FS M4 X 8
203	000-F00408	M SCR FH M4 X 8
204	030-000625-SB	HEX BLT W/S BLK M6 X 25
205	060-F00600-0B	FLT WSHR BLK M6
206	028-A00306-P	SET SCR HEX SKT CUP P M3 X 6
207	012-P00306	TAP SCR #2 PH 3 X 6
208	000-P00408	M SCR PH M4 X 8
209	060-S00400	SPR WSHR M4
210	060-F00400	FLT WSHR M4
301	WRD-60005	WH THROTTLE01

7 BRAKE UNIT (CTA-1650)

(D-1/2)

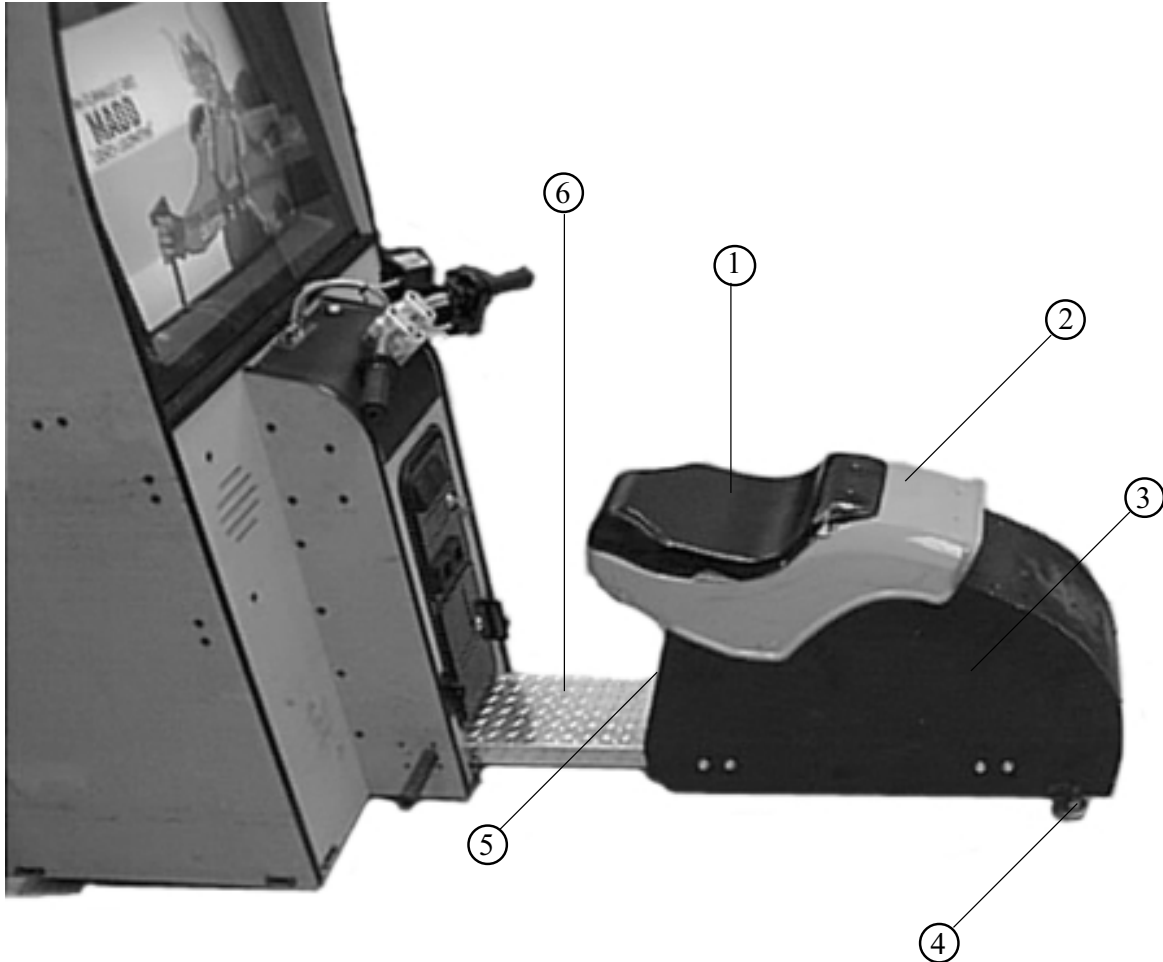


⑦ BRAKE UNIT (CTA-1650)

(D-2/2)

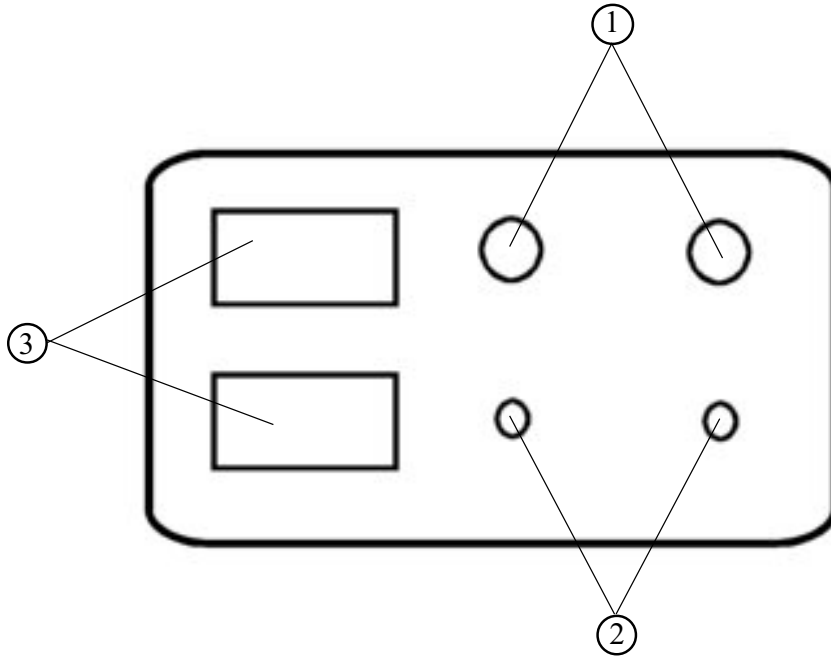
ITEM NO.	PART NO.	DESCRIPTION
1	CTA-1601	PEDAL BASE
2	CTA-1651	BRAKE PEDAL
3	CTA-1603	PEDAL SHAFT
4	CTA-1604	STOPPER BLOCK
5	CTA-1605	RUBBER PLATE
6	CTA-1606	RUBBER CASE
7	CTA-1607	VR BRKT
8	HLD-2805	TORSION SPRING
9	HLD-2808	RUBBER HOLDER
10	601-6450	GEAR 110
11	601-7944	GEAR 15
12	CTA-1608	SUPPORT BRKT
101	220-5373	VOL CONT B-5K
	220-5484	VOL CONT B-5K OHM
102	310-5029-F20	SUMITUBE F F 20MM
103	280-0419	HARNESS LUG
201	000-P00412-W	M SCR PH W/FS M4 X 12
202	000-P00408-W	M SCR PH W/FS M4 X 8
203	050-U00800	U NUT M8
204	060-F00800	FLT WSHR M8
205	028-A00308-P	SET SCR HEX SKT CUP P M3 X 8
206	020-000416-0Z	HEX SKT H CAP SCR BLK 0Z M4 X 16
207	060-S00400	SPR WSHR M4
208	050-F00400	FLG NUT M4
209	020-000408-0Z	HEX SKT CAP SCR BLK 0Z M4 X 8
210	060-F00400	FLT WSHR M4
301	CTA-60050	WIRE HARN BRAKE

⑧ SEAT CABI



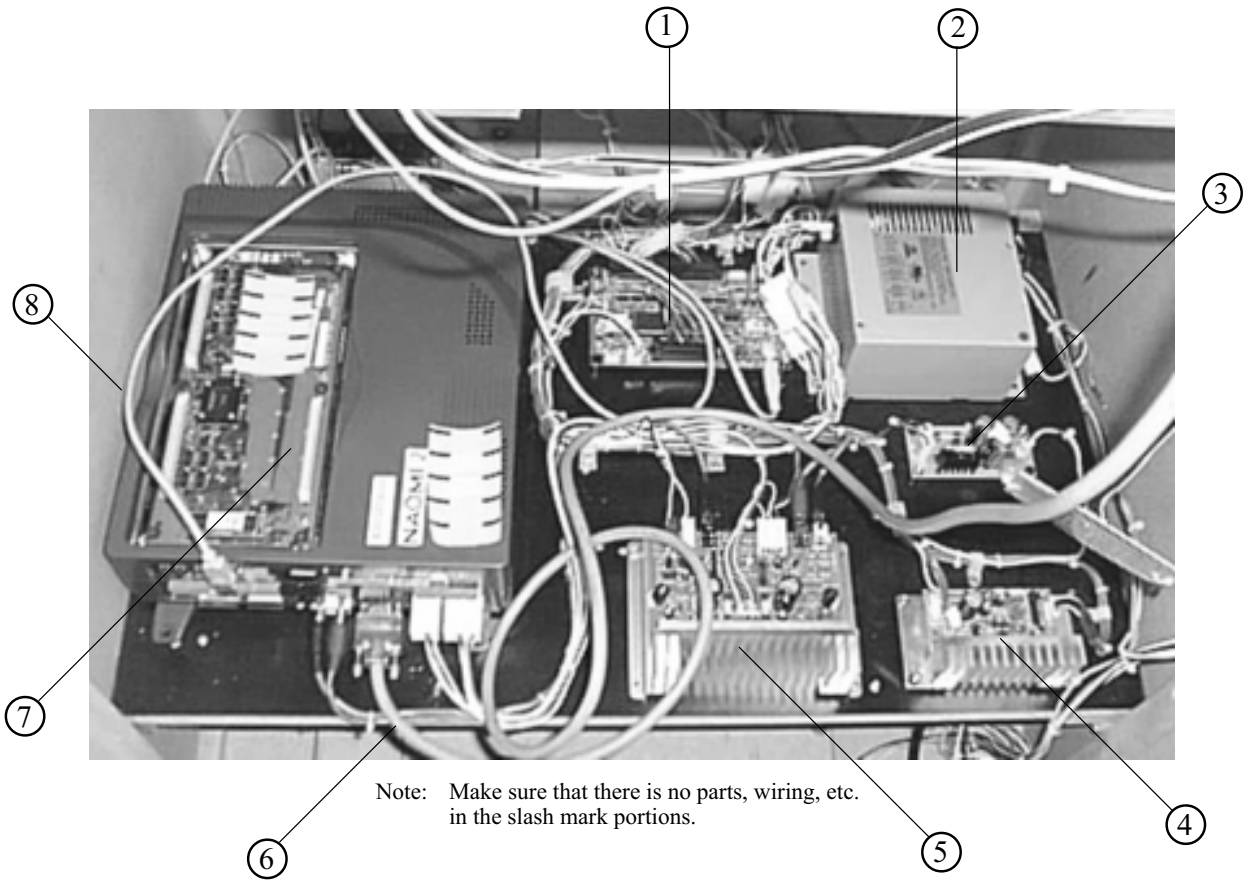
ITEM NO.	PART NO.	DESCRIPTION
1	999-1171	COVER SEAT VACUUM FORM
2	999-1172	FENDER VACUUM FORM
3	999-1173	S/A; SEAT & FENDER
4	999-0167	LEG LEVELER
5	999-1174	WOOD DOOR SEAT
6	999-1175	PLATE TREAD

⑨ SW UNIT (CTA-1160)



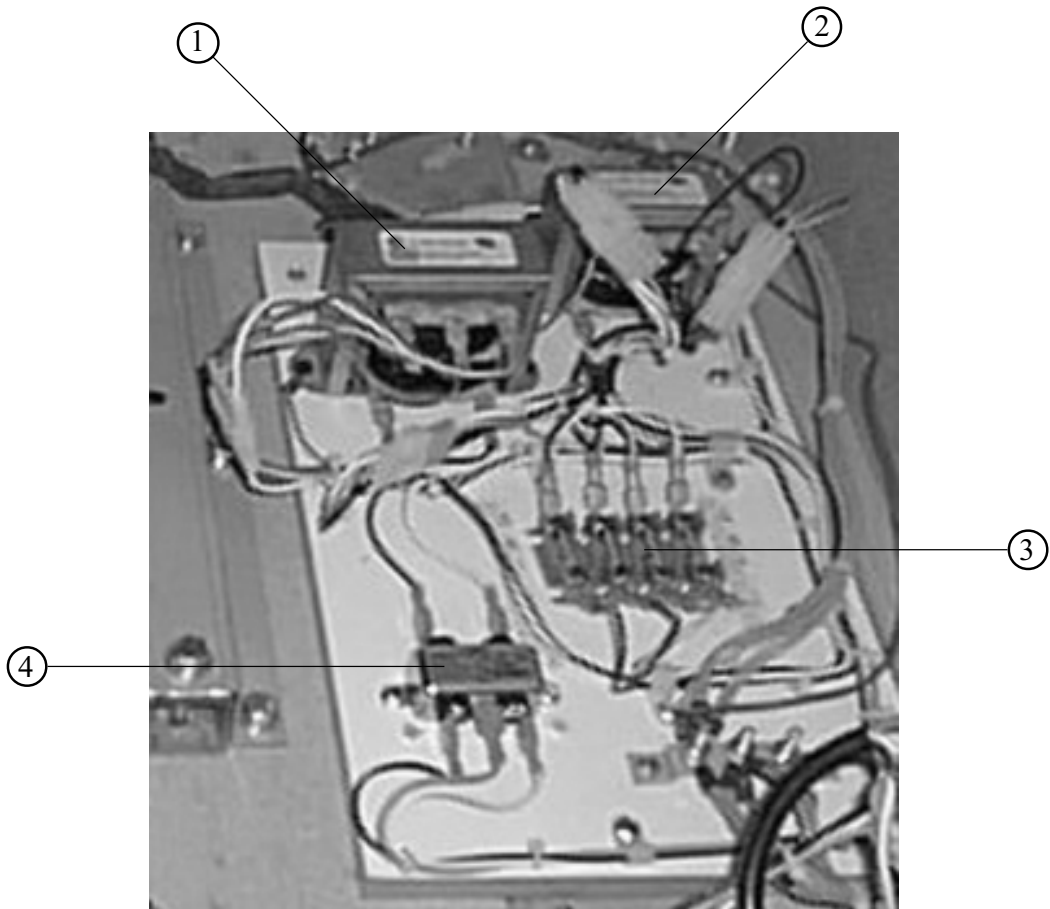
ITEM NO.	PART NO.	DESCRIPTION
1	LOC. PURCHASE	5 K POTENTIOMETER & VOLUME KNOB
2	LOC. PURCHASE	MOM. PUSH BUTTON SW
3	LOC. PURCHASE	COIN METER 6 VOLTS

⑩ ASSY MAIN BD



ITEM NO.	PART NO.	DESCRIPTION
1	837-13551-92	I/O CONTROL BD
2	400-5397-01	POWER SUPPLY FOR JVS
3	838-13759	RECT BD CTA
4	838-11651-01	PC BLOW PASS AMP w/LARGE HEAT SINK
5	838-13616	AUDIO POWER AMP 2 CH
6	600-7009-3000	ASSY RGB CABLE SUB 15P
7	840-0046D-01	ASSY CASE NAO2 WRD US
8	600-7141-200	USB CABLE

⑪ ASSY XFMR (NOB-4100)



Note: Make sure that there is no parts, wiring, etc. in the slash mark portions.

ITEM NO.	PART NO.	DESCRIPTION
1	998-0147	TRANSFORMER 12V HA MCI-4-06-7012
2	998-0146	TRANSFORMER MCI 4-06-8036
3	LOC. PURCHASE	FUSE BLOCK
4	LOC. PURCHASE	LINE FILTER 6 AMP