

Kangaroo

WIRING FOR "KANGAROO"

SOLDER FACE

PARTS FACE

-5V 28
+12V 27
+5V 26
+5V 25
TV. RED 24
TV. SYNC 23
GROUND 22
21
20
19
18
17
16
15
14
13
12
2P-PUNCH 11
2P-JUMP/UP 10
2P-RIGHT 9
8
1P-PUNCH 7
1P-JUMP/UP 6
1P-RIGHT 5
TABLE TYPE 4
3
2P-SELECT 2
GROUND 1

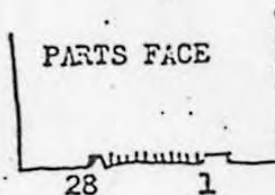
-5 V
+12V
+5V
+5V
TV. BLUE
TV. GREEN
GROUND

SCOUND CUT

2P-DOWN
2P-LEFT

1P-DOWN
1P-LEFT

COIN
1P-SELECT
GROUND



EXPLANATION OF "DIP SWITCH"

- DIP SW. NO.1 -"ON" -----5PCS. OF KANGAROO
- NO.2 -"OFF" -----SELL COME TO SECOND LINE
- NO.3 -"ON" -----2 COIN 1 CREDIT
- NO.4 -"OFF" -----1 COIN 2 CREDIT

FOR TABLE TYPE

FACTORY'S SPECIFICATIONS FOR "UP-RIGHT". SO IF YOU WANT TO CHANGE TO TABLE, PLS CONNECT NO4 (SOLDER FACE) ON PCB TO GROUND

Känguruli

M

Bestückungsliste

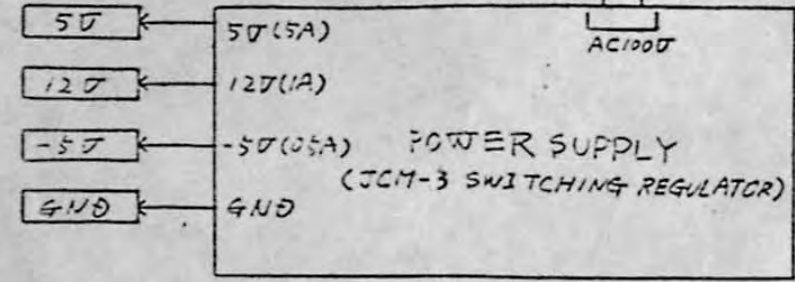
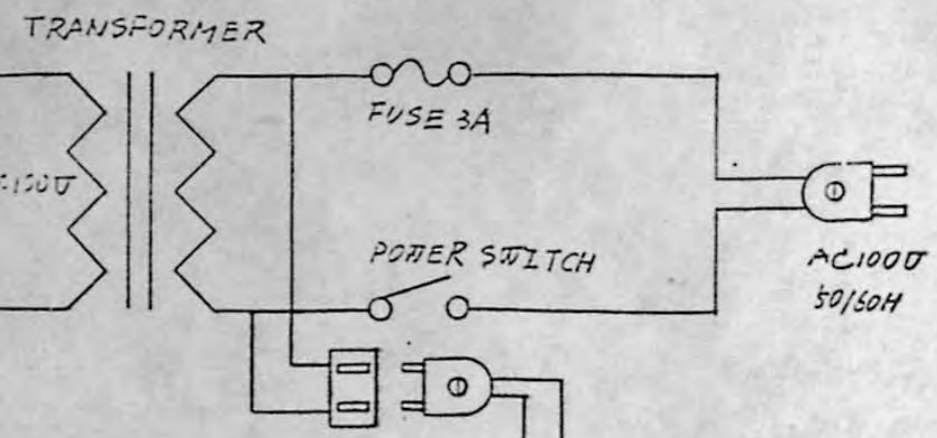
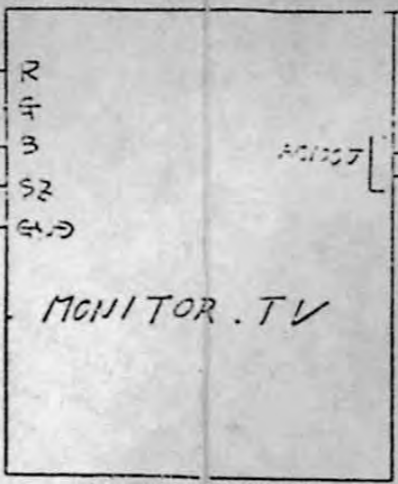
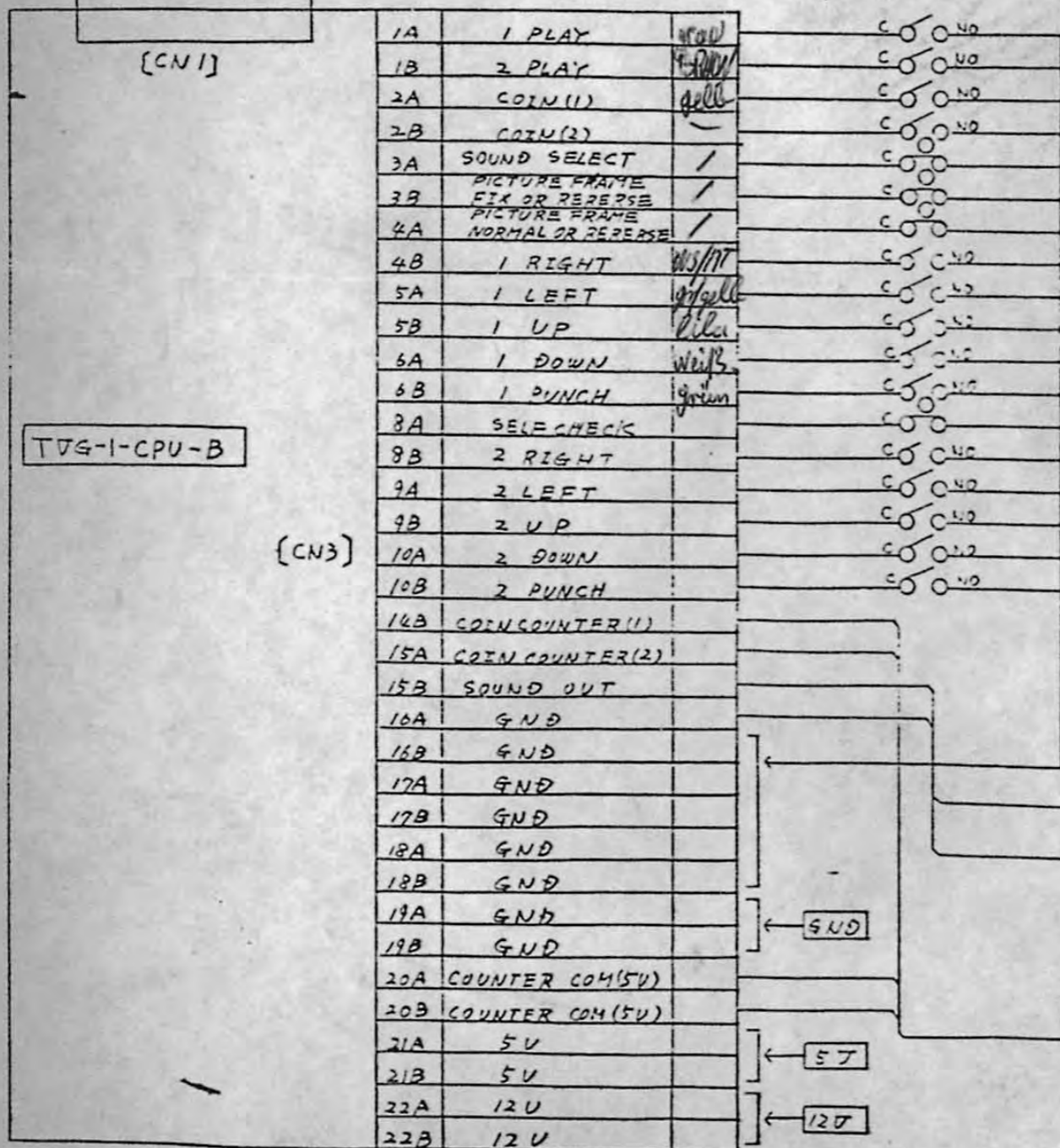
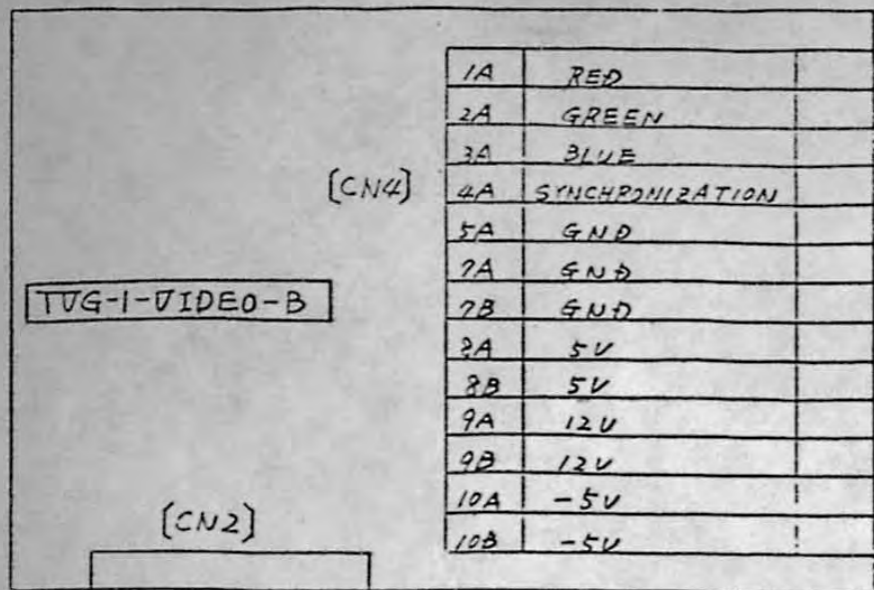
Lötbohle

1 P START	1	2 P START
Münze EIN	2	
GND	3	
GND	4	1 P RECHTS
1 P Links	5	1 P AUF
1 P AB	6	1 P TASTER 1
	7	
	8	
	9	
	10	
	11	
	12	
	13	
	14	
	15	Lautsprecher ⊕
GND	16	Lautsprecher ⊖
GND	17	GND
GND	18	GND
GND	19	GND
+ 5V	20	+ 5V
+ 5V	21	+ 5V
+ 12V	22	+ 12V
<small>Kleiner Platzwecker</small> 1 A - TV ROT	23	
2 A - TV GRÜN	24	
3 A - TV BLAU	25	
4 A - TV Synchron	26	
↓ GND	27	
GND	28	
10A GND		
+ 5V		
+ 12V		
- 5V		

NACHBAU!PARTSIDESOLDERSIDE

<u>PARTSIDE</u>		<u>SOLDERSIDE</u>	
1	1 Player Start	1	2 Player Start
2	Coin 1	2	Coin 2
3	GND	3	Table - GND
4	GND	4	1 Player Right
5	1 Player Left	5	1 Player Up
6	1 Player Down	6	1 Player Punch
7		7	
8	Test	8	2 Player Right
9	2 Player Left	9	2 Player Up
10	2 Player Down	10	2 Player Punch
11		11	
12		12	Sync
13	Blue	13	Green
14	Red	14	GND
15	Coin Counter 1	15	Coin Counter 2
16	Speaker	16	Speaker
17	-5V	17	-5V
18	+12V	18	+12V
19	+5V	19	+5V
20	+5V	20	+5V
21	GND	21	GND
22	GND	22	GND

Name	Klasse	Datum	Blatt
Königreich			
			Übung:
1 Masse	A Masse		
2 Masse	B Masse		
3 SVDC	C SVDC		
4 SVDC	D SVDC		
5 Lautspr.	E		
6 rechts PL2	F		
7 schlagen PL2	H		
8 links PL2	J		
9 links PL1	K rechts PL1		
10 ducken PL1	L springen PL1		
11 ducken PL2	M		
12 springen PL2	N schlagen PL1		
13 1 PL Start	P		
14 Credit 6x	R Credit 1x		
15 2 PL Start	S		
16 rot	T Grün		
17 blau	U Synchro		
18 Lautspr.	V -SVDC		
19	V 12VDC		
20	X Table		
21	Y Masse		
22	Z		



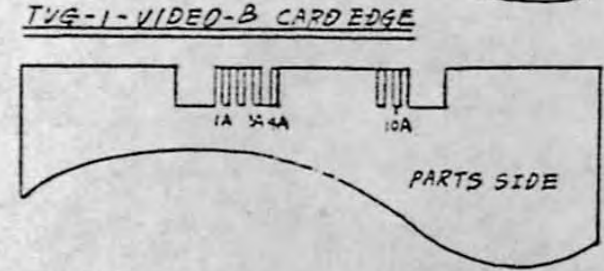
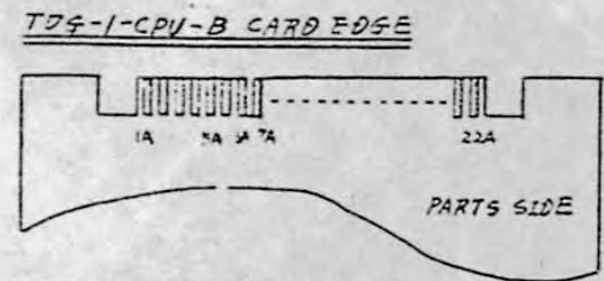
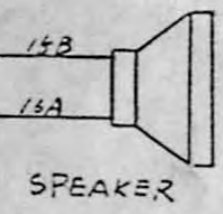
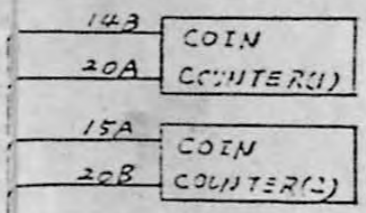
V=Violet
G=Green
B=Brown
R=Red
Y=Yellow
W=White
BL=Blue

(ATTN)

○ → MICRO SWITCHES

○ → TOGGLE SWITCHES OR JUMPER

CN1, CN2	FCM-7050050-A11/M	FCM-707B30A11/B
CN3	CDU CARD EDGE	22ST-22221-422
CN4	VIDEO CARD EDGE	22ST-21071-422



DATE	DESIGN	DESIGN	WORK	REVISION	OK
		56.3.16	56.3.10		
		水越	水越		

サノ電子株式会社

ADAPTER HARNESS WIRING DIAGRAM (REV. 1)

本体配線図

Werkstatt Kangaroo

JMBAU