



# OPERATOR'S MANUAL

## LET ME DANCE(LMD)

### User's Manual

[ English ]

2007. 01

K-RIVER Amusement.Lcd

[www.k-river.com](http://www.k-river.com)

# CONTENTS

1. <a href="#">Set-Up</a> .....	1
1-1. <a href="#">Place to set up</a> .....	4
1-2. <a href="#">Accessories</a> .....	4
1-3. <a href="#">Setup dongle</a> .....	4
1-4. <a href="#">Load blank CD</a> .....	5
1-5. <a href="#">Load CD Case</a> .....	5
1-6. <a href="#">Load papers (CD Covers)</a> .....	6
1-7. <a href="#">Power outlet cable to connect</a> .....	6
1-8. <a href="#">Output Test</a> .....	6
2. <a href="#">Options</a> .....	7
2-1. <a href="#">Dimension</a> .....	7
2-2. <a href="#">Electricity</a> .....	7
3. <a href="#">Parts</a> .....	8
3-1. <a href="#">External</a> .....	8
3-2. <a href="#">Internal</a> .....	8
3-3. <a href="#">PC System</a> .....	9
4. <a href="#">Diagram</a> .....	10
4-1. <a href="#">Block Diagram</a> .....	10
4-2. <a href="#">Operation</a> .....	10
4-3. <a href="#">Control Board</a> .....	11
4-4. <a href="#">CD Dispenser</a> .....	12
4-5. <a href="#">CD Case Dispenser</a> .....	14
4-6. <a href="#">Pin-Map</a> .....	16
5. <a href="#">PC &amp; Accessories set-up</a> .....	18
5-1. <a href="#">Windows XP</a> .....	18
5-2. <a href="#">Program</a> .....	22
5-3. <a href="#">Camera</a> .....	28
5-4. <a href="#">Printer</a> .....	30
6. <a href="#">S/W Program</a> .....	34
6-1. <a href="#">Screen Configuration</a> .....	34

6-2. <a href="#">Program MainApp.ini.File</a> (C:\LetmeDance\MainApp_1.22) .....	36
6-3. <a href="#">Error</a> .....	37

## 1. [Set-Up](#)

### 1-1. [Place to set up](#)

- 1) Flat and solid ground and few humidity place.
- 2) Do not install such places as steep variation of temperature and humidity, direct ray, strong light, intense heat exists.
- 3) All plugs should be put into grounded socket (outlet).
- 4) In case use extension wire for this machine, the total rating current of all devices should not exceed the rating of the extension wire.

### 1-2. [Accessories](#)

1) Operator's Manual	.....	1 EA
2) PC Main board driver CD	.....	1 EA
3) Camera driver CD	.....	1 EA
4) Printer driver CD	.....	1 EA
5) Power outlet cable	.....	1 EA
6) Blank CD	.....	50 EA
7) CD Case	.....	50 EA
8) Paper (CD Cover)	.....	100 EA

### 1-3. [Setup Dongle](#)

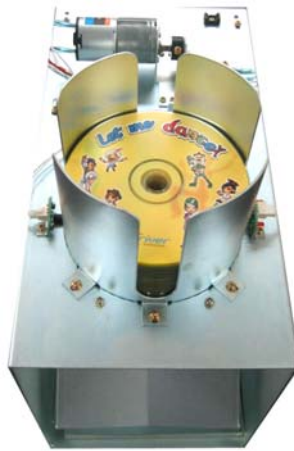
Plug in Dongle to be served with a program CD in Dongle into a PC USB port.

Make sure to install Dongle prior to LMD program.



1-4. [Load blank CD](#)

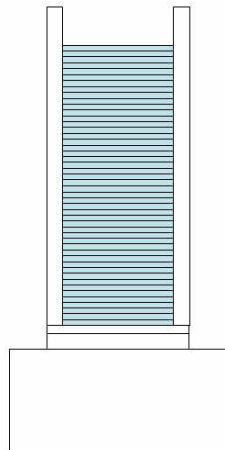
Load blank CD to a dispenser.



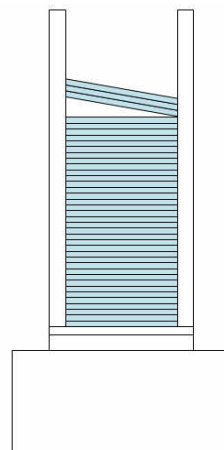
1-5. [Load CD Case](#)

Load CD Case properly below.

If you load them improperly, it may cause poor working.



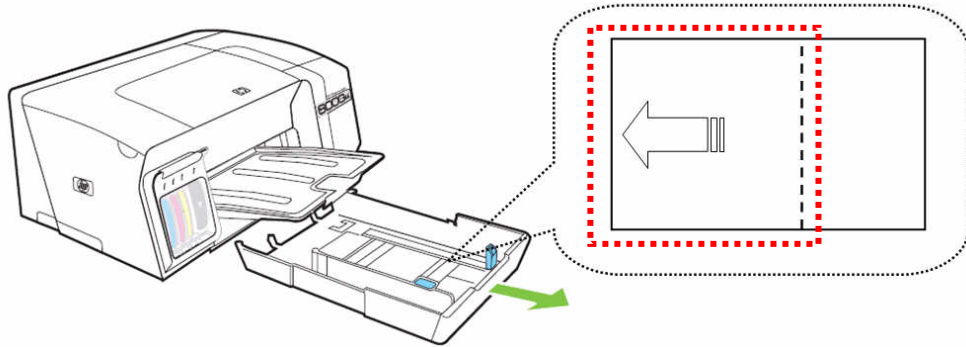
Correct



Wrong

1-6. [Load papers \(CD Covers\)](#)

- 1) Load papers into a printer as a illustration properly.
- 2) Max 150pcs papers availables.



1-7. [Power outlet cable to connect](#)

- 1) Connect the cable into the INLET right below LMD.
- 2) Turn on the Earth leakage circuit breaker inside. Check lights, fan, PC, Monitor, Control Board ON. No electricity, check input power outlet again and see a receptacle on.

1-8. [Output Test](#)

- 1) LMD turns on, program gets activated automatically. And LMD dispenses one CD for test automatically, too. (For your reference, see page 8,9)
- 2) Go into **Set Blue Screen** and see composition works properly. SBS is set-up on products output. SBS needs setting regarding a place to be installed. If operator is unhappy about the composition, set SBS again. (Ref.P29,30)
- 3) See the CD, CD Case, Papers comes out properly.

## 2. [Options](#)

### 2-1. [Dimension](#)

- 1) Size : 1630(W) X 850(D) X 2150(H) mm  
64.2(W) X 33.5(D) X 84.7(H) Inch
- 2) Weight : 250Kg / 552 lbs

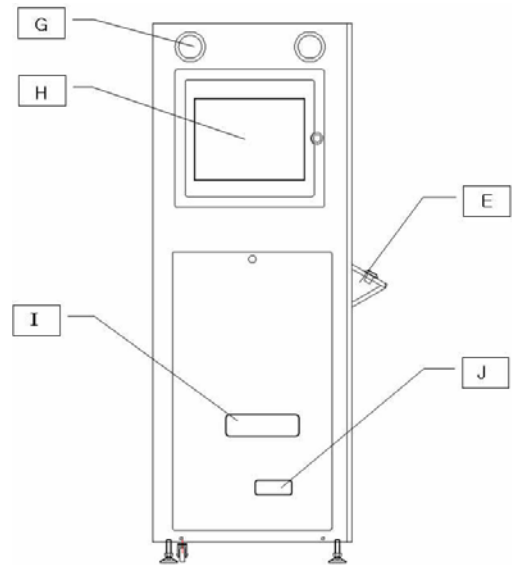
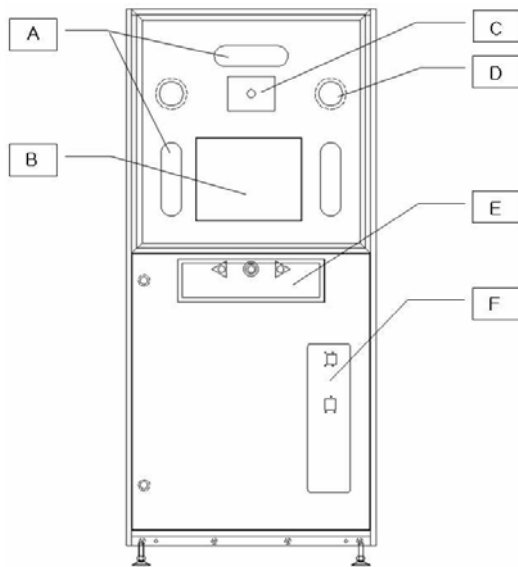


### 2-2. [Electricity](#)

- 1) Power supply : AC110/230V, 50~60Hz
- 2) Electric power : 350Watt

### 3. PARTS

#### 3-1. External

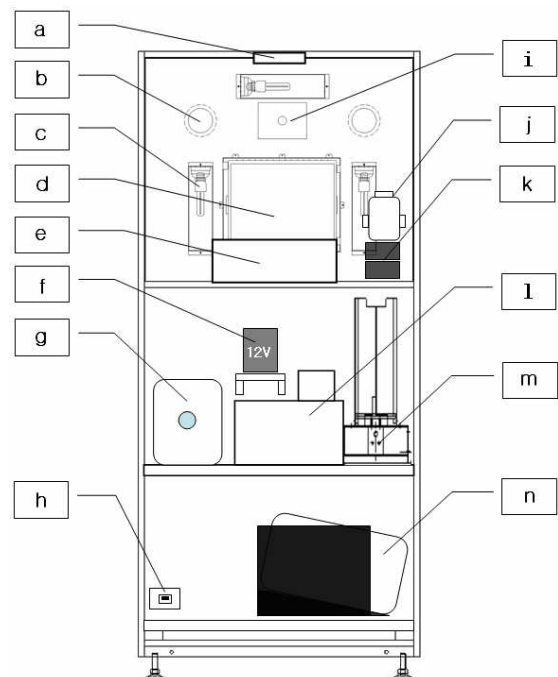


- A. Light (11W Lamp)
- B. 17"LCD Monitor #1
- C. Camera
- D. Speaker #1
- E. Play Button
- F. Coin/Bill acceptor

- G. Speaker #2
- H. 17"LCD Monitor #2
- I. Exit of CD, Case
- J. Exit of Photo

#### 3-2. Internal

- a. FAN
- b. Speaker #1
- c. Light (11W Lamp)
- d. 17"LCD Monitor #1
- e. PC
- f. SMPS (12V) + Control board
- g. Speaker #1 + Woofer
- h. Contact breaker
- i. Camera
- j. Monitor Splitter
- k. 17"LCDMonitor #1,2 Adaptor
- l. CD Dispenser
- m. CD case Dispenser
- n. Printer



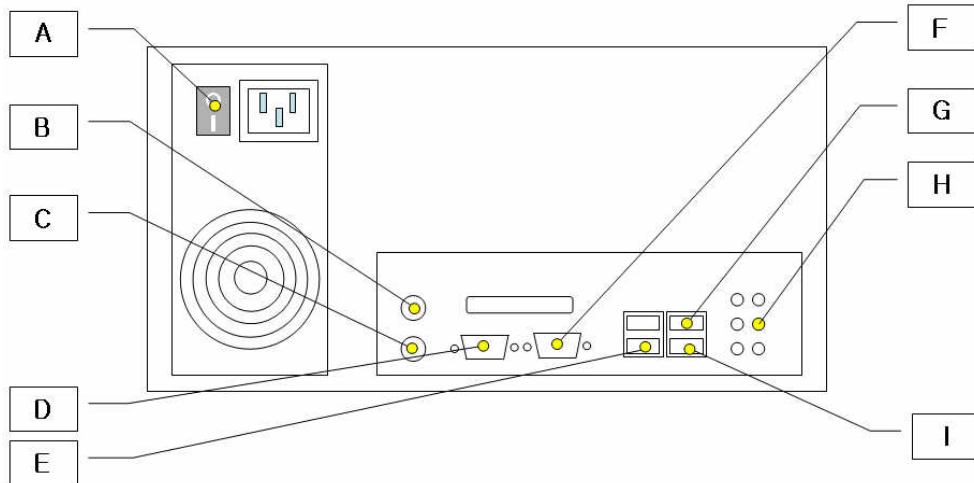


### 3-3. [PC System](#)

Follow this instruction on PC System installation.

\*If you change USB Ports of a camera and a printer to connect, you should install drivers again.

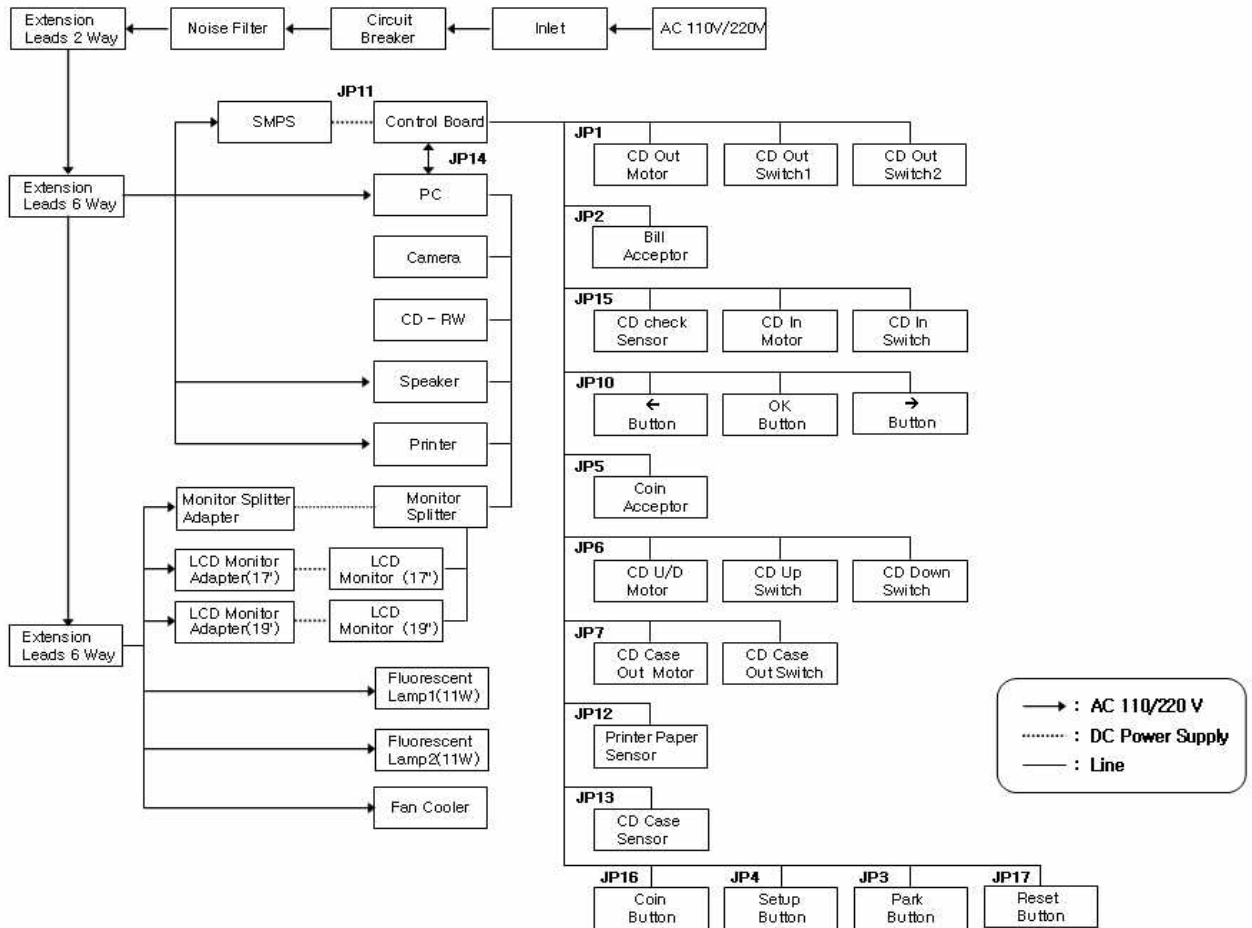
Don't change them and just follow below instruction.



- A. PC Power
- B. Mouse
- C. Keyboard
- D. Control Board
- E. Dongle
- F. LCD Monitor Splitter
- G. USB Camera
- H. Speaker
- I. Printer

## 4. [Diagram](#)

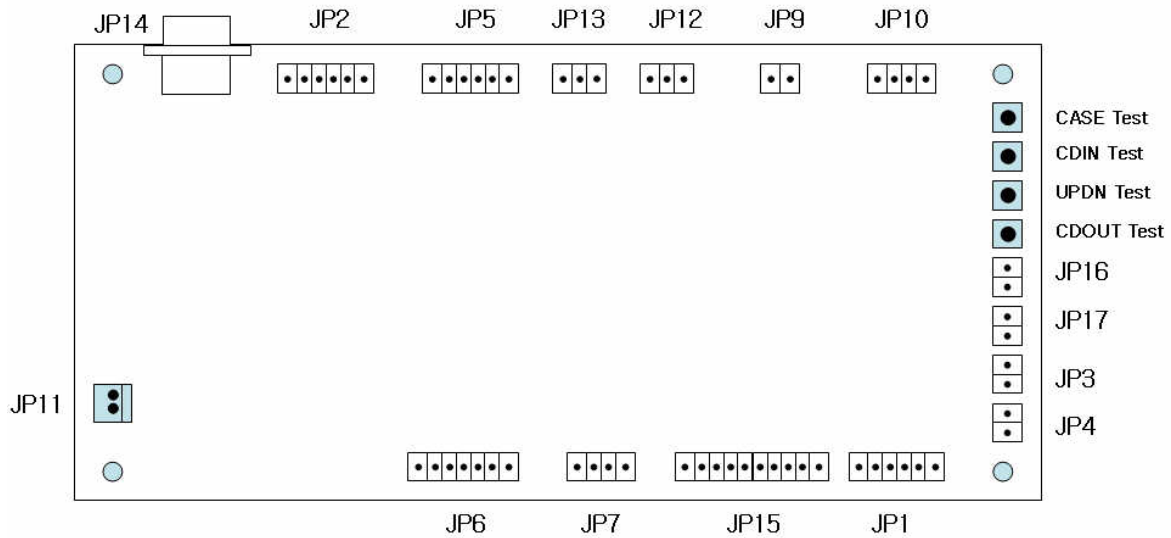
### 4-1. [Block Diagram](#)



### 4-2. [Operation](#)

- 1) Coin signal transferred thru Coin/Bill Acceptor. (JP2, JP5)
- 2) LMD program gets started with external buttons(←, OK, →). (J10)
- 3) CD Dispenser serves CD to CD R/W. (JP15)
- 4) LMD program is proceeded in order.
- 5) CD comes out of DC R/W after recording Music Video. (JP6)
- 6) Forward the CD from CD R/W to EXHIT. (JP1)
- 7) CD and CD Case come out. (JP7)

#### 4-3. Control Board



**JP1** : CD out motor : To move the CD which has a music video to exit.  
 \*On a poor CD happens, the motor gets it a poor CD out to the CD dispenser's bottom.  
 Not to the exit. When it comes to happening to record wrong, one more recording process will be done.

**JP2** : Bill : Connecting to a bill acceptor.

**JP3** Park Button : Terminating the PC.

**JP4** Setup Button : Changing configuration mode.

**JP5** COIN : Connecting to a coin acceptor.

**JP6** CD U/D Motor : Taking a CD tray out from CD R/W.

**JP7** Case motor : Dispensing a CD Case

**JP9** Print : Printer power on. ( Only for Epson printer available).

**JP10** S/W IN : Connected a external button(← OK →).

**JP11** DC Power in : Supplying "DC electric power(12V)" to a Control Board from SMPS.

**JP12** SS2 : Checking papers which a printer has or not. (Only for a Epson printer).

**JP13** SS1 : Checking CD Cases which a CD Case dispenser has or not.

**JP14** PC : Connecting a PC and a Control board.

**JP15** CD In Motor : Sending a CD to a CD R/W.

**JP16** Free Button : Sending a coin signal. (For free service or else)

**JP17** Reset Button : Reset

< Test Button > Testing dispenser's works

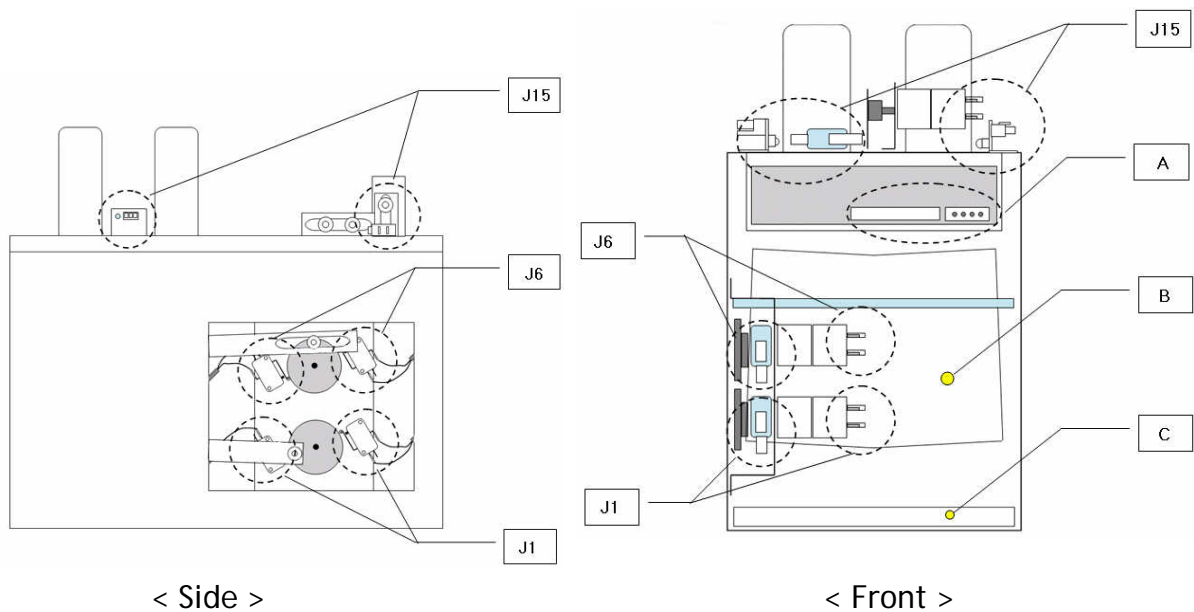
Take a test as follows. Program error happens not following in order.

- 1) Case Test : (JP7 performance test) Performing CD Case sampling one time.
- 2) CDIN Test : (JP15 performance test) Performing CD supplying test one time.
- 3) UPDN Test : (JP6 performance test. CD R/W doesn't work here.) Performing to a lift a CD from the CD R/W.
- 4) CD Out Test : (JP1 performance test) Performing a CD dispenser which dispatches a CD to move a exit properly.

4-4. [CD Dispenser](#)

CD Dispenser has a function to move a CD recorded as a music video CD to CD exit.

CD dispenser performs supplying and putting out a CD to an exit one time on starting LMD program or getting reset back a control board.



< A : CD R/W >

Recording music video to a CD supplied. It is connected with a PC.

< B : CD shelf to put out >

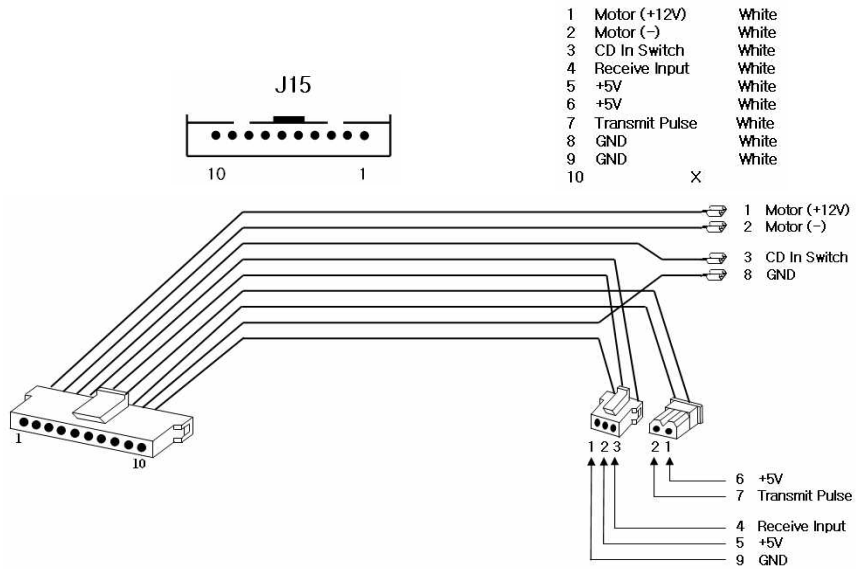
J1 makes the CD recorded to send a CD exit or C.

< C : CD Tray >

A poor CD or the CD taken for a test is sent to a CD tray.

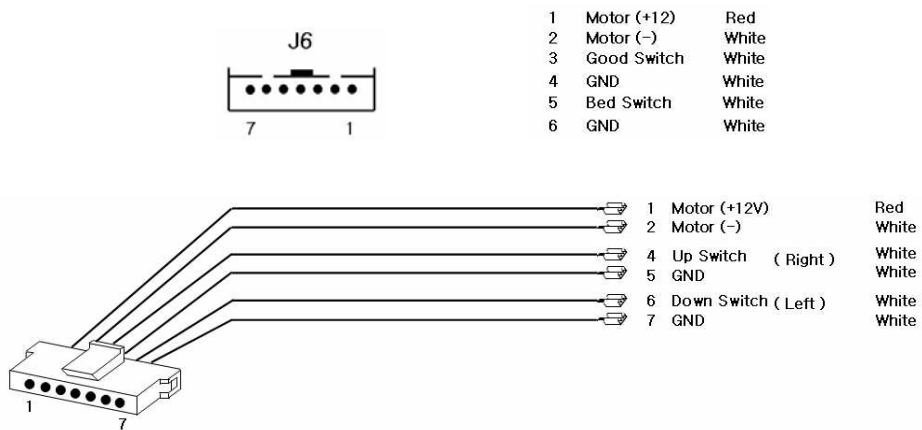
< J15 : CD In Motor >

Sensor checks a backlog of CDs and supplies a CD to a CD R/W on LMD gets started.  
 Lights on at the sensor LED with no CD.



< J6 : CD U/D Motor >

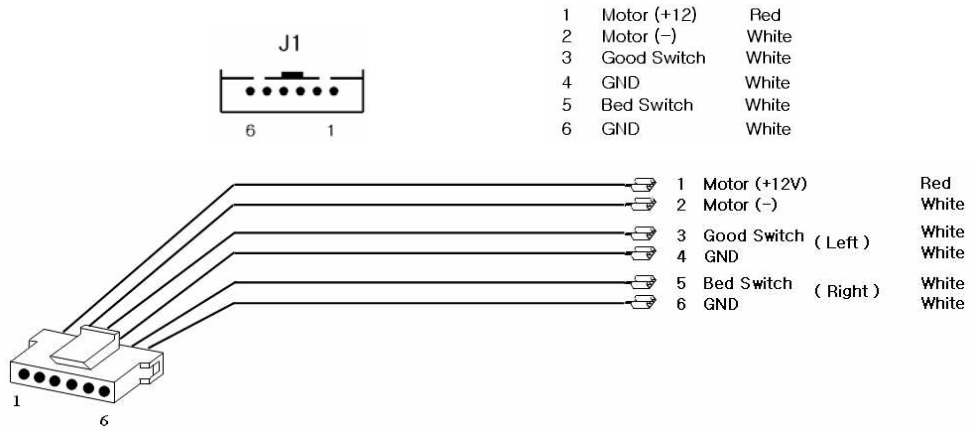
Lift up a CD which music video recorded from the CD R/W and it makes the CD to dispatch thru B.



< JP1 CD out Motor >

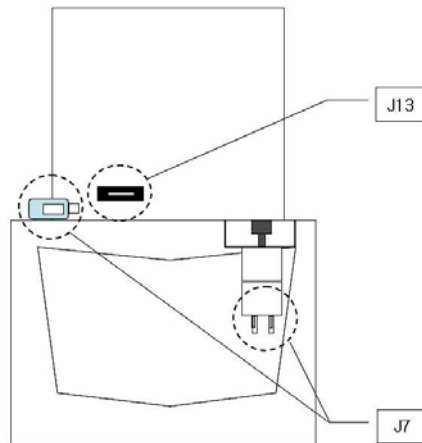
CD R/W makes the CD from J6 to send CD exit thru B.

B makes a proper CD with music video to move to an exit but a poor CD to send a bottom(C).



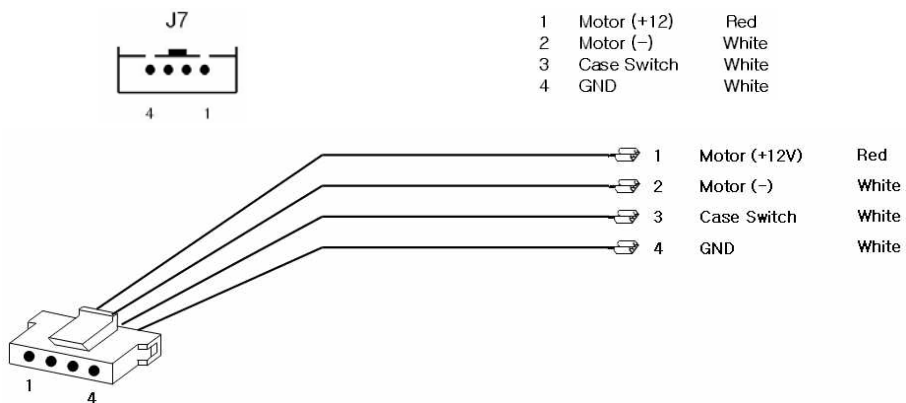
4-5. [CD Case Dispenser](#)

CD CASE Dispenser perceives CD case left and it sends a CD case to exit piece by piece.



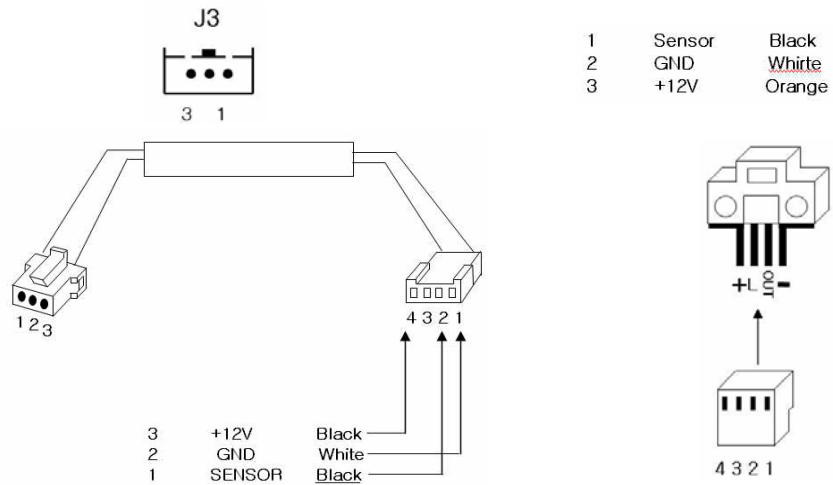
< JP7 Case Motor >

Case motor puts out a CD Case piece by piece concurrently a CD out.

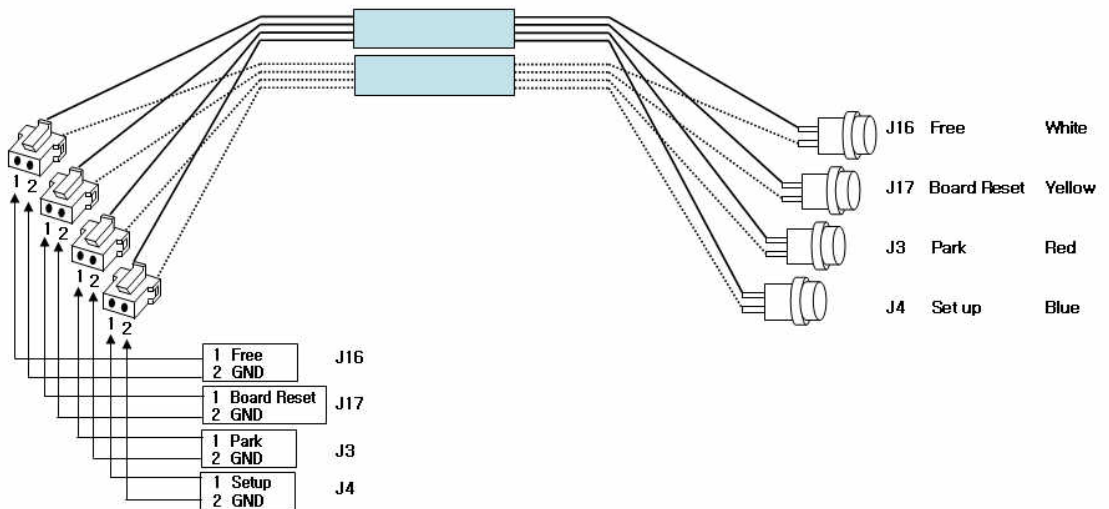


< JP13 Sensor1 >

JP13 Sensor1 perceives whether CD Case remains.

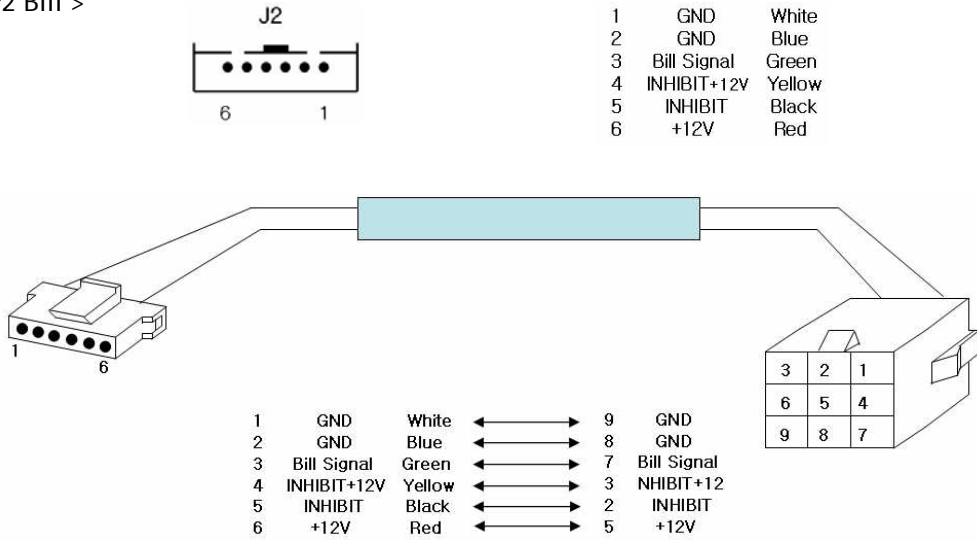


< JP3 Park Button, JP4 Setup Button, JP16 Coin Button, JP17 Reset Button >

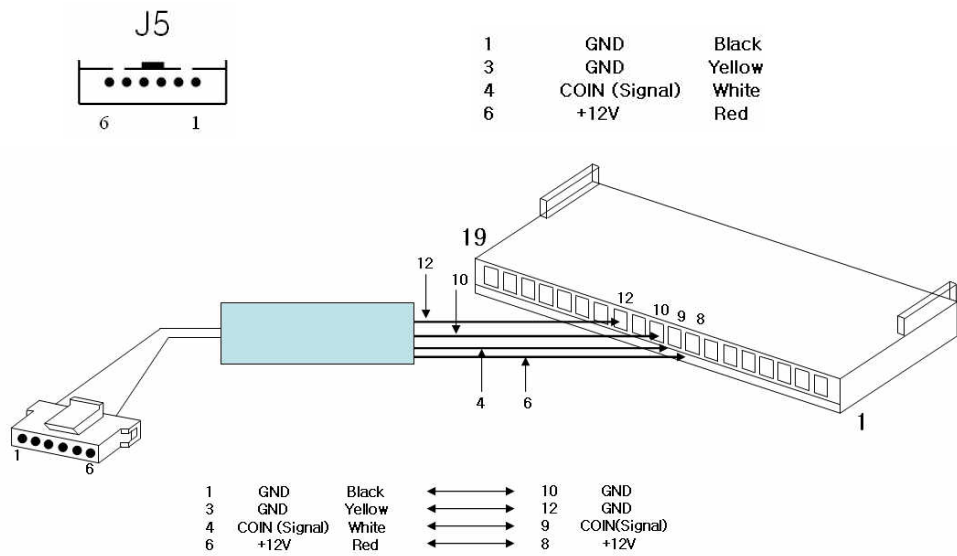


#### 4-6. Pin-Map

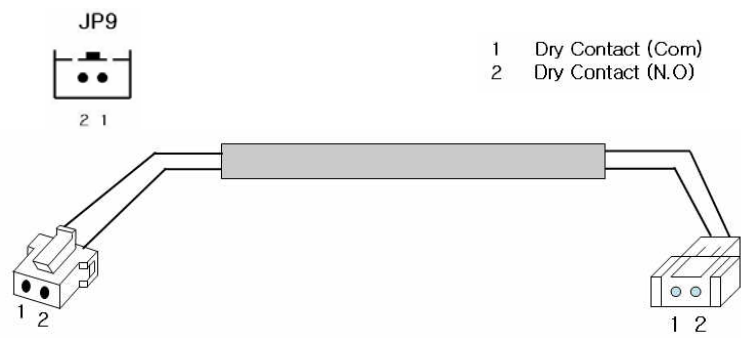
##### < JP2 Bill >



##### < JP5 Coin >

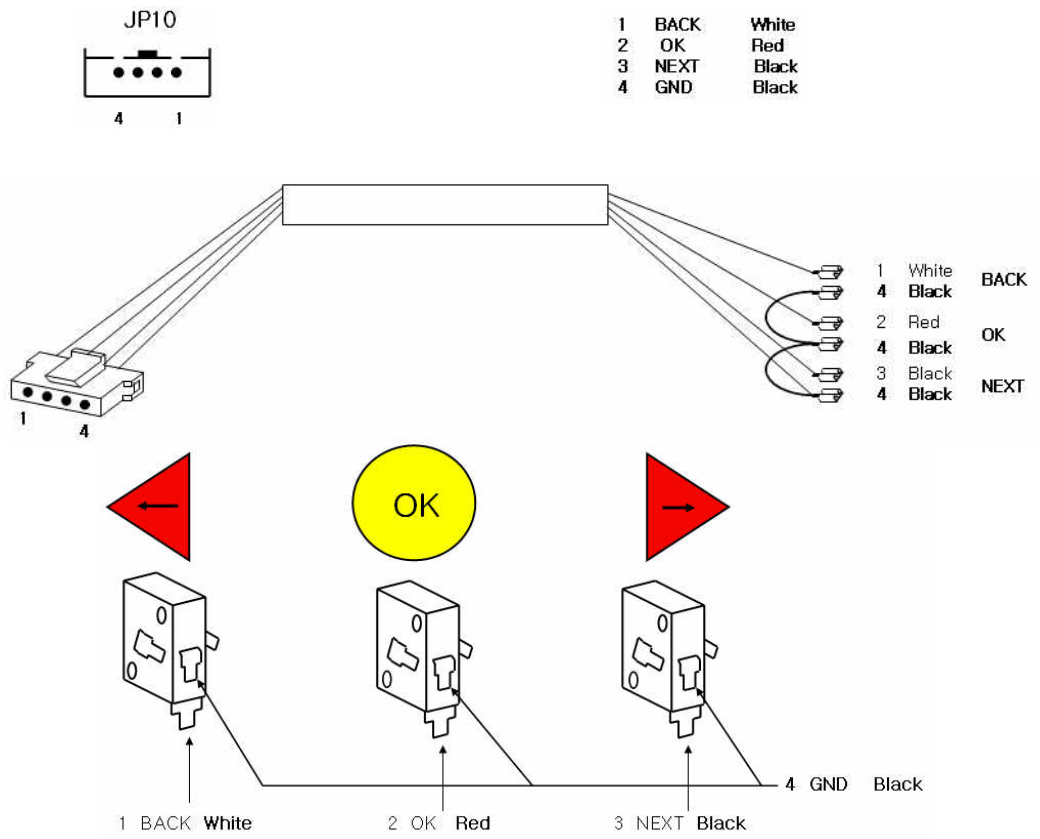


##### < JP9 Print >

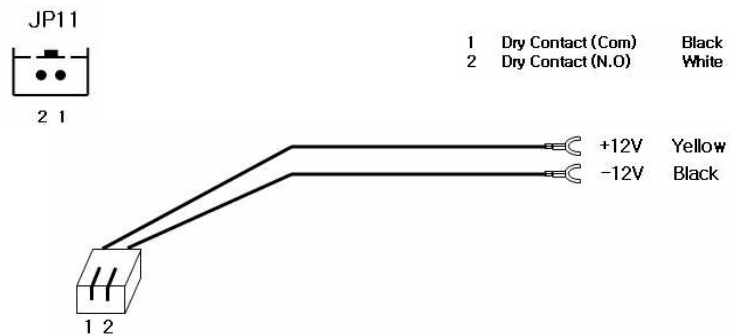




< JP10 S/W IN >



< JP11 DC Power >



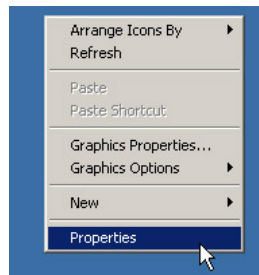
## 5. [PC & Accessories Set-Up](#)

Follow this instruction for program installation when you should format the PC or reinstall Window XP to the PC.

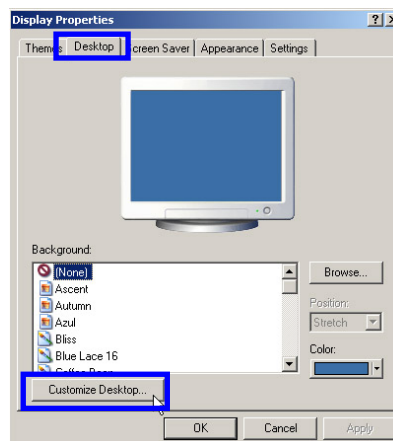
### 5-1. [Windows XP](#)

1) Desktop configuration.

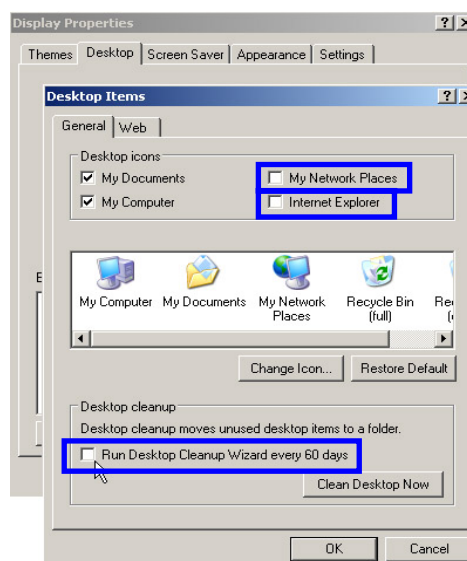
a) Press right on a mouse to go inside to register in desktop.



b) Click Customize Desktop after choosing Desktop in Display Properties.

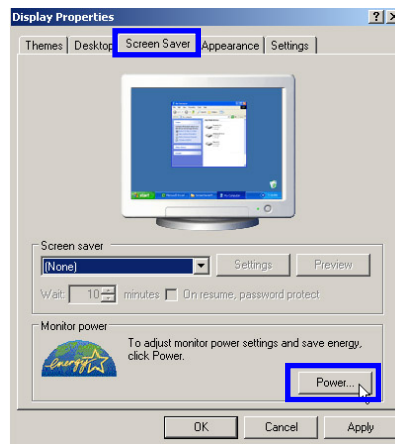


c) Unlick as below then pres OK

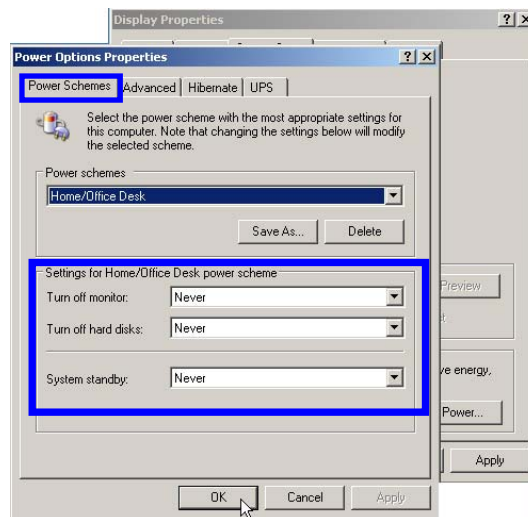


## 2) Set-Up Screen Saver

a) Click Power after choosing Screen Saver in the tap of Display Properties.



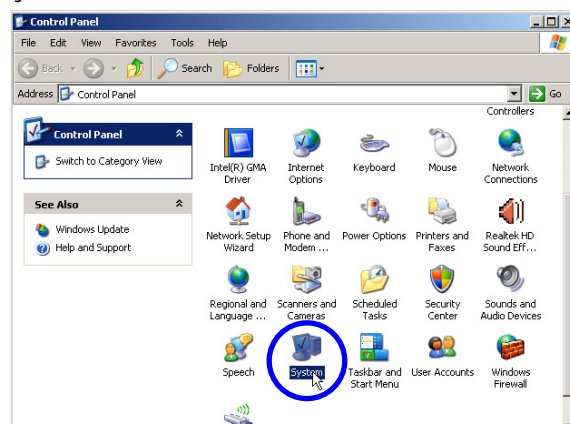
b) Select Power Schemes and choose "Never" as below. Then press OK.



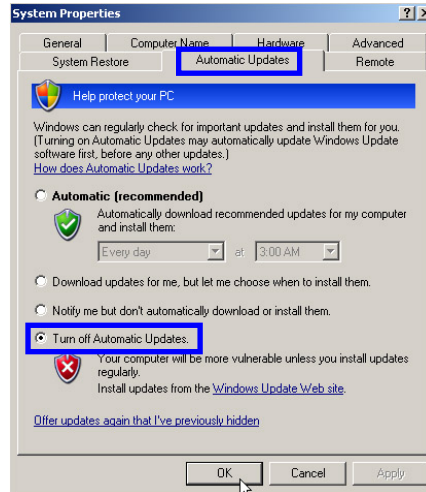
## 3) Set Auto Updates

a) Follow in order below then press System

Start → Settings → Control Panel → System



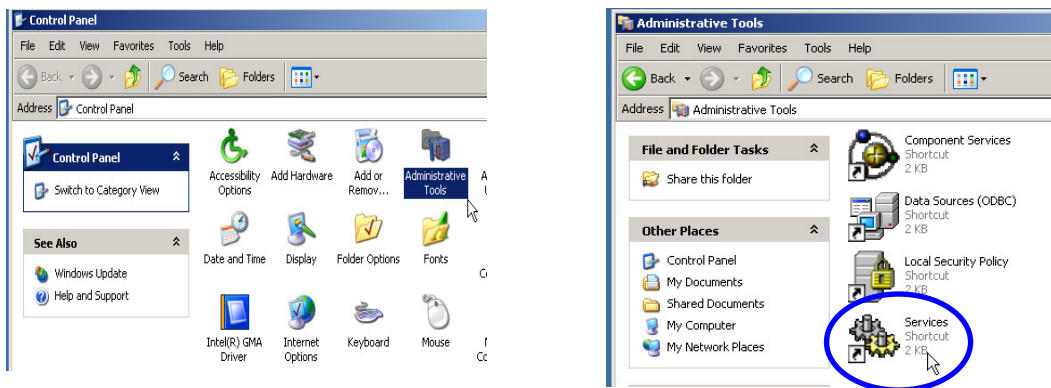
b) Select "Automatic Update" and click "Turn off Automatic Updates" Then press OK.



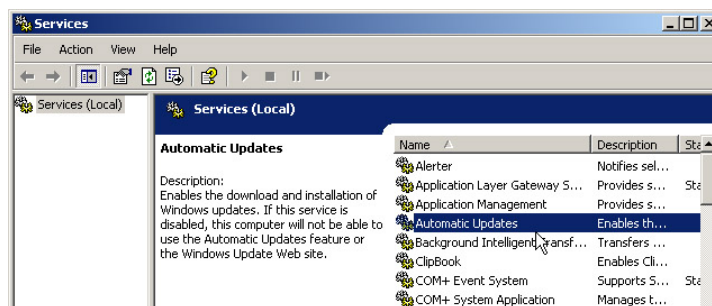
4) Set "Service" at "Administrative tools".

a) Click Services as follows.

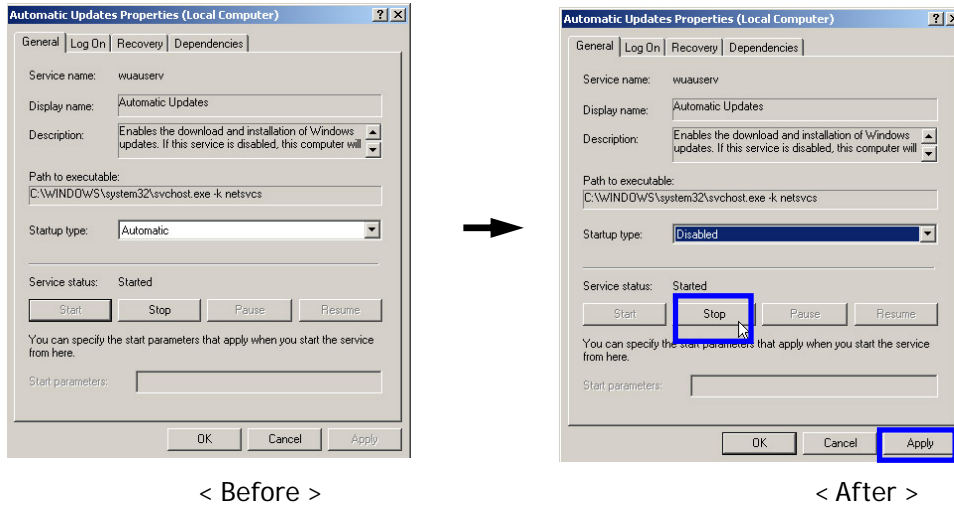
Start → Settings → Control Panel → Administrative Tools → Services



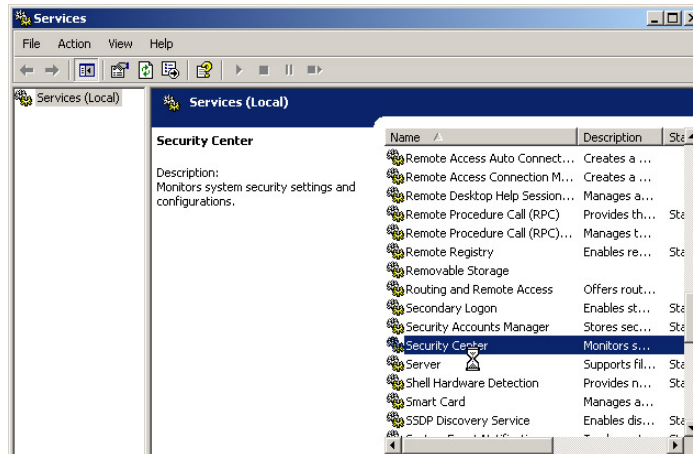
b) Double click "Automatic Updates"



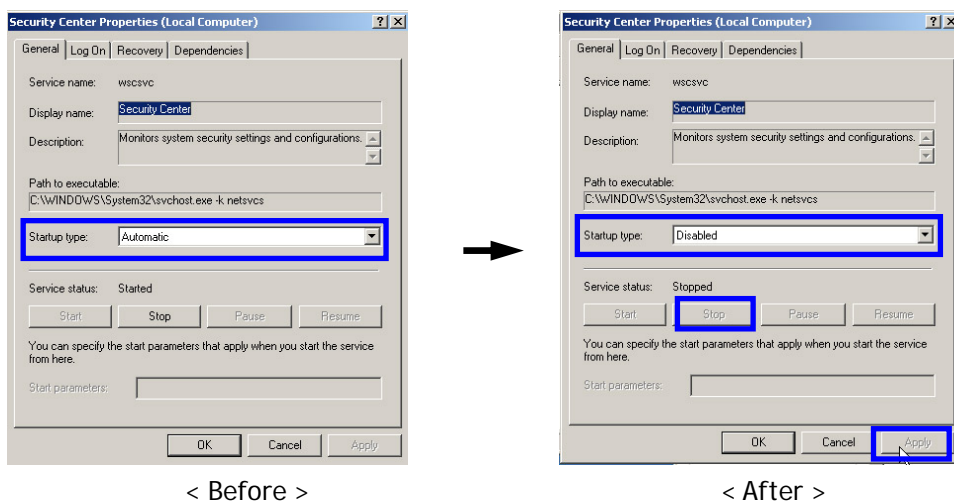
c) Change "Automatic" into "Disabled" in Startup type and press Stop. And then press Apply.



d) Double click "Security Center"

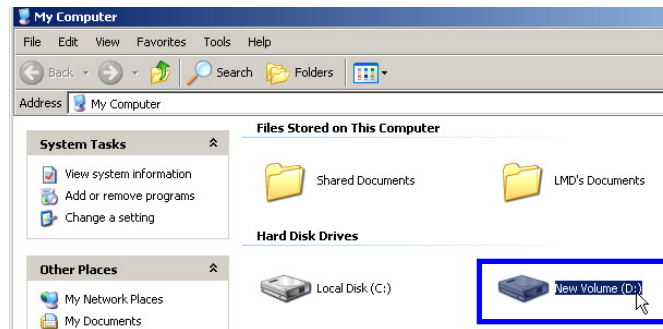


e) Change "Automatic" into "Disabled" in Startup type and press Stop. And then press Apply.



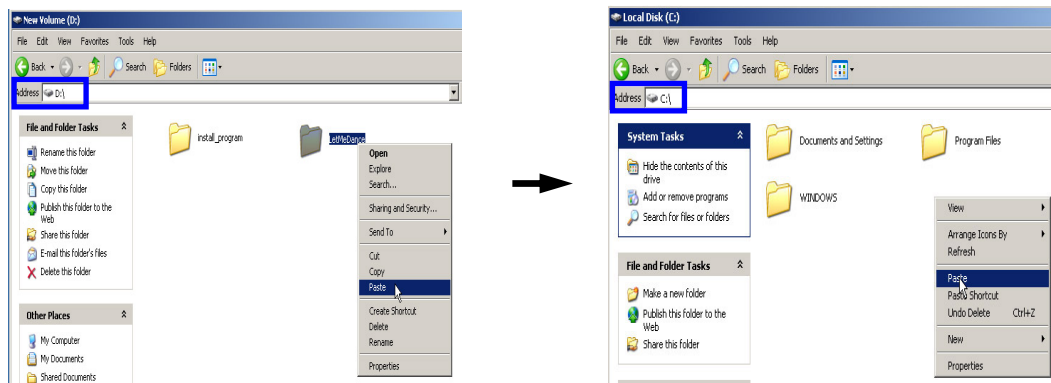
## 5-2. Program

Drivers for LMD installation are stored in D-drive as backup.

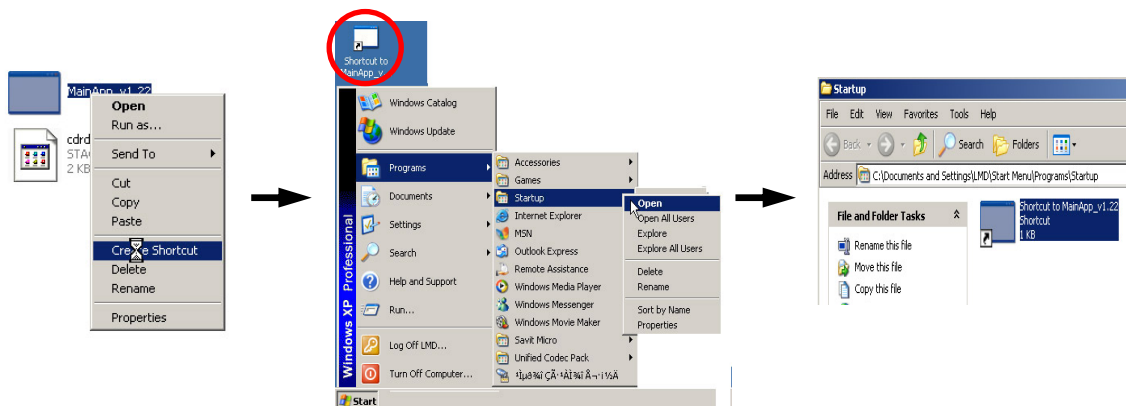


### 1) Program of LMD installation

a) Copy the LMD program in D: and paste it to C: below.



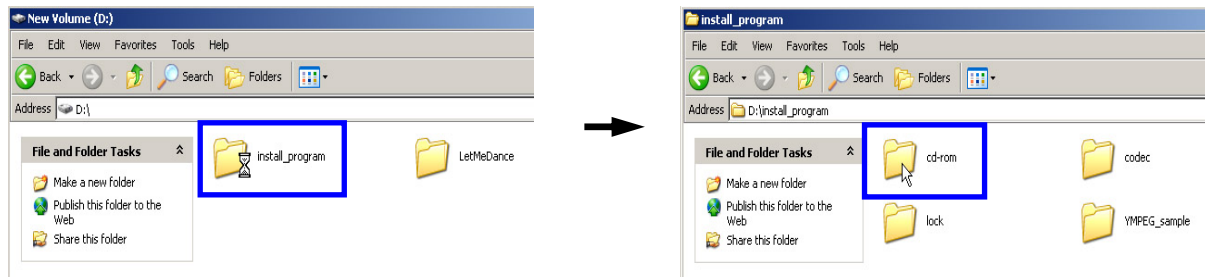
b) Go into the LMD program folder. Make shortcut file and copy them at Window desktop and Start menu.



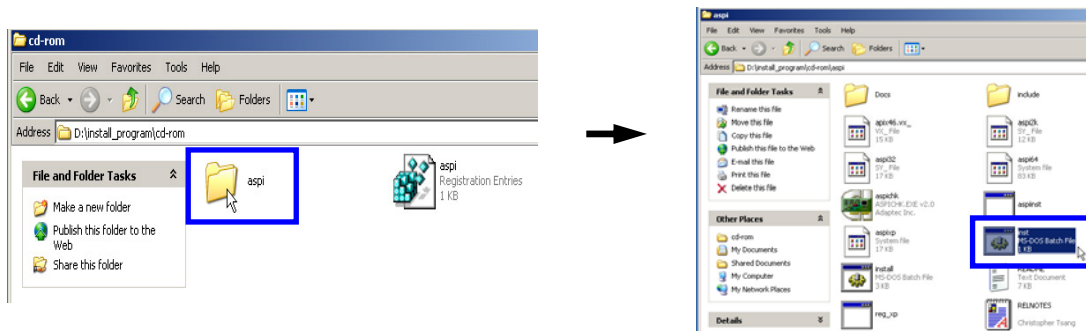
2) Set "ASPI" and CD-ROM

ASPI is a program for CD R/W's program works properly.

a) Double click the folder " install\_ program" at D: then double click "cd-rom" folder in order.



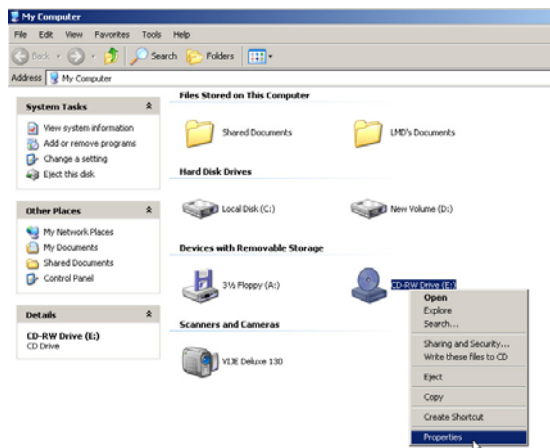
b) Double click "aspi" folder to go into then execute 'inst' file to double click.



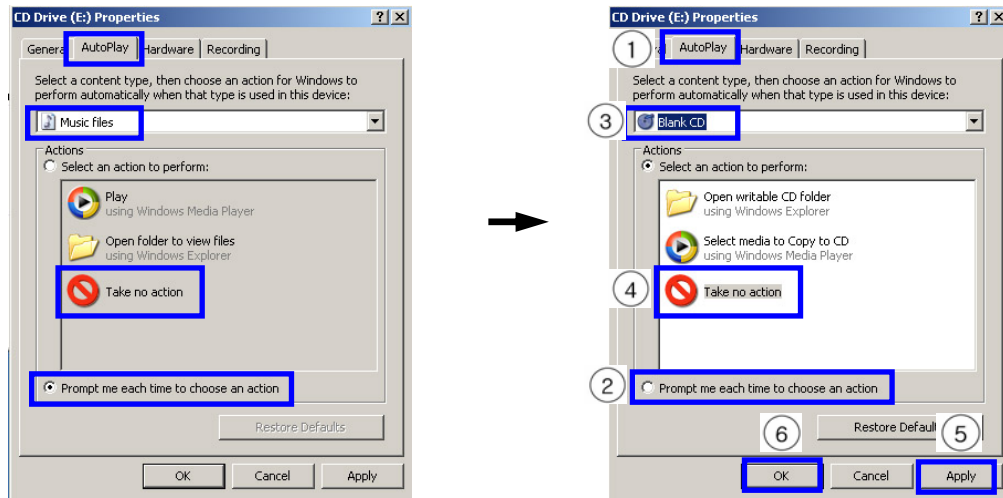
c) Execute 'aspi' file to double click in 'cd-rom' folder. And press OK.



d) Set 'CD-ROM auto start' as below.



e) Set in order as below and press Apply, OK.



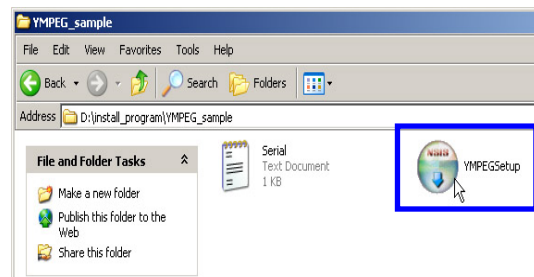
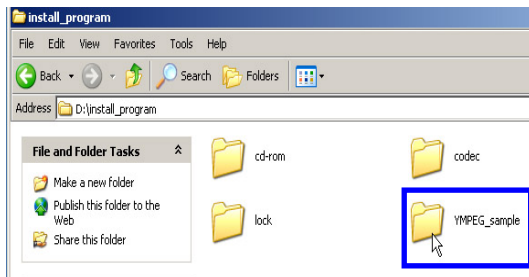
< Before >

< After >

### 3) YMPEG program installation

a) Double click install\_ program → YMPEG\_sample in order at D: to go in.

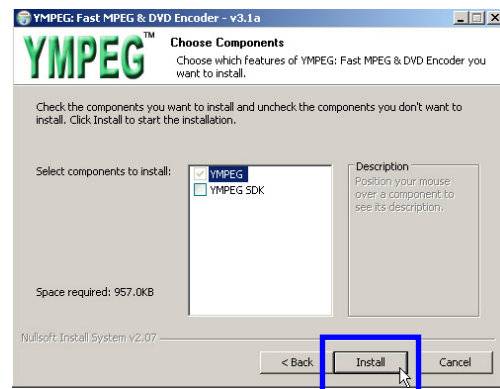
And double click YMPEGSetup file to execute.



b) Click Next>



c) Click Install

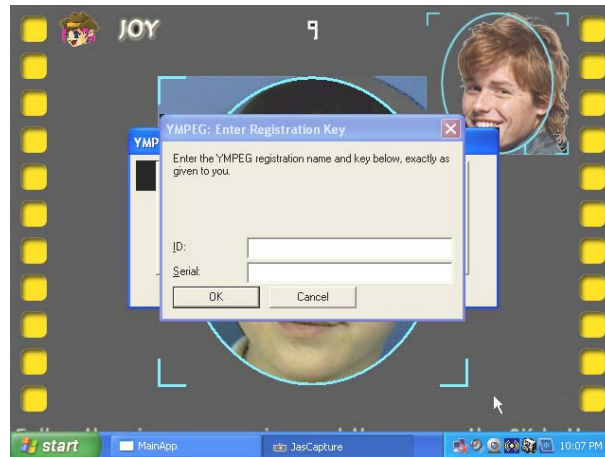


d) Click Finish

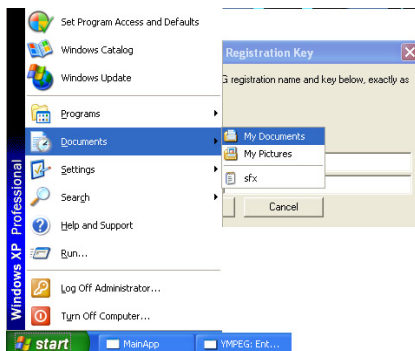


#### 4) Installation of YMPEG program Serial Key

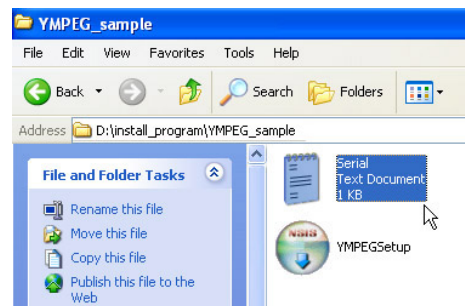
a) When PC is formatted or LMD program launched first after Window XP installed, 'YMPEG program Serial Key' asked in the screen. Press Window key in the keyboard then you see below.



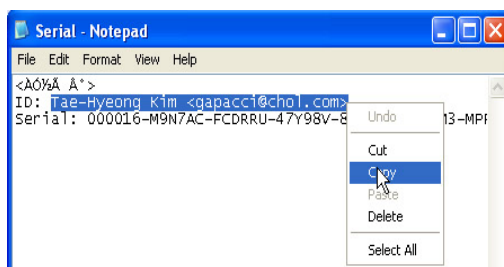
b) Press in order :  
Start → Documents → My Documents



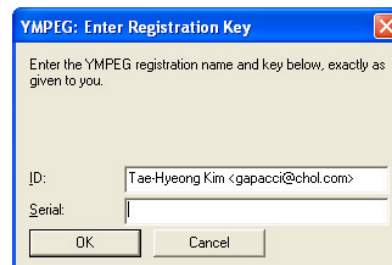
c) Press:  
D: → install\_ program → YMPEG\_sample  
and double click Serial to execute.



d) copy the ID as :  
Tae-Hyeong Kim gapacci@chol.com  
ments

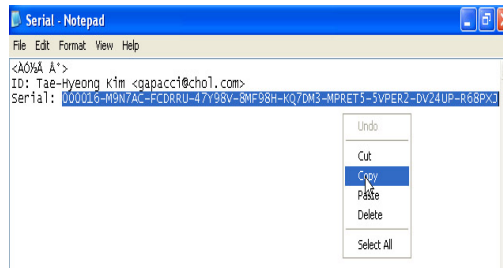


e) Paste the ID (Tae-Hyeong Kim gapacci@chol.com ) to ID blank (Use shortcut Ctrl+V in the keyboard).

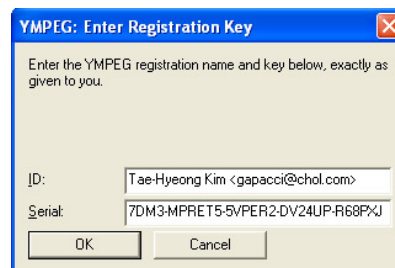


d) Copy Serial # :

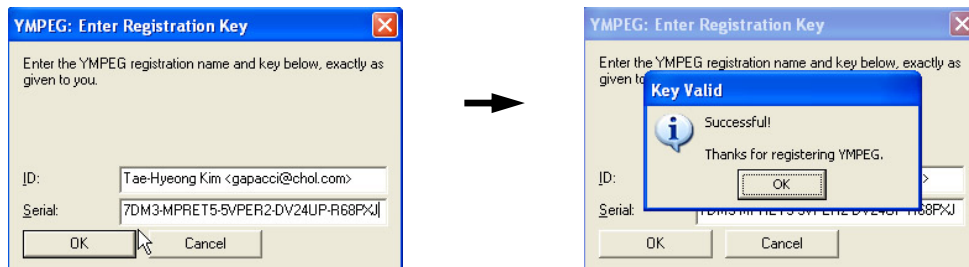
000016-M9N7AC-FCDRRU-47Y98V-8MF98H-KQ7DM3-MPRET5-5VPER2-DV24UP-R68PXJ



e) Paste the Serial# to Serial blank. (Use shortcut Ctrl+V in the keyboard).



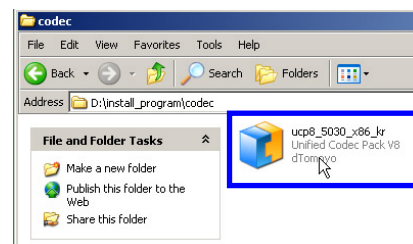
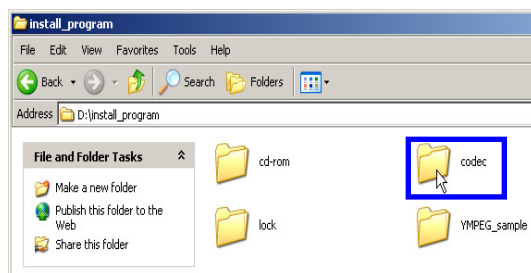
f) Press OK then done.




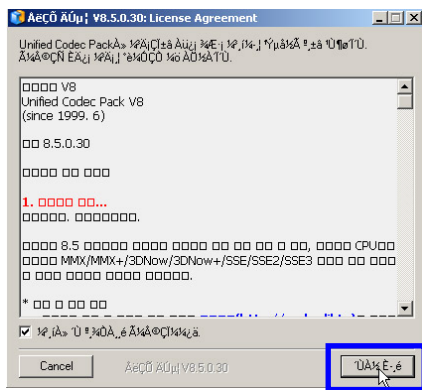
#### 4) CODEC installation

CODEC is a program to play a motion picture.

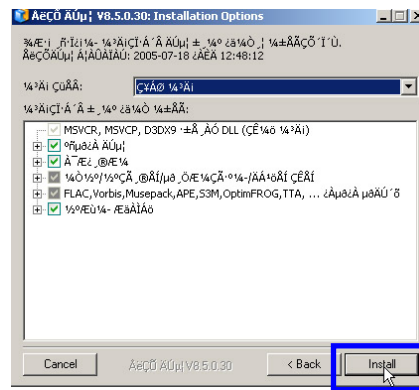
a) Double click install\_ program → codec in D: in order to go in. And double click 'Ucp8\_5030\_x86\_kr' file to execute.



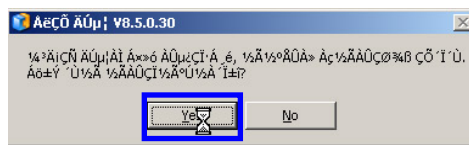
b) Click 



c) Click Install



d) Installation is done by Yes clicked.

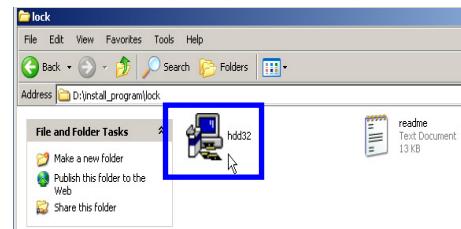
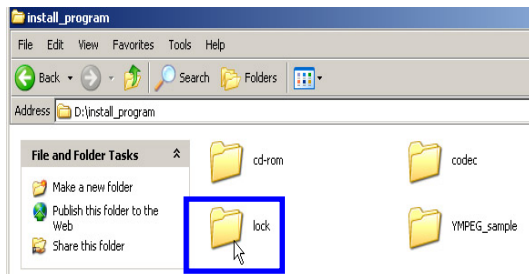


## 5) Installation Dongle program

Dongle program is a S/W lock program. Dongle is needed to perform LMD.

a) Double click to go in install\_program

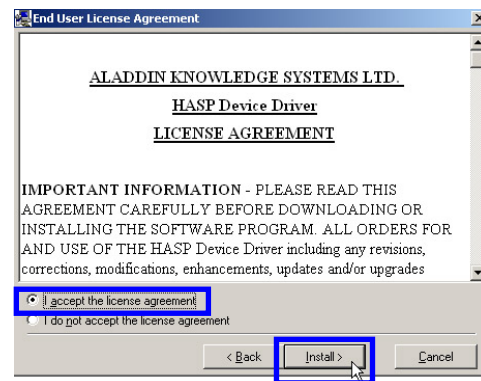
→ codec in order and Double click 'Hdd32' file in D: to execute.



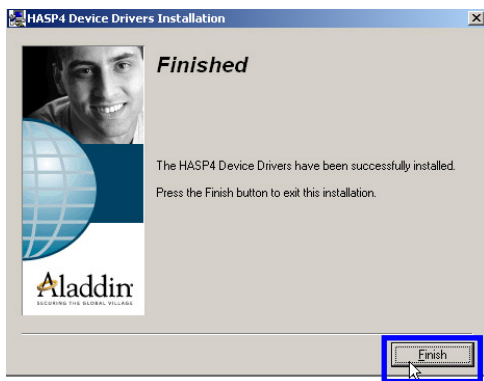
b) Click Next



c) Click Next



d) Click Finish.



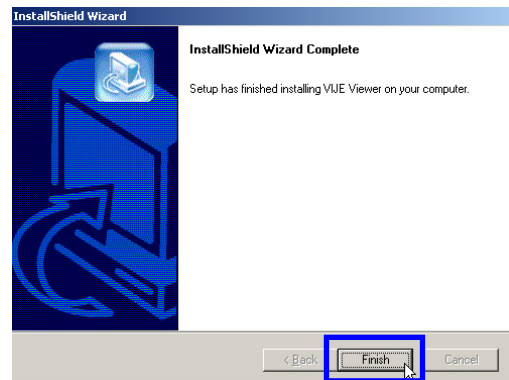
### 5-3. [Camera](#)

1) Installation Camera Driver & Program

Install a driver which makes a camera to work properly.

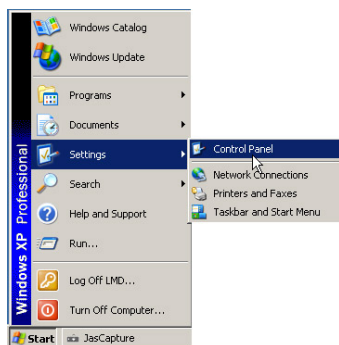
a) Click Installation. Driver will be set up automatically then click Finish.

Driver & Application will be installed together below steps.



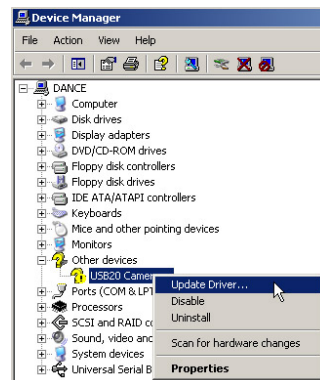
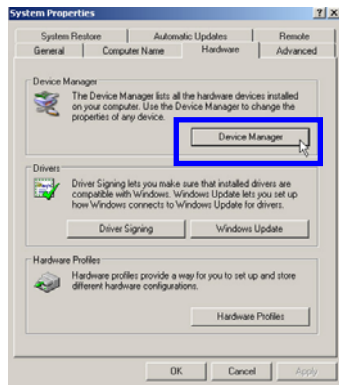
a) Click System in below order.

Start → Settings → Control Panel → System

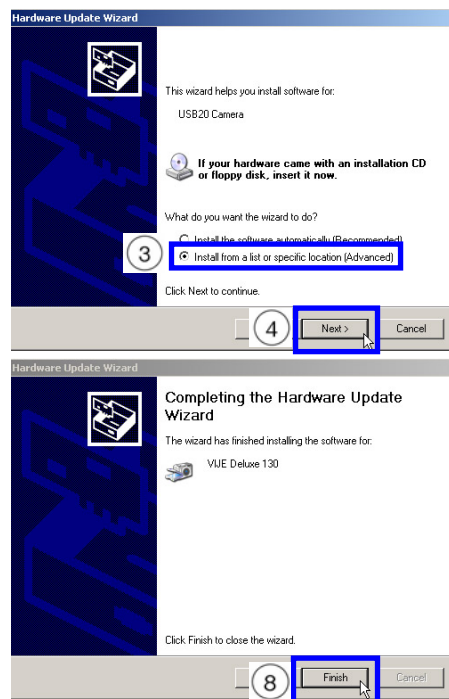
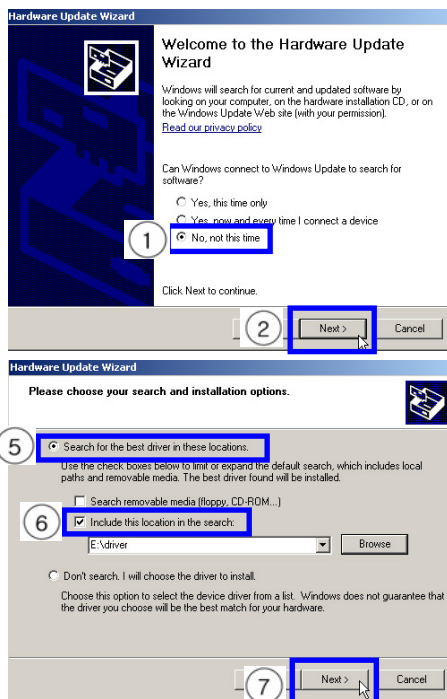


b) Select Hardware and click Device Manager.

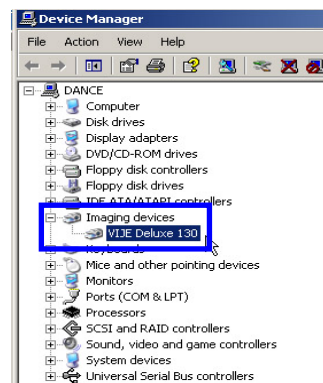
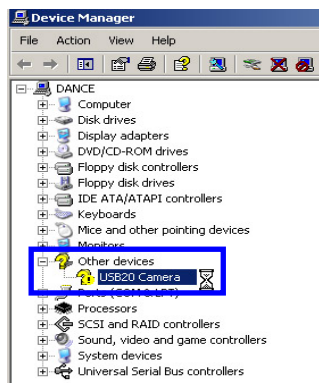
Select USB2.0 Camera and choose Update Driver with a right mouse key.





c) Select as below then install



d) Installation is done correctly you see below in Device Manager.

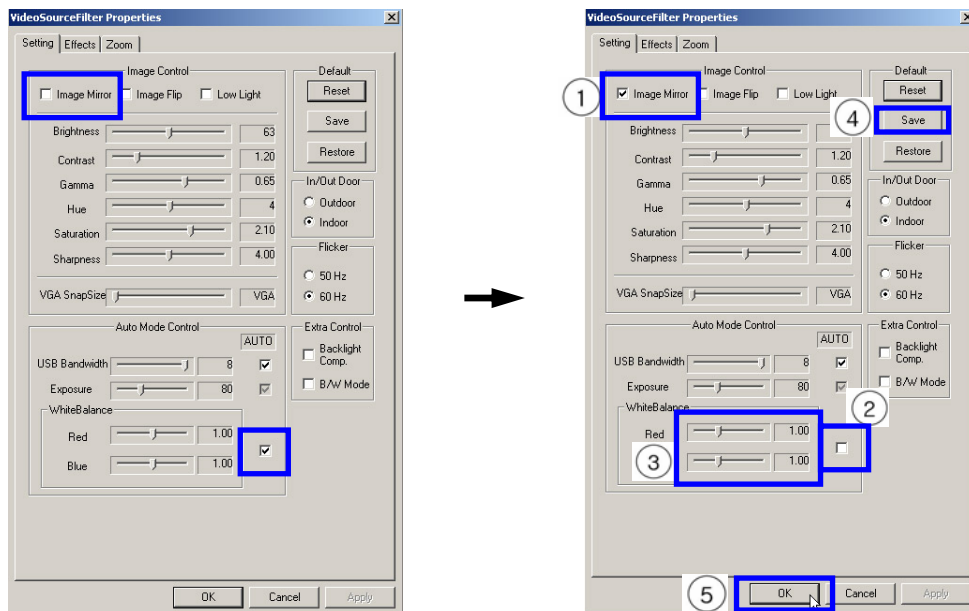


## 2) Set Up Camera program

- a) Double click Vije Viewer (  ) in desktop to execute Vije Viewer basic screen.
- b) Click the most right key (  ) out of 5 buttons on the screen then select **Video hue**.



- c) Change the configuration as below.

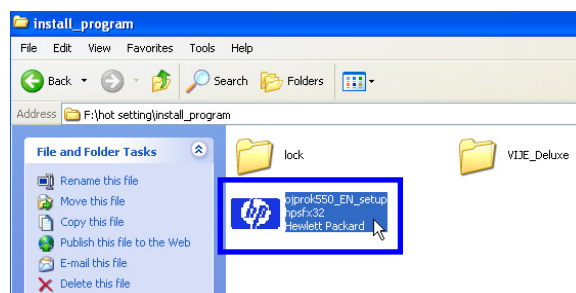


## 5-4. [Printer](#)

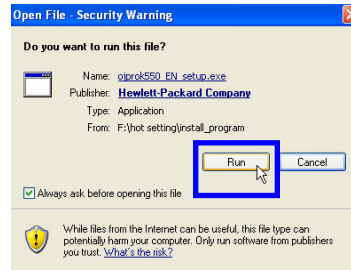
Set up printer using printer driver CD or driver program copied in D:

### 1) Set up process

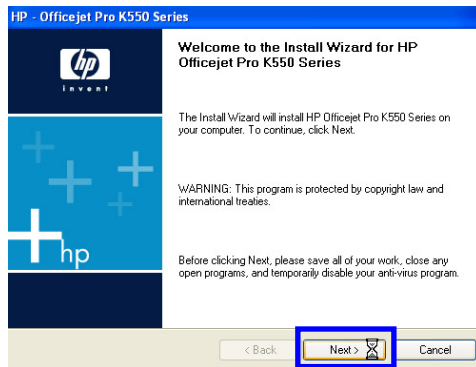
- a) D: install\_program → Click to go several folders on hp K550 driver.  
Click to operate "Ojprok550\_EN\_setuphpsfx32" file.



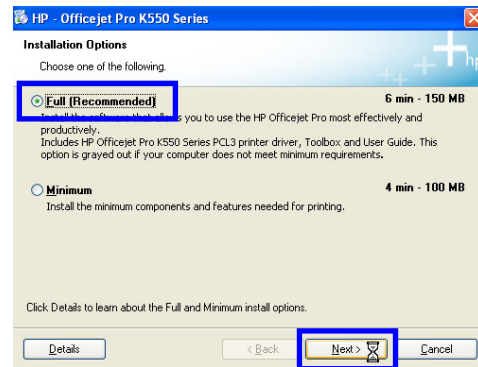
b) Click "Run".



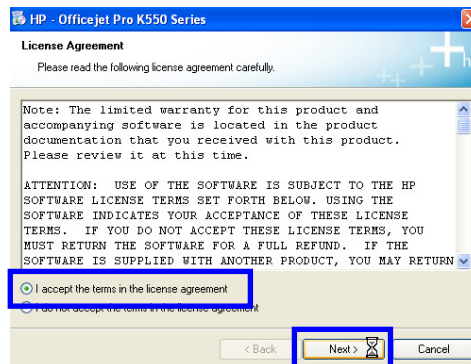
c) Click Next



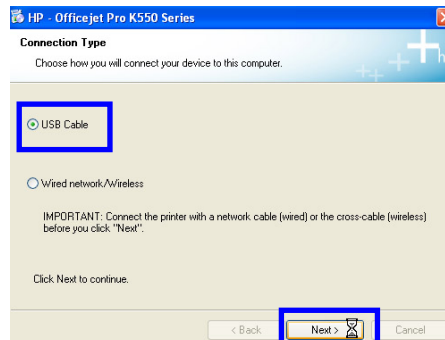
d) Click Next



e) ' I accept the terms in the license agreement ' and click Next.



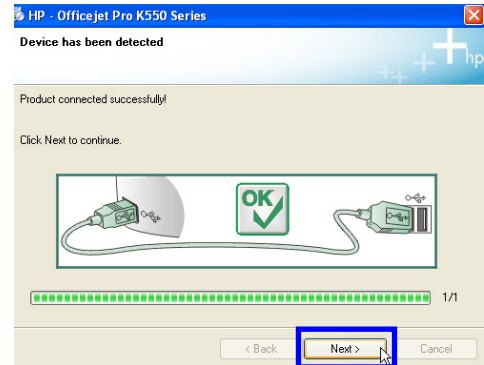
f) Select USB Cable and click Next.



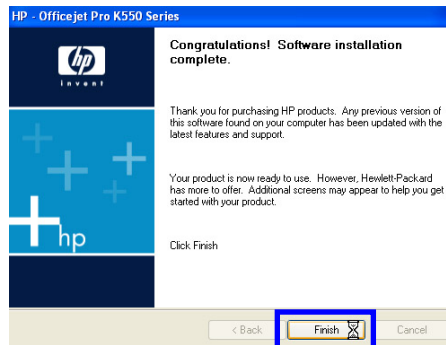
g) Connect Printer USB cable and a printer as following window.

Remove USB cable and reconnect it in case USB cable already connected.

Click Next button after connection.



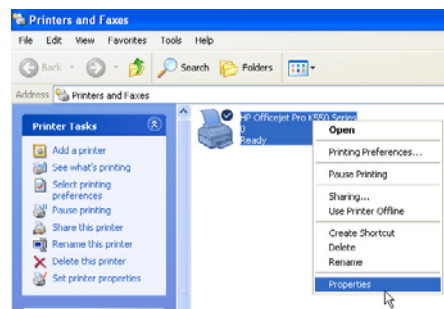
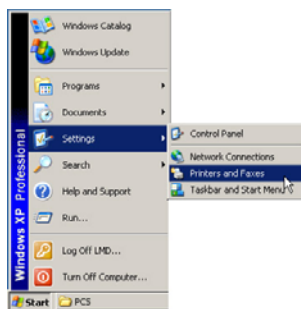
h) Click Finish



## 2) Printer Configuration

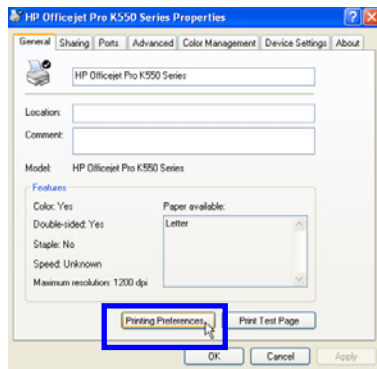
a) Follow below illustration and click HP k550 printer registration

Start → Settings → Printers and Faxes → HP Officejet Pro K550 Series



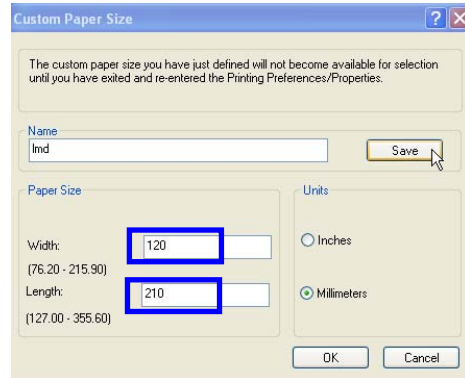
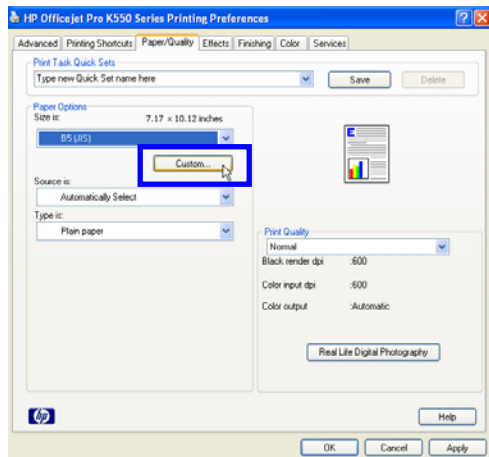


b) Click Printing Preferences.



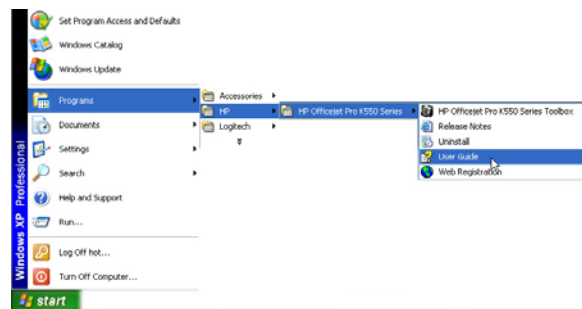
c) Move to Paper/Quality, and set up paper size.

Click Custom and setup paper size (Width:120mm, Length:210)



3) Printer manual

You can check printer manual as follows.



## 6. S/W PROGRAM

### 6-1. Screen Configuration

Click Setup(blue button) out of 4 buttons below right to see. (Or press F11)

Total Results

Printed CDs: 4

Credits Inserted: 0

Service Credits: 9

Select Month: [Dropdown]

Control Parameters

[Print More] Wait Time: 30

Auto Capture Time: 10

Time Between Demo: 8

Time For Each Demo: 195

Max Fail Retry Count: 1

Show Full Composition

Credits Per Print

Credit Type: Coin

Set BlueScreen (9)

OK, Cancel, View Month buttons are also present.

< Total Results >

- (1) Printed CDs : CD quantities music video recorded.
- (2) Credits Inserted : Amount inserted by a Coin/Bill acceptor.
- (3) Service Credits : Operation Count served by Service Button.
- (4) Select Month : Sales Volume per day, per month when you check.

Total Results

Printed CDs: 5

Credits Inserted: 0

Service Credits: 14

Select Month: 2006\_10

Control Parameters

[Print More] Wait Time: 30

Auto Capture Time: 10

Time Between Demo: 8

Time For Each Demo: 195

Max Fail Retry Count: 1

Show Full Composition

Credits Per Print

Credit Type: Coin

Set BlueScreen (9)

OK, Cancel, View Month buttons are also present.

Statistics Of 2006\_10

Date	Prints	Credits
02	1	0

Total Prints: 1

Average Prints: 1.0

Total Credits: 0

Average Credits: 0.0

OK button is present.

< Control Parameters >

We recommend operators to remain basic values of(5) and (6).

- (5) Printer More Wait Time : Set time to maintain message screen which shows same CD again to print out at the last stage of the play.
- (6) Auto Capture Time : Set time to take a picture by a camera. ( 10sec basically).

< Credits Per Print >

- (7) Credits Per Print : Set 1 play charge.

< Credit Type >

- (8) Credit Type : Select Bill acceptor.
- (9) Set Blue Screen : Set values to compound background.

(a) Camera takes a photograph the appearance below.

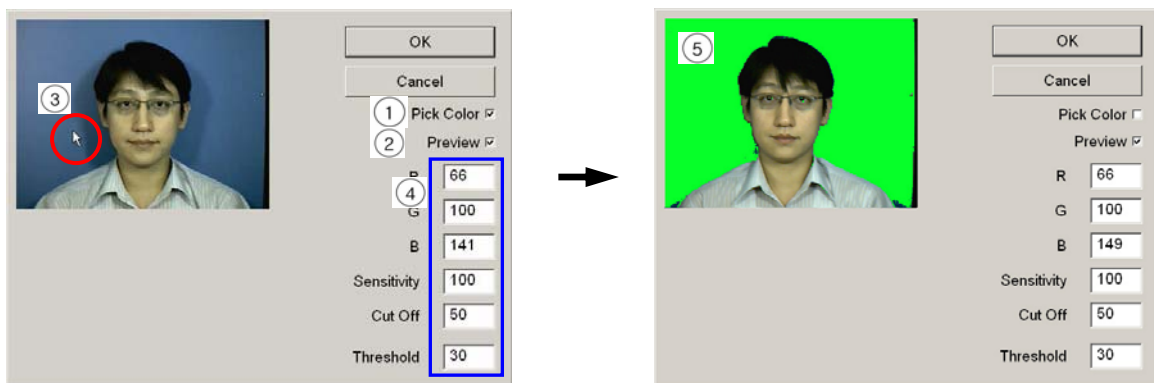
Click blank at Pick Color. Screen stops when you click.



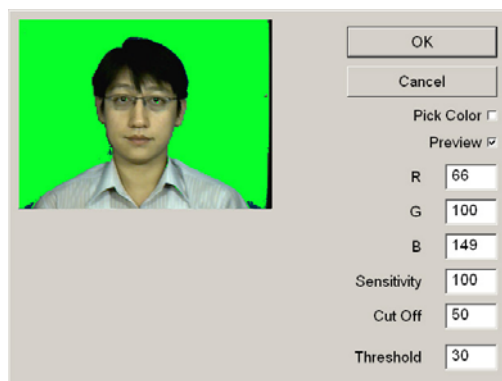
(b) Click Preview ( ② ) and Click blue background ( ③ ) with a mouse. Make sure to click pure blue background part not a person/shadow.

Clicked, values ( ④ ) of R, G, B are changed for the present condition. At the same time the blue background turns to green background ( ⑤ )

The values of R, G, B can be filled in directly then you can fill in to change directly.

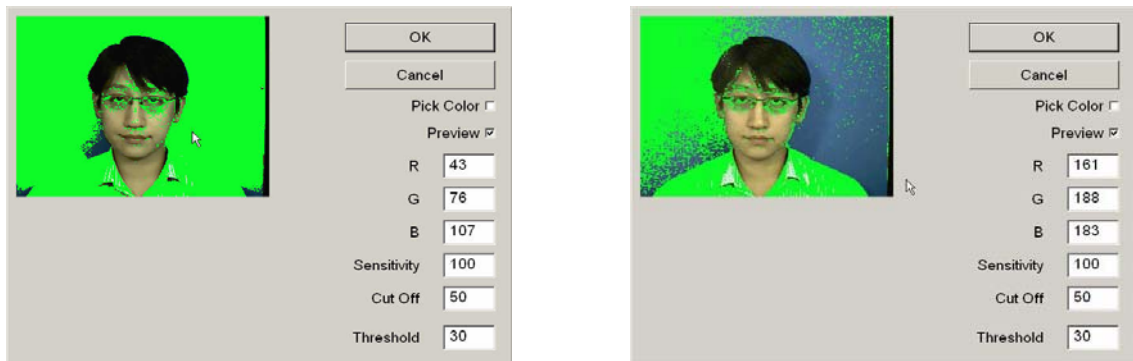


(c) Green background shows compound condition. The background is clear and clean below, compound value is applied well. Click OK to save values.



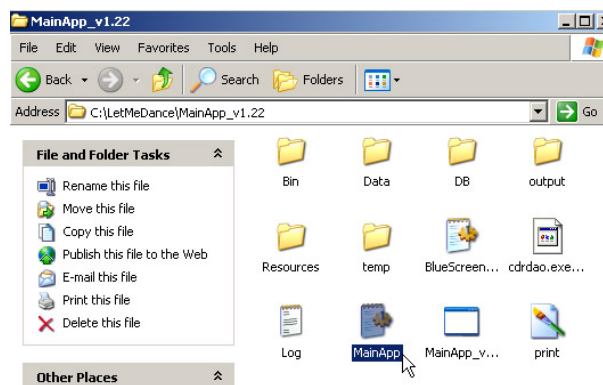
(d) External light which is bright too much or darken makes an effect on compound value then compound may go bad. Case that a LMD machine is located in a place with sunlight is same.

If you see below green background, the compound value is incorrect then go back stage(C ) and set compound again.



## 6-2. [Program MainApp.ini.File](#) (C:\LetmeDance\MainApp\_1.22)

Please, arrange ONLY below commands if it is necessary. Operator can set up of himself directly but problem happens with wrong instructions.



### [INFO]

- ① printCDCover=1
- ② cdDrive="d:"
- ③ fullScreen=1
- ④ CDUP\_delay=1000
- ⑤ CDOPEM\_delay=1000
- ⑥ musicVideoCount=3
- ⑦ useControlBox=0
- ⑧ reportControlBox=0
- ⑨ waitPrintMore=10      → Set time to maintain message screen which shows same CD again to print out.( Basic 10sec)
- ⑩ displayDebugMessage=0      → Message for the present condition of a machine. (0: To use, 1: Not to use)

- ⑪ creditsPerPrint=1 → Set the charge of 1 play (1Play = 1Credits at present)
- ⑫ creditType=COIN
- ⑬ languageProfile="resources\English" → Set program language.  
( example: "resources\Spanish")

[PRINTING]

- ① sceneBrightness=0
- ② sceneContrast=0
- ③ [RECORDING]
- ④ device=0,0,0
- ⑤ driver=generic-mmc
- ⑥ displayFramesPerPercent=16
- ⑦ writeSpeed=24
- ⑧ maxFailRetryCount=1
- ⑨ leadRecordingFrames=200
- ⑩ creditPageShowTime=15
- ⑪ waitBeforeRetryTime=10
- ⑫ showFullComposition=0
- ⑬ vcdFormat=NTSC → Set CD play format. ( NTSC: USA, Canada / PAL:Europe )

[CAPTURE]

- ① enableRetry=0
- ② captureTime=10 → Set the time to capture a photograph. Basic 10sec.  
If you set 15, it means 15sec to capture a photograph.

6-3. Error

1) Error Message



- a) Cause : Error message occurs when there is no CD or no CD Case on the screen.
- b) Solution : Load CDs/Cases to a dispenser.  
Load is from 6pcs to Max 56pcs for CD. Max60pcs for CD Case.  
(CD should be loaded Min 6pcs. Then counted 1.)

## 2) Check Dispenser

Check the dispenser within the LMD program.

- a) Execute MainApp.ini.File (C:\LetmeDance\MainApp\_1.22). (Ref. P31)
- b) Change value 0 of isplayDebugMessage (displayDebugMessage=0) to 1 at 10<sup>th</sup> line. (Ref. P31) and save it.
- c) Message comes out on screen when a program works.



- d) Displayed with no CD or CD Case as below. ( 0: No CD/CD Case. 1: CD/CD Case available)  
Program works properly in case of no error.



- CD 0, CASE 0, Paper 0 → No CD and No CD Case.
- CD 1, CASE 0, Paper 0 → Only CD available. CD Case and paper are out of stock.  
(CD should be loaded Min 6pcs. Then counted 1.)
- CD 0, CASE 1, Paper 0 → Only CD Case is available.
- Error message screen moves Main screen in case that CD and CD Case both are loaded.

- e) Sensor in Dispenser gets problems when value is 0 however CD or CD Case loaded.