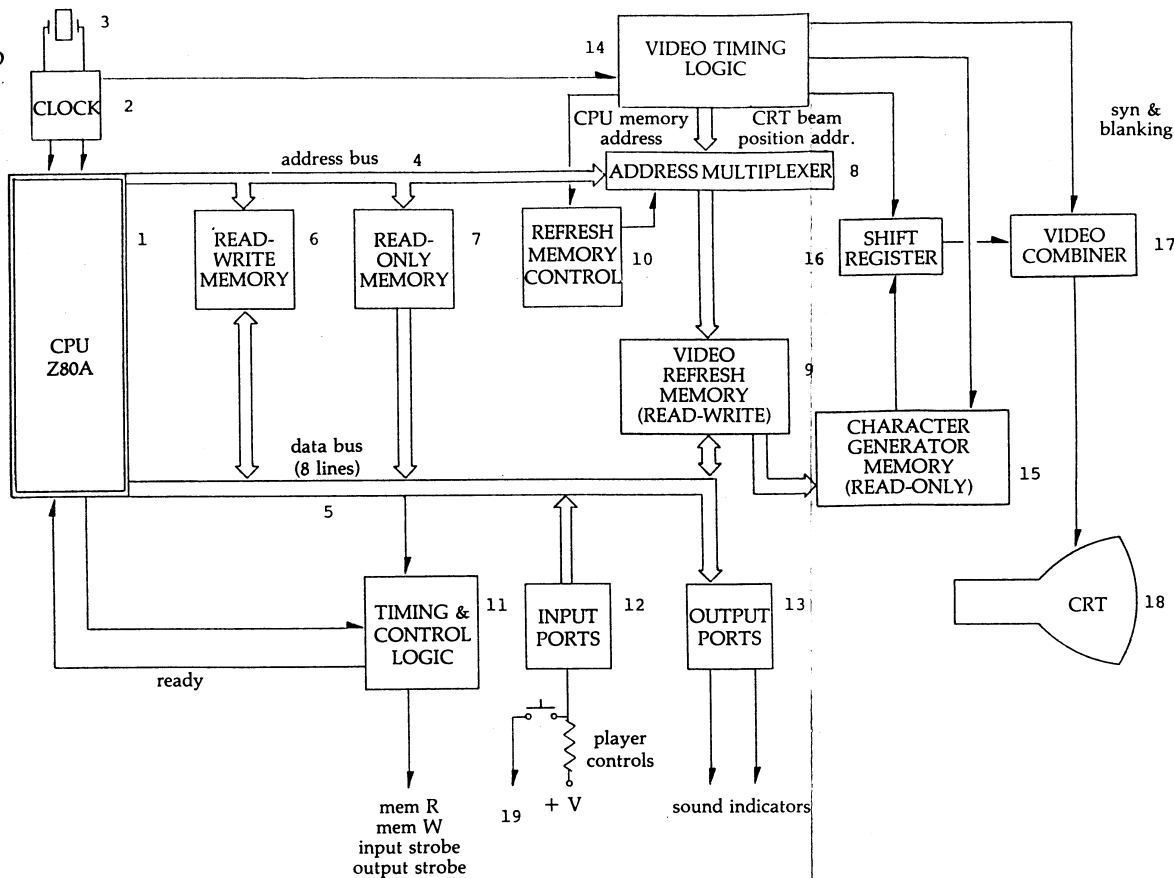


**BLOCK DIAGRAM:** Refer to schematic for parts that make up this diagram.

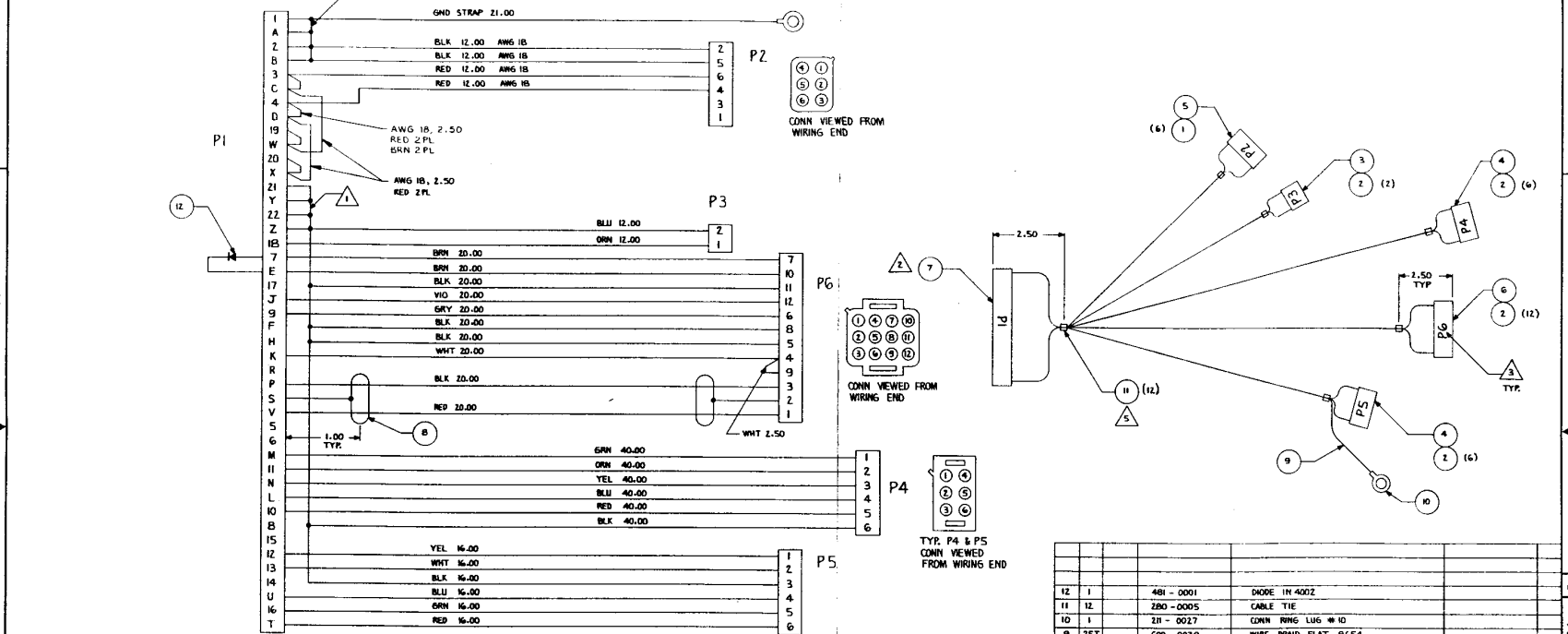
1. 7B
2. 1E, 1D, 3C
3. Crystal, 18.432 MHz
4. A0 through A15 on Z80 CPU; buffered by 7D, 7E, 8D
5. D0 through D7 on Z80 CPU; buffered by 8H, 8F
6. 2114: 3H, 3F, 7N, 7P  
2101: 4F, 5F  
93425: 1N, 1P, 1R, 1S, 1T
7. All Eprom
8. 6H, 6J, 4E, 5E, 2E, 3E, 2F
9. 8D
10. 8P
11. 8N, 8M, 9N, 5R, 4R, 5S, 4S, 5P
12. 9D, 9E, 9F, 9C
13. 9R, 8R, 8S, 8T, 9J, 9M, 6T, 7T, 7S, 9L
14. 1A, 1B, 2A, 2B, 2D, 6N, 6H, 6B, 6F, 3S, 3R, 5B
15. All Eprom
16. 2H, 2J, 2K, 2L, 1U, 3L
17. 6M, 6L
18. CRT (monitor)
19. Control Panel





8 7 6 5 4 3 2 1

REVISIONS				
ZONE	LTN	DESCRIPTION	DATE	APPROVED
A	RELEASED	SD	7-18-80	[Signature]
B	INC ECN 449	JV	8-15-80	[Signature]



ITEM NO.	QTY	CODE	PART OR IDENTIFYING NO.	NOMENCLATURE OR DESCRIPTION
12	1		481 - 0001	DIODE 1N4002
11	12		Z80 - 0005	CABLE TIE
10	1		Z11 - 0027	CONN RING LUG #10
9	2 FT		600 - 003B	WIRE BRND FLAT #654
8	2 FT		600 - 0029	CABLE 2 COND SHRED
7	1		Z11 - 0050	CONN 44 PIN CARD EDGE
6	1		Z11 - 0025	CONN PLUG AMP 12 PIN
5	1		Z11 - 0046	CONN CAP AMP 6 PIN
4	2		Z11 - 0045	CONN PLUG AMP 6 PIN
3	1		Z11 - 0043	CONN PLUG AMP 2 PIN
2	26		Z11 - 0042	CONN SOCKET AMP
1	1		Z11 - 0041	CONN PIN AMP

1. INSTALL CABLE TIES, ITEM 11, EVERY 6-8 INCHES AS REQUIRED BETWEEN LOCATIONS SHOWN.  
 4. ALL WIRE TO BE AWG 22 UNLESS OTHERWISE SPECIFIED.  
 3. MARK REF. DES. ON SIDE OF CONN. HOUSING USING BLK INK, 1/2 HIGH CHARACTERS.  
 2. COVER ALL EXPOSED WIRE CONNECTIONS WHERE POSSIBLE USING 1/8 SHRINK TUBING.  
 1. USE SOLID BARE COPPER WIRE, AWG 18, TO BUSS CONTACTS TOGETHER.
- NOTES:

UNLESS OTHERWISE SPECIFIED DIMENSIONS ARE IN INCHES TOLERANCES ARE:

FRACTIONS	DECIMALS	ANGLES
±	±	±

CONTRACT NO. **Gremlin Industries, Inc.**  
San Diego, California 92123

APPROVALS: [Signature] DATE: [Date]

DRAWN: [Signature] CHECKED: [Signature]

MATERIAL: [Blank]

FINISH: [Blank]

700 - 0030 NEXT ASSY USED ON

DO NOT SCALE DRAWING

SCALE: NONE

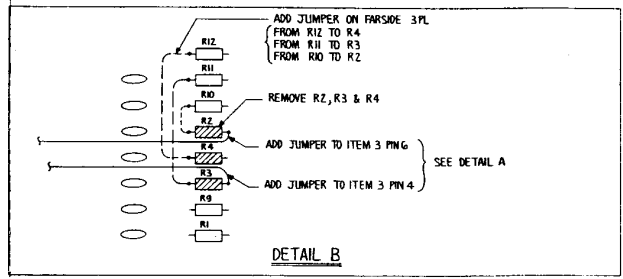
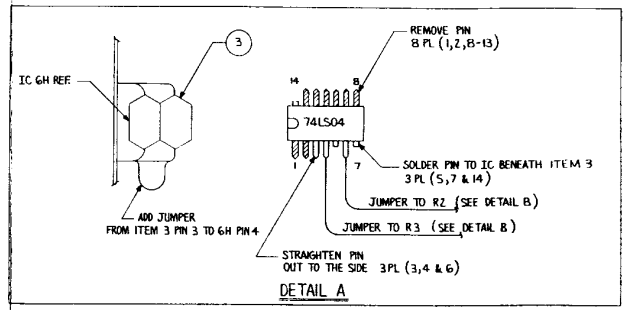
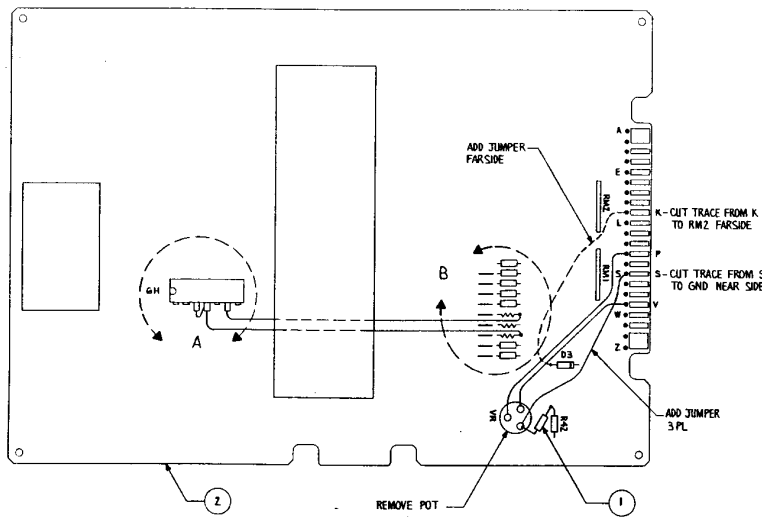
SIZE: D CODE: [Blank] IDENTIFYING NO.: [Blank] DRAWING NO.: 700-5104 REV. E

SHEET 1 OF 1

8 7 6 5 4 3 2 1



REVISIONS				
ZONE	LTN	DESCRIPTION	DATE	APPROVED
A		RELEASED	SD	7-17-80



1. ALL JUMPER WIRE TO BE AWG 26 .  
NOTES :

ITEM NO.	QTY	CODE	IDENT	PART OR IDENTIFYING NO.	QUANTITY	DESCRIPTION
3	1			314 - 0019		IC 74LS04
2	1			834 - 0026		ASSY GAME ELCC. M/C
1	1			470 - 0102		RESISTOR 1K, 1/4 W, 5%

PARTS LIST		CONTRACT NO.		APPROVALS		DATE	
UNLESS OTHERWISE SPECIFIED DIMENSIONS ARE IN INCHES TOLERANCES ARE: FRACTIONS DECIMALS ANGLES				DRAWN SON BUONICCONTI		7-17-80	
MATERIAL				CHECKED A. A. R. R. S. E.		7-17-80	
FINISH				DATE		DRAWING NO.	
NEXT ASSY				USED ON		800 - 3110	
APPLICATION				DO NOT SCALE DRAWING		SCALE NONE	

**Gremlin Industries, Inc.**  
San Diego, California 92113  
ASSY GAME ELECTRONICS  
M/C MODIFIED  
DRAWING NO. 800 - 3110  
REV. A  
SHEET 1 OF 1

800 - 3110









