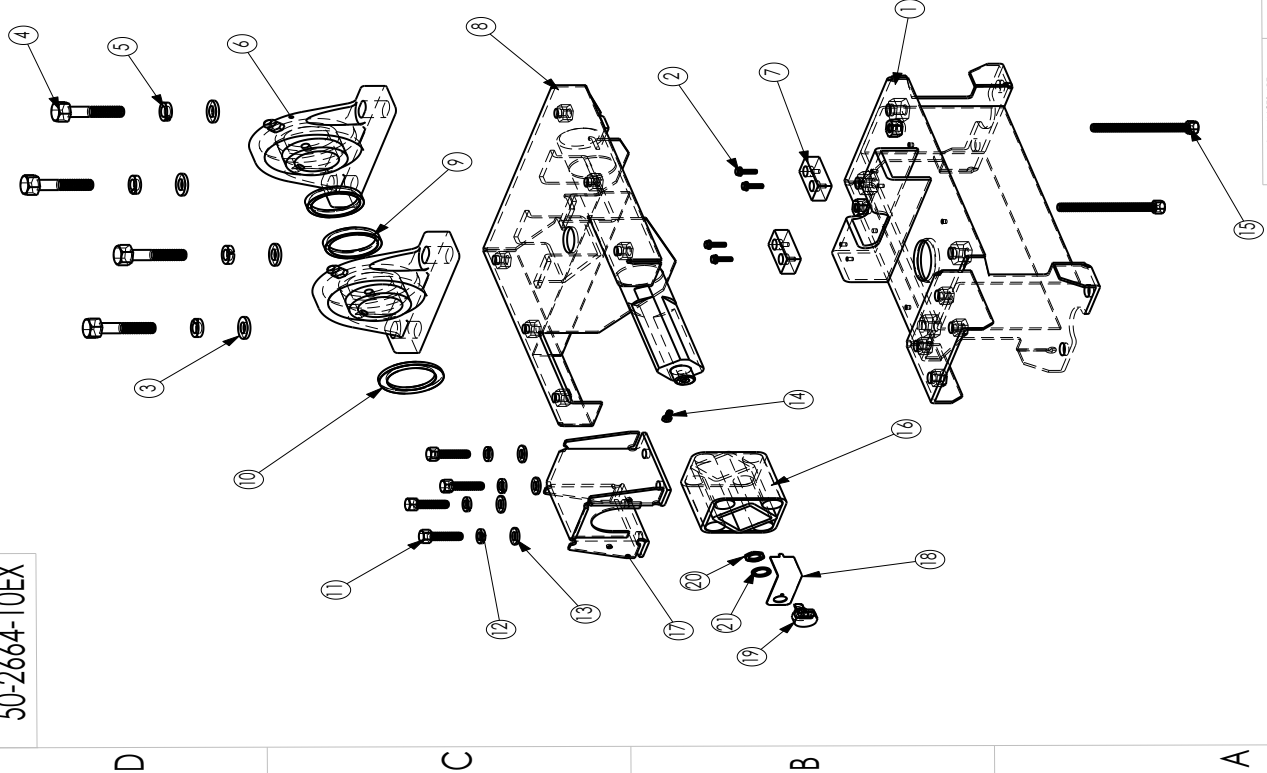


DRAWING: 50-2664-10EX



ITEM NO.	QTY.	PART NO.	DESCRIPTION
1	1	195-2773-00	ROSTA AND BEARING MOUNTING BASE
2	4	443-1274-00	SCREW 10-32 X 1/2 HHWCS
3	4	443-0055-00	WASHER, FLAT 1/2 SAE
4	4	443-0397-00	SCREW HHCS 1/2-13 X 1-3/4"
5	4	443-0399-00	LOCKWASHER SPLIT 1/2
6	2	50-0029-10	PILLOW BLOCK BEARING UCP 207:23 F&F
7	2	195-2770-00	STOP BUMPER F/PIVOT ASSY F&F
8	1	195-2775-00	STOP AND BASE WELDMENT
9	2	195-0458-00	WASHER (C) FOR PIVOT ASSY
10	1	195-0457-00	WASHER (B) FOR PIVOT ASSY
11	4	443-0533-00	SCREW 3/8-16 x 1.00 H.H.C.S
12	4	4701-00006-00	LOCK WASHER 3/8 SPLIT
13	4	443-0003-00	3/8 SAE FLAT WASHER ZNC PLTD
14	1	443-1546-00	SCREW 8-32 X 7/16 SHCS
15	2	443-0396-00	SCREW 3/8-16x3 HHCS FULLY THRD
16	1	50-0028-20	SUSPENSION UNIT/ROSTA, DR-S 38 X 80
17	1	195-0034-03	ROSTA LOCKING BRACKET FOR DR-S 38 X 80
18	1	195-2768-10	PIVOT POT BRKT F/38X80 ROSTA
19	1	50-3127-00	POT 1K 56 DEG NO NUT SIEBE SENSOR CUBE
20	1	443-0014-00	HEX NUT 3/8"-24 X 3/32 THK
21	1	443-0018-00	LOCKWASHER, INT. 3/8" x 9/16"

△ D
△ D
△ D

DRAWING NAME		PIVOT ASSY, STANDARD FOR F&F SUPERBIKES	
DRAWN BY	DATE	DESIGNED BY	DATE
FAC	11/17/05	FULL	
SCALE		SHEET	1 of 1
SIZE	B	DRAWING NO.	50-2664-10EX
REV			D

DO NOT SCALE DRAWING.
 THIS PRINT IS THE PROPERTY OF HAP CONTROLS INC. AND SHALL NOT BE REPRODUCED, COPIED OR DISCLOSED TO OTHERS. PRINT TO BE RETURNED UPON REQUEST.

TOLEANCES ARE:
 FRACTIONS DECIMALS ANGLES
 ± 1/32 ± .005 ± 10'
 UNLESS OTHERWISE SPECIFIED
 DIMENSIONS ARE IN INCHES.