

INSTRUCTION MANUAL

TEN YARD FIGHT '85™

ATTACK OF THE ...

SAVAGE BEE'S™

... FROM ANOTHER PLANET!

MEMETRON INC.

2350 BRICKVALE DR.

ELKGROVE VILLAGE, IL. 60007

312-595-2828

May 14, 1985

Dear Operator:

We hope you will be pleased with your purchase of Memetron's First Hit Hits. From information we have gathered from our extensive field testing, we are confident that, once you place these games on location you will be excited by the player response as we are that your investment on a Memetron product will give you a solid return on your hard-earned dollars.

Memetron is committed to provide the coin op industry with innovative price competitive equipment. Memetron currently markets products designed for the arcades, wall boxes for music operators and expects to continue to license other new products in the near future.

Sincerely,

Joe Kaminkow
Director of Marketing
Memetron Inc.

VIDEO GAME OPERATOR:

Don't Get Involved In A Federal Crime. Don't Buy Or Operate Copy Or Unauthorized Boards In Your Games.

Warning



Every operator who buys or operates a counterfeit or unauthorized board (imported or domestic) is contributing to the end of our industry and committing a **FEDERAL CRIME**.

New criminal laws have recently been enacted that provide for maximum penalties of \$250,000 or five years in prison or both, per offense. **EACH GAME IS A SEPARATE OFFENSE.**



WARNING

It is illegal to buy, sell, or operate a counterfeit or unauthorized video game board. This is a federal crime.

The Federal Bureau of Investigation (FBI) is the lead agency in the investigation and prosecution of this crime.

If you have any information about any unauthorized games in the United States, contact your local FBI or,

American Amusement Machine Association

205 The Strand
Suite 3

Alexandria, Virginia 22314
(703) 548-8044

All information will be treated in confidence.

IMPORTANT F.C.C. WARNING

This Kit is intended for use only on coin operated video games manufactured after October 1, 1983, which have been verified for compliance with the requirements in Part 15 of FCC rule for class A computing device. Improper connection of this kit or connection to any other coin operated video game not so manufactured or verified for compliance may cause unacceptable interference to radio and tv reception requiring the operator to make necessary to correct the interference. Memetron Inc., takes no responsibility for kits improperly connected and those connected to games for which use is not intended."

WARNINGS & NOTICES

WARNING

For safety and reliability, Memetron does not recommend or authorize any substitute parts or modifications of Memetron equipment.

Use of non-Memetron parts and modifications of game circuitry may adversely affect game performance.

Substitute parts or equipment modifications may void FCC type-acceptance.

Since this game is protected by Federal copyright, trademark and patent laws, unauthorized game-conversions may be illegal under Federal Law.

This "conversion" principle also applies to unauthorized facicles of Memetron equipment, logos, designs, publications, assemblies and games (or features not deemed to be in the public domain), whether manufactured with Memetron components or not.

Warning

Three-Wire Plug. This game must be plugged into a properly-grounded outlet to prevent shock hazard and to assure proper game operation. Do Not use a "cheater" plug to defeat the ground pin on the power cord, and do not cut off the ground pin.

NOTICE

Parts salvaged from your old game are required to complete your kit. These salvaged parts MUST operate perfectly, or the converted game cannot perform properly or safely. Always repair circuitboard malfunctions and cabinet damage before conversion is attempted

NOTICE

This kit is not intended for use with X-Y monitors. Suitable monitors are the horizontal or verticle raster-type with inputs for red, green and blue video as well as negative sync. (These inputs should be compatible with TTL logic levels.) Note: Savage Bees uses a verticle monitor, Ten Yard Fight'85 uses a horizontal monitor.

NOTICE

Be sure the power supply from your old game is capable of +5VDC, +5VDC at 6A and +12VDC at 1A. These operating voltages are necessary for your Kit.

NOTICE

SAVAGE BEES & TEN YARD FIGHT '85' are registered trademarks of Memetron Inc., 1985.

NOTICE

Please make sure you clean and lubricate your old coin mechanisms. It is important that you service them in order for this game to earn the maximum projected earnings.

Kit Parts Provided

| | |
|----------------------------|---------|
| 1) CPU Board | (1) |
| 1) Joystick(s) | (S2,T1) |
| 1) Control-panel overlay | (1) |
| 1) Marquee overlay | (1) |
| 1) Side Graphics | (2) |
| 1) Wiring harness | (1) |
| 1) Instructions | (1) |
| 1) Play instructions | (1) |
| 1) FCC sticker | (1) |
| 1) Misc. control strickers | (NA) |
| 1) Mounting screws | (4) |
| 1) Drilling template | (1) |
| 1) Joystick star | (S2,T1) |
| 1) Promotional sticker | (1) |
| 1) PCB Mounting blocks | (4) |

TOOLS AND SUPPLIES REQUIRED

- 1) Electric screwdriver
- 1) Wire Cutters
- 1) Electric drill
- 1) Soldering iron & solder
- 1) Pliers
- 1) Phillips screwdriver
- 1) Hex driver
- 1) 180-grit sandpaper (sander)
- 1) Navy blue, semi-gloss latex paint
- 1) Grease pencil or marker

After the control panel is securely on, with an exacto knife or razor blade carefully cut out holes on the control panel. Next stick the joystick stars and button stickers on the control panel. Replace your buttons on the control panel and tighten them down. Return the control panel to the game for the next step in the kit process.

NOTICE

Refer to the decal layout sheet for more information on graphics position.

Refer to the control panel template for control layout suggestions.

If the control panel that you are going to use is wood and is too thick for use with the enclosed button holders, than remove the switches from the holders and shim them with spacers.

WIRING PROCEDURES

INSTALLING INTERBOARD WIRING

[] Disconnect the old wiring harness from the CPU board. Using the schematic drawings from your old game, carefully note the function of each wire. Label the wires if this helps.

[] Carefully remove all circuitboards and the metal circuitboard panel from the game. Leave the transformer chassis and the power supply braid in the game.

[] Leaving several inches of wire from the old wiring harness at each connector, cut the wires near the game's coin door, monitor, player panel, power supply and speaker. DON'T cut the other side of these same wires (that is at the CPU-board end).

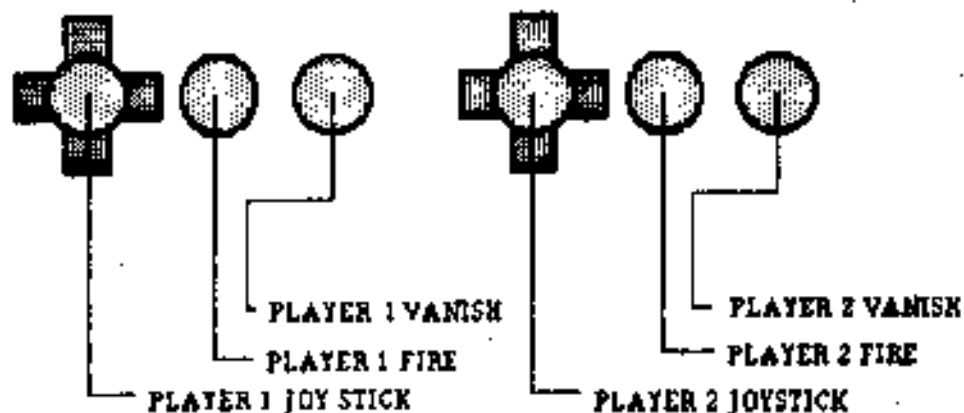
[] Following the schematic drawings for your kit, solder the coin-door, monitor, control panel, power-supply and speaker wires to the new CPU-board harness. Using electrical tape, be sure to insulate all splices.

[] If your game has series-pass transistors for the power supply on a separate heatsink, remount the metal heatsink beside the power supply board.

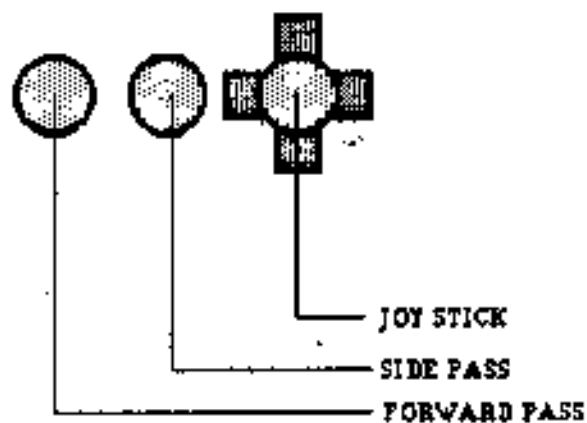
[] Check and clean the input jack on the power-supply board. Replace any burned or damaged pins

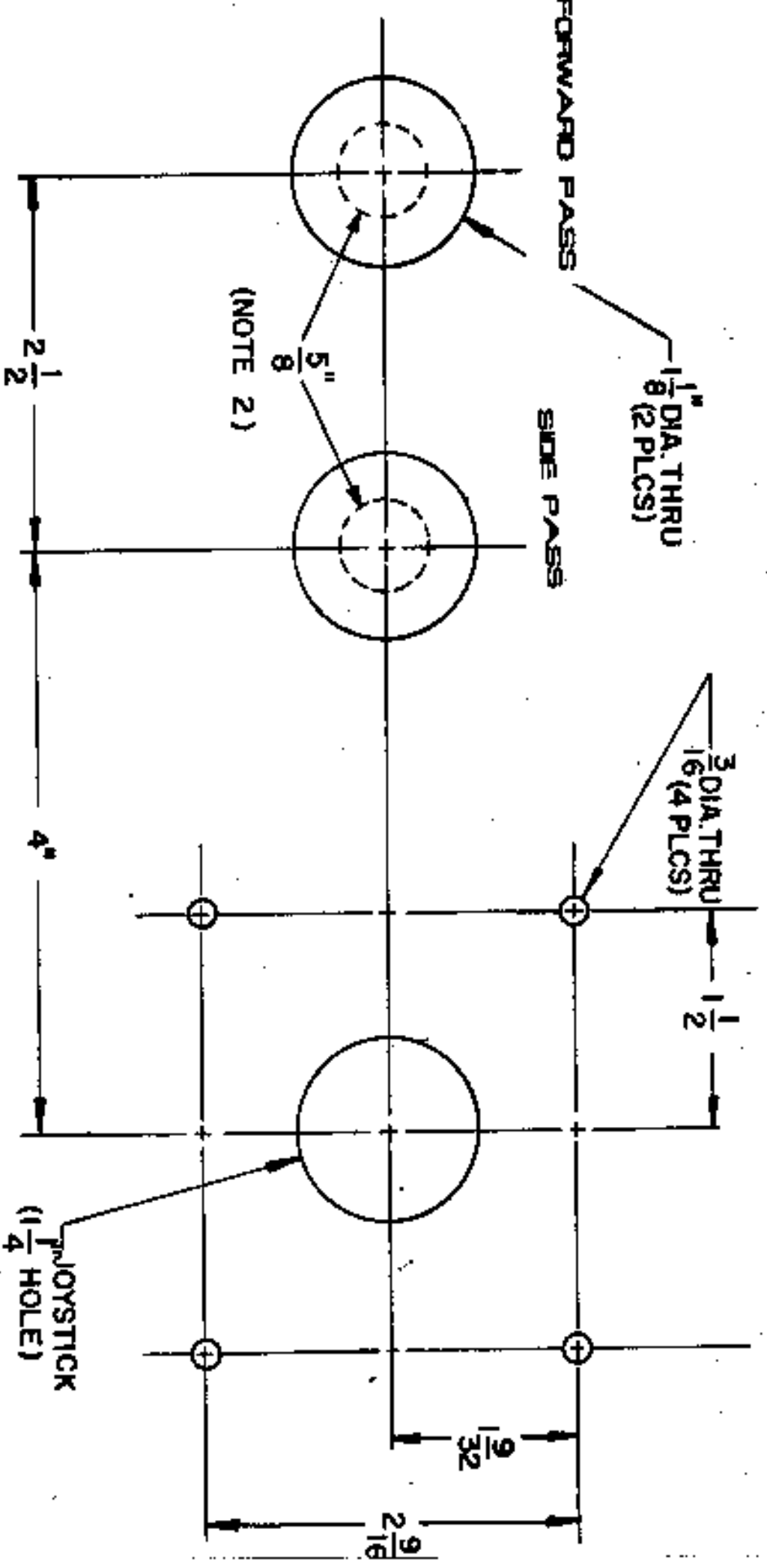
THANK YOU FOR THE PURCHASE OF A MEMETRON HIT KIT I

SAVAGE BEES CONTROL PANEL



TEN YARD FIGHT '85 CONTROL PANEL

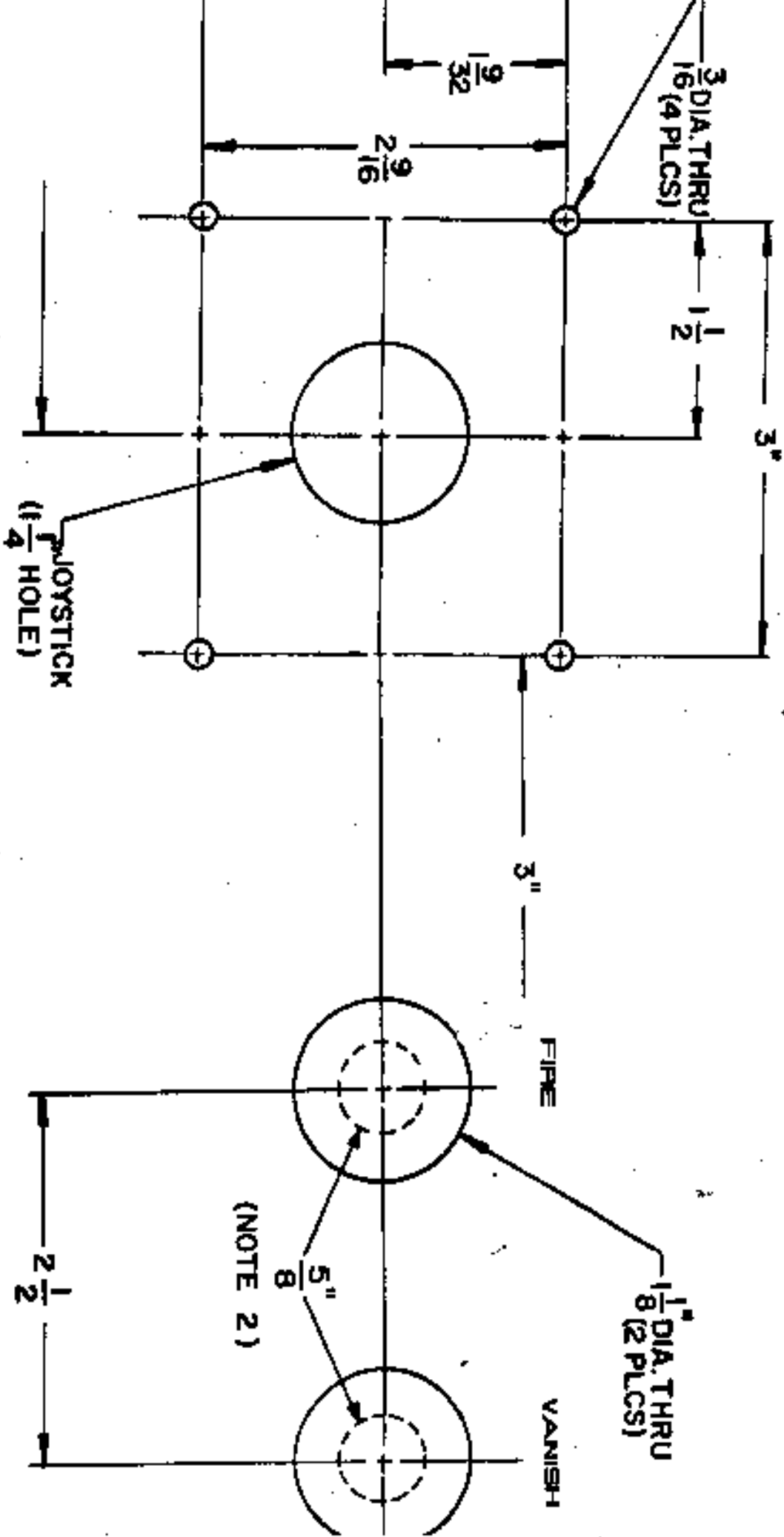




- NOTE:**
1. THESE DIMENSIONS ARE TO SCALE AND REFER TO METAL CONTROL PANELS.
 2. FOR WOOD CONTROL PANELS, DRILL $5/8$ " HOLE COMPLETELY THROUGH. THEN DRILL $1-1/8$ " HOLE TO $5/16$ " DEPTH.

**CONTROL PLATE
TEMPLATE**

SAVAGE BEES



CONTROL PLATE TEMPLATE

NOTE:

1. THESE DIMENSIONS ARE TO SCALE AND REFER TO METAL CONTROL PANELS.
2. FOR WOOD CONTROL PANELS, DRILL $\frac{5}{8}$ " HOLE COMPLETELY THROUGH. THEN DRILL $1\text{-}\frac{1}{8}$ " HOLE TO $\frac{5}{16}$ " DEPTH.

MAIN HARNESS
10-YARD FIGHT
KIT CONVERSION

| GA. | FUNCTION | WIRE / COLOR | PIN | WIRE / COLOR | FUNCTION | GA. |
|-----|-----------------------|--------------|------|---------------|-----------------|-----|
| 1 B | GND | GRN | A 1 | GRN | GND | 1 B |
| 1 B | GND | GRN | B 2 | | GND N/C | |
| | | | C 3 | | | |
| | | | D 4 | BLK WHT | LEFT COIN CNTR. | 2 2 |
| | <i>2 pl left</i> | <i>gray</i> | E 5 | BRN | JOYSTICK LEFT | 2 2 |
| | <i>2 pl right</i> | <i>white</i> | F 6 | BRN WHT | JOYSTICK RIGHT | 2 2 |
| | <i>2 pl side pass</i> | <i>blue</i> | H 7 | BLK | SIDE PASS | 2 2 |
| 2 2 | 1 PLAYER | GRY | J 8 | ORG WHT | 2 PLAYER | 2 2 |
| 2 2 | RIGHT COIN CNTR. | BLU RED | K 9 | | | |
| 2 2 | NEG. SYNC | WHT | L 10 | BLU WHT | COIN SW. RIGHT | 2 2 |
| 1 B | +12 | YEL RED | M 11 | YEL RED | +12 | 1 B |
| | | | N 12 | | | |
| 2 2 | AUDIO + | WHT RED | P 13 | VIO | AUDIO -- | 2 2 |
| 2 | <i>pl For Pass</i> | <i>red</i> | R 14 | WHT BLU | FORWARD PASS | 2 2 |
| 2 2 | VIDEO GREEN | GREEN | S 15 | RED | VIDEO RED | 2 2 |
| | | | T 16 | BLUE | VIDEO BLUE | 2 2 |
| | <i>2 pl down</i> | <i>gray</i> | U 17 | <i>orange</i> | <i>2 pl up</i> | |
| 2 2 | JOYSTICK DOWN | GRY WHT | V 18 | ORG | JOYSTICK UP | 2 2 |
| 2 2 | COIN SW. LEFT | RED WHT | W 19 | YEL RED | SERVICE SW. | 2 2 |
| 1 B | +5 | RED | X 20 | RED | +5 | 1 B |
| | | | Y 21 | | | |
| 1 B | GND | GRN | Z 22 | GRN | GND | 1 B |

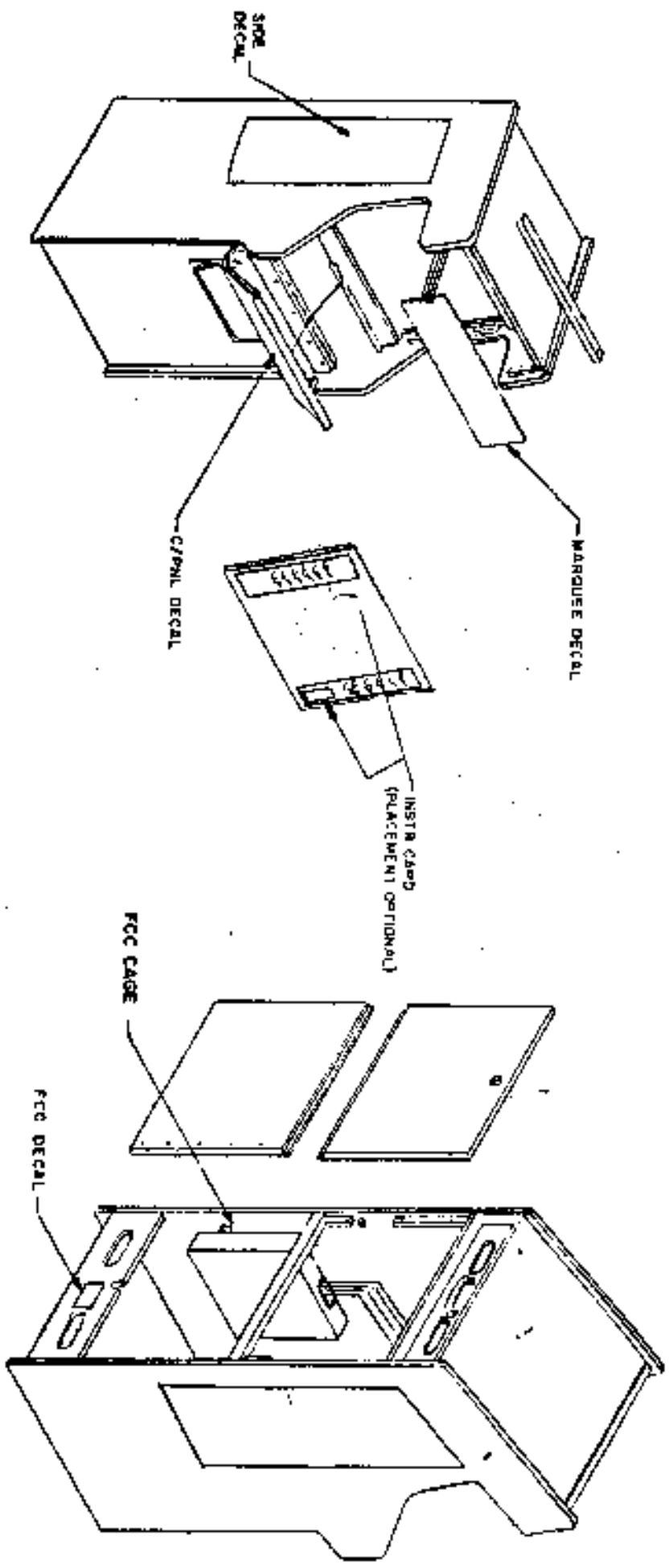
COMPONENT SIDE

**SAVAGE BEES KIT
MAIN CABLE**

| GA. | COLOR | FUNCTION | PIN | PIN | FUNCTION | COLOR | GA. |
|-----|---------|-----------------|-----|-----|-----------------|---------|-----|
| 18 | GRN | GND | A | 1 | GND | GRN | 18 |
| 18 | GRN | GND | B | 2 | GND | GRN | 18 |
| 18 | RED | +5 | C | 3 | +5 | RED | 18 |
| 18 | RED | +5 | D | 4 | +5 | RED | 18 |
| 22 | GREEN | VIDEO | E | 5 | VIDEO | RED | 22 |
| 22 | WHT | NEG SYNC | F | 6 | VIDEO | BLUE | 22 |
| 18 | GRN | GND | H | 7 | GND | GRN | 18 |
| | | | J | 8 | | | |
| 22 | ORG | SHOT 2 | K | 9 | SHOT 2 | ORG | 22 |
| 22 | YEL RED | SHOT 1 | L | 10 | SHOT 1 | YEL RED | 22 |
| 22 | GRY | 2 PLAYER - UP 1 | M | 11 | UP 1 - 1 PLAYER | GRY | 22 |
| 22 | VIO | DOWN 1 | N | 12 | DOWN 1 | VIO | 22 |
| 22 | ORG WHT | LEFT 1 | P | 13 | LEFT 1 | ORG WHT | 22 |
| 22 | BLU WHT | RIGHT 1 | R | 14 | RIGHT 1 | BLU WHT | 22 |
| 18 | GRN | GND | S | 15 | GND | GRN | 18 |
| | | 2 PLAYER START | T | 16 | 1 PLAYER START | WHT RED | 22 |
| 22 | GRY WHT | SERVICE | U | 17 | | | |
| 22 | WHT BLU | COIN 2 | V | 18 | COIN 1 | RED WHT | 22 |
| 18 | GRN | GND | W | 19 | GND | GRN | 18 |
| | | | X | 20 | | | |
| | | | Y | 21 | | | |
| 22 | BLK | +12 COMMON | Z | 22 | +12 COMMON | BLK | 22 |
| 22 | WHT | CNTR 2 | a | 23 | CNTR 1 | GRN | 22 |
| 22 | BLU | SPKR - | b | 24 | SPKR + | RED | 22 |
| 18 | YEL RED | +12 | c | 25 | +12 | YEL RED | 18 |
| 22 | BRN | +12 GND | d | 26 | +12 GND | BRN | 22 |
| 18 | GRN | GND | e | 27 | GND | GRN | 18 |
| 18 | GRN | GND | f | 28 | GND | GRN | 18 |

COMPONENT SIDE

DECAL LOCATIONS



"10-YARD FIGHT" DIP SWITCH ADJUSTMENTS

DIP SWITCH 1

| OPTIONS | | SWITCHES | 1 | 2 | 3 | 4 | 5 | 6 | 7 | 8 | | | | | | | |
|--------------------------------------|---------------------------------------|----------------|------------|---|-----|-----|-----|-----|-----|-----|--|--|--|--|-----|-----|--|
| TIMER SPEED BETWEEN PLAYS | NORMAL | | | | OFF | OFF | | | | | | | | | | | |
| | X 1.3 | | | | ON | OFF | | | | | | | | | | | |
| | X 1.5 | | | | OFF | ON | | | | | | | | | | | |
| | X 1.8 | | | | ON | ON | | | | | | | | | | | |
| MODE 2 DIP SWITCH 2 POSITION 3 ON | COIN-SELECTOR A | 1 COIN/1 PLAY | ALWAYS OFF | | | | OFF | OFF | | | | | | | | | |
| | | 2 COINS/1 PLAY | | | | | ON | OFF | | | | | | | | | |
| | | 3 COINS/1 PLAY | | | | | OFF | ON | | | | | | | | | |
| | | FREE PLAY | | | | | ON | ON | | | | | | | | | |
| | COIN-SELECTOR B | 1 COIN/2 PLAYS | | | | | | | | | | | | | OFF | OFF | |
| | | 1 COIN/3 PLAYS | | | | | | | | | | | | | ON | OFF | |
| | | 1 COIN/5 PLAYS | | | | | | | | | | | | | OFF | ON | |
| | | 1 COIN/6 PLAYS | | | | | | | | | | | | | ON | ON | |
| | MODE 1 DIP SWITCH 2 POSITION 3 OFF | 1 COIN/1 PLAY | | | | | | | | | | | | | OFF | OFF | |
| | | 2 COINS/1 PLAY | | | | | | | | | | | | | ON | OFF | |
| | | 3 COINS/1 PLAY | | | | | | | | | | | | | OFF | OFF | |
| | | 4 COINS/1 PLAY | | | | | | | | | | | | | ON | OFF | |
| | | 5 COINS/1 PLAY | | | | | | | | | | | | | OFF | ON | |
| | | 6 COINS/1 PLAY | | | | | | | | | | | | | ON | OFF | |
| 1 COIN/2 PLAYS | | | | | | | | OFF | OFF | ON | | | | | | | |
| 1 COIN/3 PLAYS | | | | | | | | ON | OFF | ON | | | | | | | |
| 1 COIN/4 PLAYS | | | | | | | | OFF | ON | ON | | | | | | | |
| 1 COIN/5 PLAYS | | | | | | | | ON | ON | OFF | | | | | | | |
| 1 COIN/6 PLAYS | | | | | | | | OFF | OFF | ON | | | | | | | |
| FREE PLAY | | | | | | | | ON | ON | ON | | | | | | | |
| CONTINUED PLAY | YES | | ON | | | | | | | | | | | | | | |
| | NO | | OFF | | | | | | | | | | | | | | |

Note: Set for Coin Mode 1 in case a single coin-selector or two selectors of the same coin value are used.
Set for Coin Mode 2 in case two coin-selectors of different coin values are used.

DIP SWITCH 2

| OPTIONS | SWITCHES | 1 | 2 | 3 | 4 | 5 | 6 | 7 | 8 |
|------------------|----------|-----|-----|-----|--------|-----|--------|-----|-----|
| SCREEN INVERSION | PLAYER 2 | OFF | | | | | | | |
| | PLAYER 1 | ON | | | | | | | |
| CABINET TYPE | T T | | OFF | | | | | | |
| | UPRIGHT | | ON | | | | | | |
| COIN MODE | MODE 1 | | | OFF | ALWAYS | | ALWAYS | | |
| | MODE 2 | | | ON | | | | | |
| FREEZE PICTURE | NORMAL | | | | OFF | OFF | OFF | | |
| | FREEZE | | | | | ON | | | |
| HIT MODE | NORMAL | | | | | | | OFF | |
| | NO HIT | | | | | | | ON | |
| TEST MODE | NORMAL | | | | | | | | OFF |
| | TEST | | | | | | | | ON |

NOTE: Press 2P. start button to freeze picture. Press 1P. start button to let it move again.

DIP SWITCH

| DIP SW A | | | | | | | | | |
|------------------|----------------------------|-------|-------|-------|-------|-------|---------------|-------|-------|
| ITEM | DESCRIPTION | 1 | 2 | 3 | 4 | 5 | 6 | 7 | 8 |
| TEST MODE | NORMAL TEST | OFF * | | | | | | | |
| | | ON | | | | | | | |
| PORTHAUT STOP | NORMAL STOP | | OFF * | | | | | | |
| | | | ON | | | | | | |
| JAPAN FOREIGN | JAPANESE LANGUAGE | | | OFF | | | | | |
| | ENGLISH LANGUAGE | | | ON * | | | | | |
| 1P/2P PLAY FEE | 1P/1 COIN, 2P/2 COINS | | | | OFF * | | | | |
| | COMMON FEE | | | | ON | | | | |
| NUMBER OF PLAYER | 3 | | | | | OFF * | OFF * | | |
| | 1 | | | | | OFF | ON | | |
| | 2 | | | | | ON | OFF | | |
| | 5 | | | | | ON | ON | | |
| BONUS PLAYER | 50T-100T-250T-500T-750T | | | | | | | OFF * | OFF * |
| | 100T-250T-500T-750T-1000T | | | | | | | OFF | ON |
| | 100T-250T-500T-1000T-2000T | | | | | | | ON | OFF |
| | 200T-500T-1000T-2000T | | | | | | | ON | ON |
| T= THOUSAND | | | | | | | | | |
| DIP SW B | | | | | | | | | |
| ITEM | DESCRIPTION | 1 | 2 | 3 | 4 | 5 | 6 | 7 | 8 |
| DEMO SOUND | WITH SOUND | OFF | | | | | | | |
| | WITHOUT SOUND | ON | | | | | | | |
| CONTINUE MODE | CONTINUE | | OFF * | | | | | | |
| | DISCONTINUE | | ON | | | | | | |
| COIN 2 | 1 CREDIT - 1 COIN | | | OFF * | OFF * | OFF * | | | |
| | 2 CREDIT - 1 COIN | | | OFF | OFF | ON | | | |
| | 3 CREDIT - 1 COIN | | | OFF | ON | OFF | | | |
| | 4 CREDIT - 1 COIN | | | OFF | ON | ON | | | |
| | 5 CREDIT - 1 COIN | | | ON | OFF | OFF | | | |
| | 1 CREDIT - 2 COINS | | | ON | OFF | ON | | | |
| | 1 CREDIT - 3 COINS | | | ON | ON | OFF | | | |
| | 1 CREDIT - 4 COINS | | | ON | ON | ON | | | |
| COIN 1 | SAME AS COIN 2 | | | | | | SAME AS 3,4,5 | | |

JOYSTICK ASSEMBLY

1. Refer to FIG. 1 before starting installation.
2. For normal replacement of Ball Handle, Spring and/or Switch Actuator, disregard steps 3, 4, and 5 below.

INSTALLATION INSTRUCTIONS

1. From inside of game, remove E-ring from Ball Handle Shaft.
2. Pull Ball Handle out of Joystick Assembly and remove Switch Actuator and Spring from inside of game.
3. Remove Joystick Assembly from Control Panel of game.
4. Replace 2" washer.
5. Fasten Joystick Assembly to Control Panel of game.
6. Insert new Ball Handle through Control Panel and Joystick Assembly.
7. From inside the game, push Spring and appropriate Switch Actuator over end of Ball Handle Shaft and secure with E-ring.

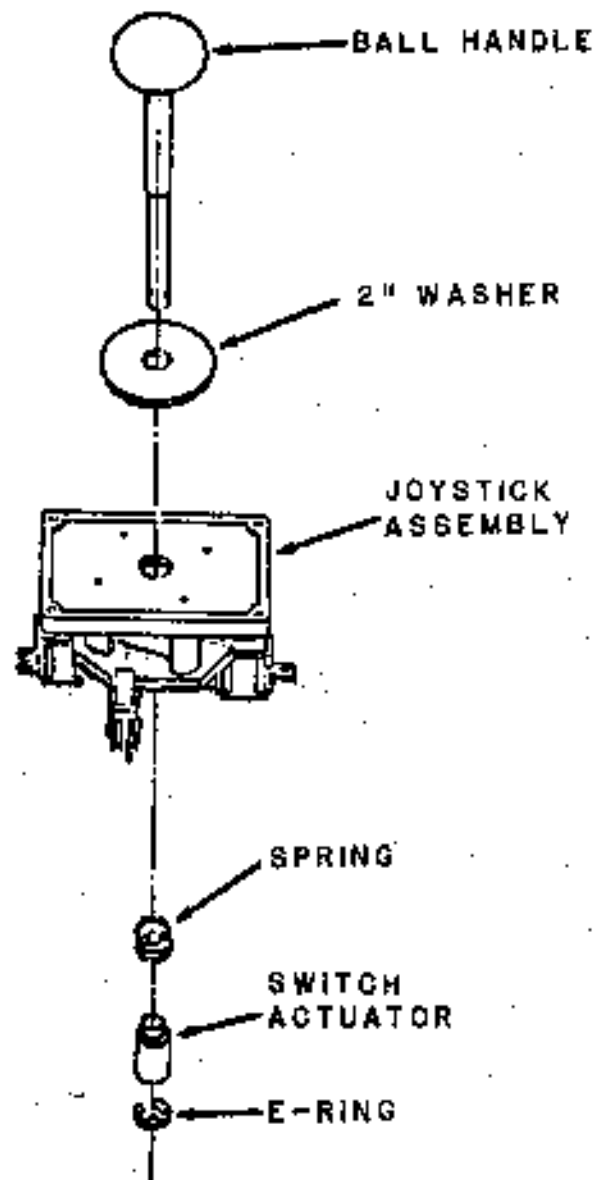


FIGURE 1

SORRY WERE OUT OF STOCK !

MEMETRON HAS TEMPORARILY RUN OUT OF FCC CAGES OUR PARTS DEPARTMENT WILL SHIP AN FCC CAGE TO YOU UPON RECIPT OF THE ATTACHED FORM. THEY WILL BE IN STOCK AS OF JUNE 10, 1985. WE ARE SORRY FOR ANY INCONVENIENCE WE MAY HAVE CAUSED YOU.

TO RECEIVE YOUR FCC CAGE PLEASE MAIL THE FOLLOWING FORM TO: MEMETRON INC.

2350 BRICKVALE DRIVE
ELK GROVE VILLAGE, IL. 60007
312-595-2828

| | |
|-------------------------|-------------|
| COMPANY NAME | |
| YOUR NAME | |
| ADDRESS | |
| | |
| PHONE () - | |
| KIT NAME | PCB SERIAL# |

NOTICE: PLEASE DO NOT USE POST OFFICE BOX NUMBERS

THANK YOU !

ASK ABOUT OUR HOT NEW GAME
THATS JUST RIGHT FOR THE
SUMMER TIME . . .

ATOMIC BOY™

UNDER EXCLUSIVE LICENSE TO
MAGNETRON INC. FROM IREM INC.

VS 10 YARD FIGHT AMENDMENT WIRING

| GA. | FUNCTION | WIRE / COLOR | PIN | WIRE / COLOR | FUNCTION | GA. |
|-----|------------------|--------------|------|--------------|-----------------|-----|
| 1 8 | GND | GRN | 1 A | GRN | GND | 1 8 |
| 1 8 | GND | GRN | 2 B | | GND N/C | |
| | | | 3 C | | | |
| | | | 4 D | BLK WHT | LEFT COIN CNTR. | 2 2 |
| | * 2 PLAYER LT | | 5 E | BRN | JOYSTICK LEFT | 2 2 |
| | * 2 PLAYER RT | | 6 F | BRN WHT | JOYSTICK RIGHT | 2 2 |
| | * 2 PL SIDE PASS | | 7 H | BLK | SIDE PASS | 2 2 |
| 2 2 | 1 PLAYER | GRY | 8 J | ORG WHT | 2 PLAYER | 2 2 |
| 2 2 | RIGHT COIN CNTR. | BLU RED | 9 K | | | |
| 2 2 | NEG. SYNC | WHT | 10 L | BLU WHT | COIN SW. RIGHT | 2 2 |
| 1 8 | +12 | YEL RED | 11 M | YEL RED | +12 | 1 8 |
| | | | 12 N | | | |
| 2 2 | AUDIO + | WHT RED | 13 P | VIO | AUDIO - | 2 2 |
| | * 2 PL FOR PASS | | 14 R | WHT BLU | FORWARD PASS | 2 2 |
| 2 2 | VIDEO GREEN | GREEN | 15 S | RED | VIDEO RED | 2 2 |
| | | | 16 T | BLUE | VIDEO BLUE | 2 2 |
| | * 2 PLAYER DN | | 17 U | | * 2 PLAYER UP | |
| 2 2 | JOYSTICK DOWN | GRY WHT | 18 V | ORG | JOYSTICK UP | 2 2 |
| 2 2 | COIN SW. LEFT | RED WHT | 19 W | YEL RED | SERVICE SW. | 2 2 |
| 1 8 | +5 | RED | 20 X | REQ | +5 | 1 8 |
| | | | 21 Y | | | |
| 1 8 | GND | GRN | 22 Z | GRN | GND | 1 8 |

COMPONENT SIDE

* NOTE: THESE CABLES MUST BE
ADDED TO THE CONNECTOR FOR
THE VS. SOFTWARE VERSION.