



SERVICE BULLETIN

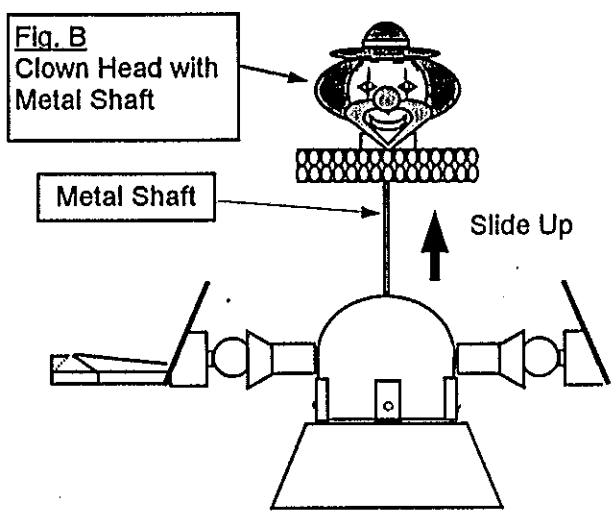
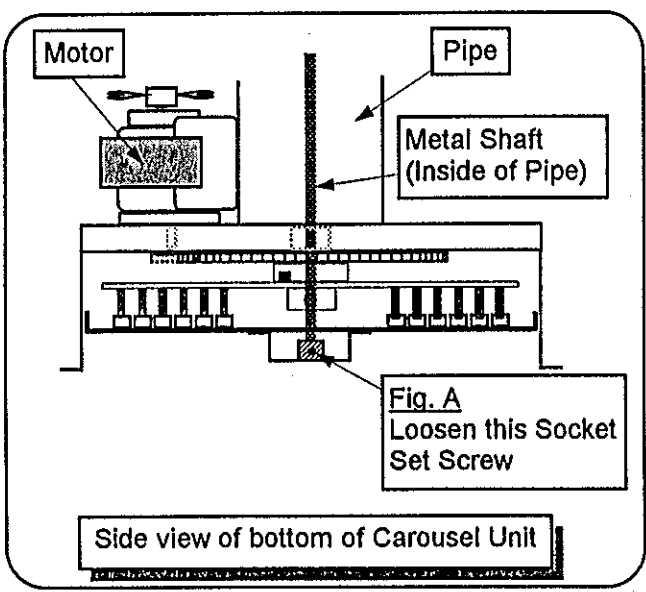
DATE: 9/27/95

GAME NAME: " COIN CIRCUS "

SUBJECT: How to fix Arm hitting problem.

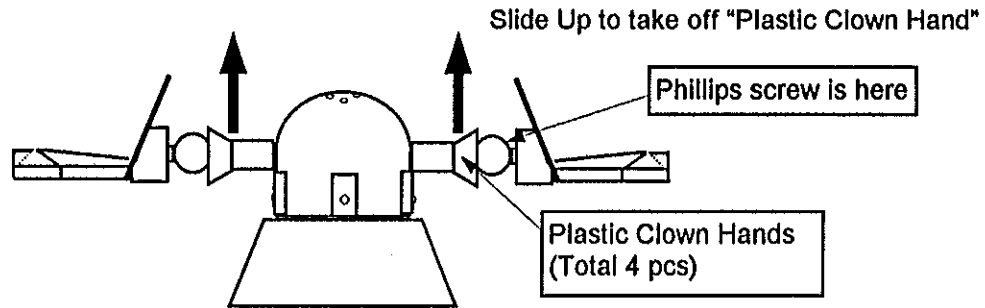
Tools need : Socket Wrench sets, Phillips Screwdriver, Pliers

- 1) Remove Top Glass. (Refer to Original Operating Manual page 7.)
 Open the Back Door of game. Look at bottom of Carousel Unit.
 Loosen one socket set screw which is mounted at the very bottom of Carousel Unit. (See Fig. A)
 Remove "Clown Head" with Metal Shaft. (See Fig. B)

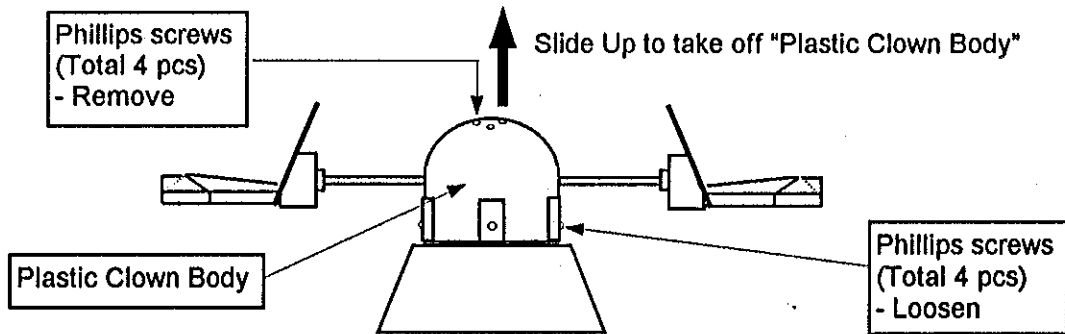




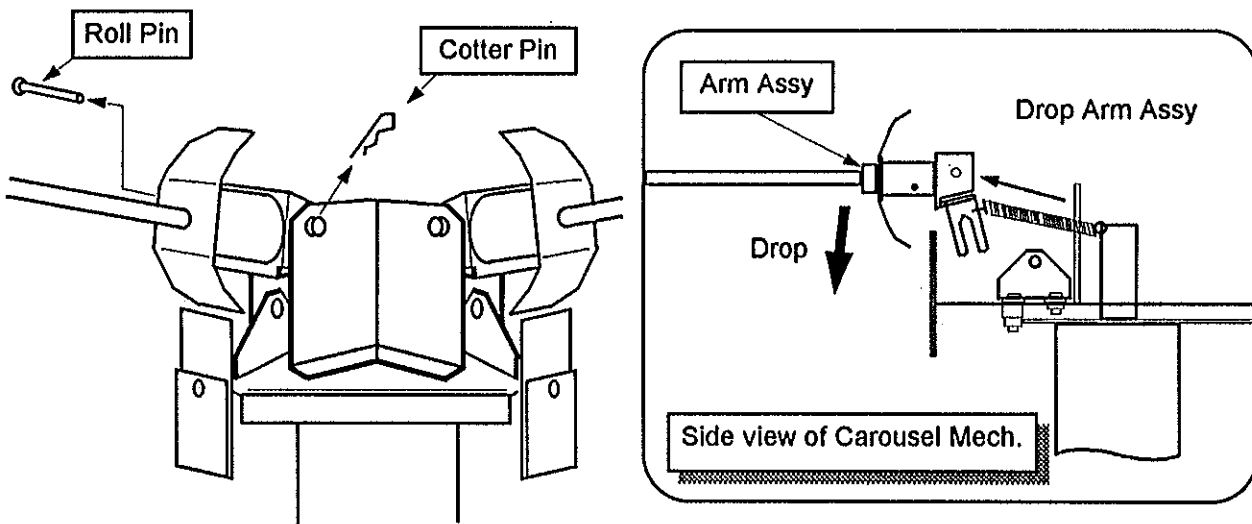
2) Remove Phillips screws to take off All 4 pcs of "Plastic Clown Hands."



3) Remove 4 Phillips of screws on top and loosen 4 pcs of bottom to take off "Plastic Clown Body"

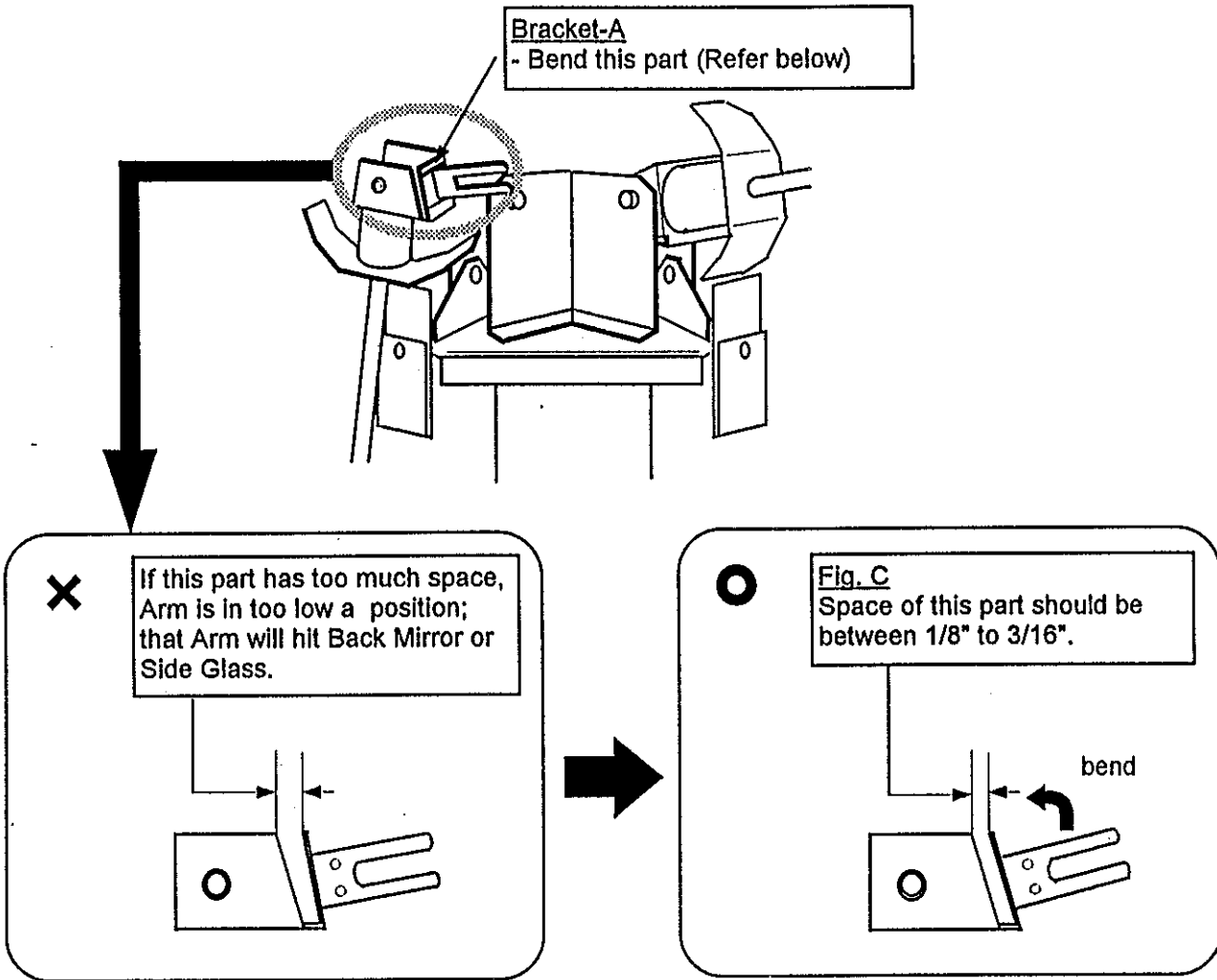


4) Locate the Arm which is hitting Glass. Slide out Cotter Pin and remove the Roll Pin from Arm to drop Arm Assy. (Do not remove spring)





5) Use Pliers to bend Bracket-A. Do NOT bend too much. (Refer Fig. C)



END